

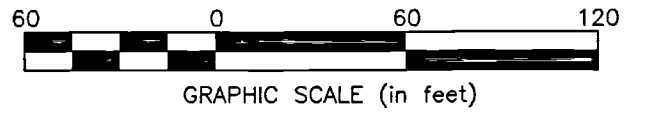
SURVEY OF ACREAGE PARCELS

SECTION 7, TOWNSHIP 5, RANGE 22 REFUGEE LANDS

CITY OF GRANDVIEW HEIGHTS, COUNTY OF FRANKLIN, STATE OF OHIO

- = STONE FND.
- = MON. FND.
- = I.P. FND.
- = I.P. SET
- = MAG. NAIL FND.
- = MAG. NAIL SET
- ▲ = R.R. SPK. FND.
- △ = R.R. SPK. SET
- ◆ = P.K. NAIL FND.

I.P. Set are 13/16" I.D. iron pipes
30" long with cap inscribed EMHT INC.

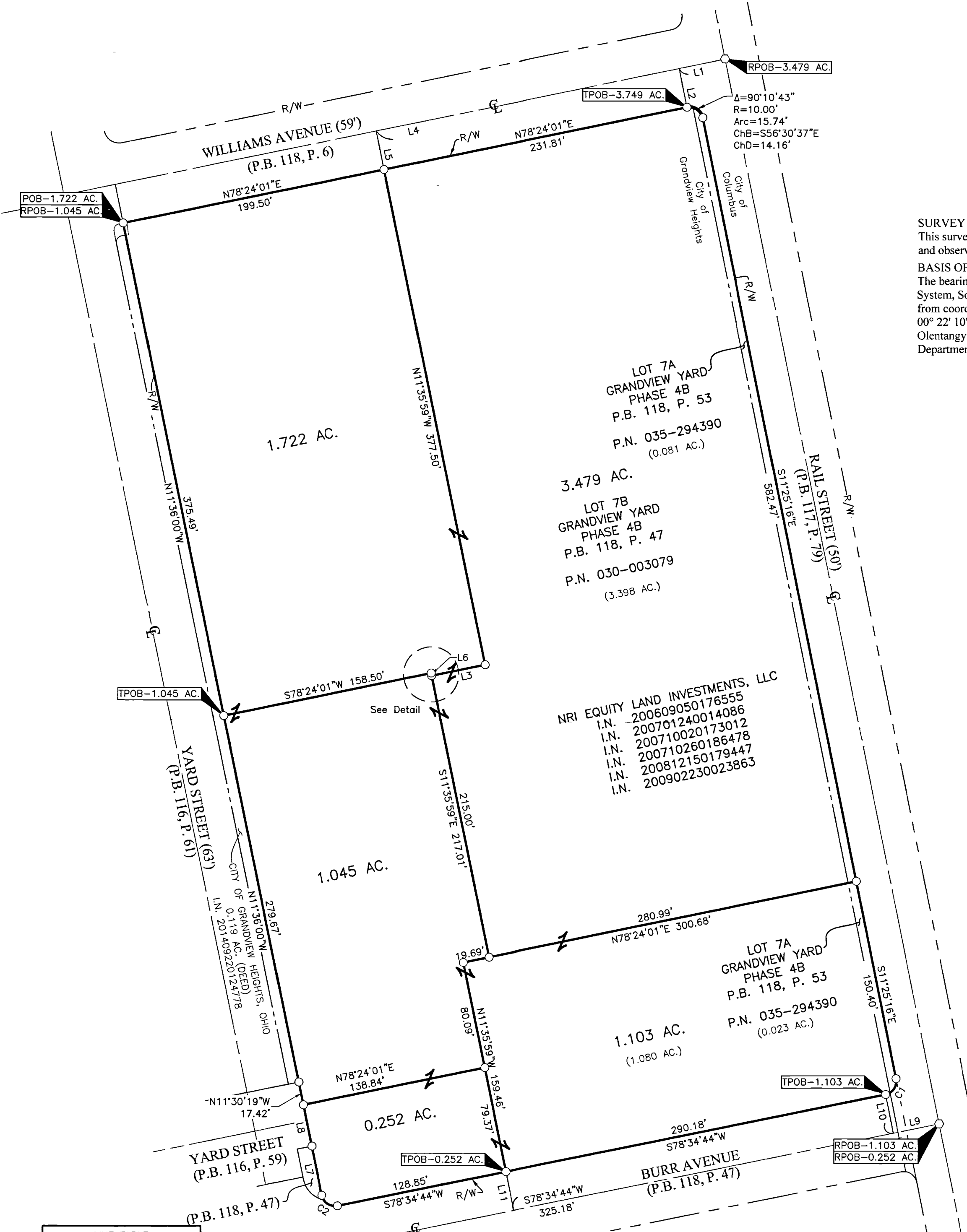
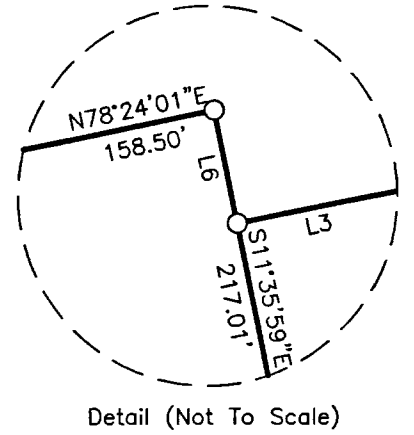


SURVEY NOTE:

This survey was prepared using documents of record, prior plats of survey, and observed evidence located by an actual field survey.

BASIS OF BEARINGS:

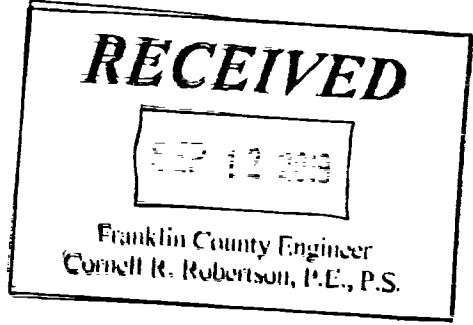
The bearings shown hereon are based on the Ohio State Plane Coordinate System, South Zone, NAD83 (1986 Adjustment). Control for bearings was from coordinates of monuments 5-83 and 4-83, having a bearing of North 00° 22' 10" West for a portion of the west limited access right-of-way of Olentangy River Road, established by the Franklin County Engineering Department using Global Positioning System procedures and equipment.



NRI EQUITY LAND INVESTMENTS, LLC
 I.N. 200609050176555
 I.N. 200701240014086
 I.N. 200710020173012
 I.N. 200710260186478
 I.N. 200812150179447
 I.N. 200902230023863

LINE	BEARING	DISTANCE
L1	S78°24'01"W	35.12'
L2	S11°35'59"E	29.50'
L3	N78°24'01"E	41.00'
L4	S78°24'01"W	266.93'
L5	S11°35'59"E	29.50'
L6	N11°35'59"W	2.01'
L7	N11°43'11"W	37.48'
L8	N11°30'19"W	31.49'
L9	N78°34'44"E	35.00'
L10	N11°25'16"W	29.50'
L11	N11°25'16"W	29.50'

CURVE	DELTA	RADIUS	ARC	CH. BEARING	CH. DIST.
C1	90°00'00"	10.00'	15.71'	S33°34'44"W	14.14'
C2	89°49'17"	10.00'	15.68'	N56°30'37"W	14.12'



By Matthew A. Kirk 10 SEP 19
 Matthew A. Kirk Date
 Professional Surveyor No. 7865

Evans, Mechwart, Hambleton & Tilton, Inc.
 Engineers • Surveyors • Planners • Scientists
 5500 New Albany Road, Columbus, OH 43054
 Phone: 614.775.4500 Toll Free: 888.775.3648
 emht.com

Date: September 10, 2019
 Scale: 1" = 60'
 Job No: 2019-0986
 Sheet: 1 of 1

REVISIONS		
MARK	DATE	DESCRIPTION

J:\20190986\DWG\DWG\20190986-VS-BNDY-01.DWG plotted by MASTON, JOHN on 9/10/2019 6:33:34 AM last saved by JAMSTON on 9/9/2019 2:15:46 PM
 PROJECT: 20190986-VS-BNDY-01; PLOT: 20190986-VS-BNDY-01; PLOT DATE: 9/10/2019 2:15:46 PM