

BEARING BASIS: OHIO STATE PLANE
 COORDINATE SYSTEM, SOUTH ZONE
 (3402), NAD 83, 2011 ADJUSTMENT. THE
 CENTERLINE OF LOCKBOURNE ROAD
 ESTABLISHED AS N03°53'29"E.

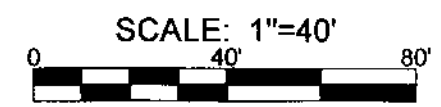
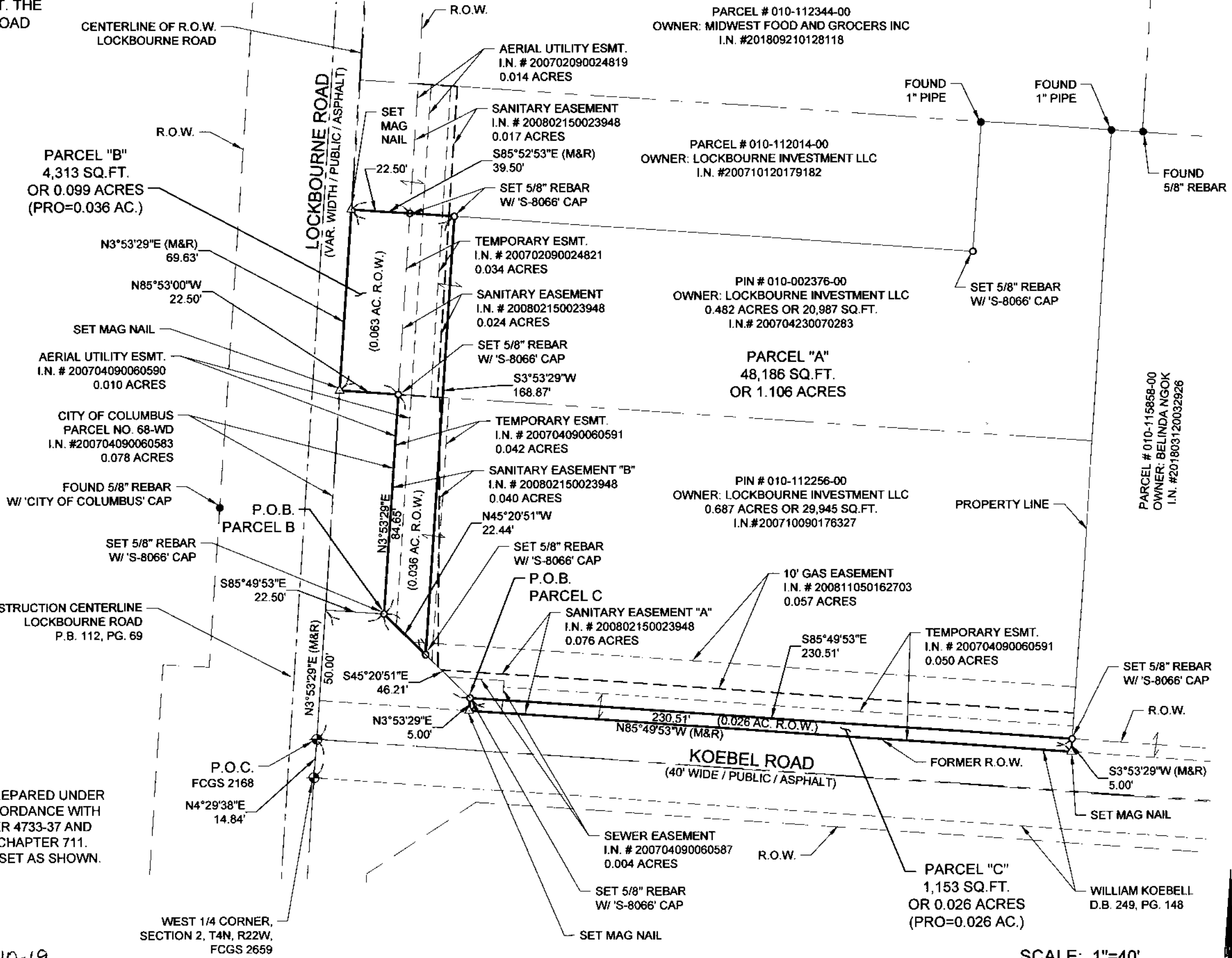
RECEIVED
 SEP 11 2019
 Franklin County Engineer
 Council R. Robertson, P.E., P.S.



I CERTIFY THAT THIS SURVEY WAS PREPARED UNDER
 MY DIRECT SUPERVISION AND IN ACCORDANCE WITH
 OHIO ADMINISTRATIVE CODE CHAPTER 4733-37 AND
 CONFORMS TO OHIO REVISED CODE CHAPTER 711.
 ALL MONUMENTATION IS OR WILL BE SET AS SHOWN.

Error of Closure is smaller than 1/20000

Matthew Mokanyk
 Matthew T. Mokanyk, P.S., P.E.
 Ohio P.S. No. S-8066
 9.10.19
 Date



PLANS PREPARED BY:
LANDTECH
 Professional Surveying
 & Engineering
 MI-OH-IA-IN-IL-PA-WI-MN-MO
 231-943-0050
 FAX: 231-943-0051
 www.towersurveyors.com
 1275 McGregor Way,
 Grawn, MI 49637

DRAWN BY:	CHECKED BY:
CEL	M.T.M.

REVISIONS				
DESCRIPTION	DATE	BY	CEL	CEL
PRELIMINARY DRAWINGS	05/22/19	CEL		
REVISIONS	07/24/19	CEL		
REVISIONS	08/20/19	CEL		

PART OF THE
 NORTHWEST 1/4 OF
 SECTION 2,
 TOWNSHIP 4 NORTH,
 RANGE 22 WEST,
 CONGRESS LANDS LYING
 EAST OF THE SCIOTO
 RIVER,
 CITY OF COLUMBUS,
 COUNTY OF FRANKLIN,
 STATE OF OHIO

LEGEND

- IRON FOUND
- SET 5/8" IRON REBAR W/ 'S-8066' CAP
- ⊕ MONUMENT FOUND
- (R) RECORD
- (M) MEASURED
- ▲ MAG NAIL FOUND
- △ MAG NAIL SET

SHEET NUMBER	JOB NO.
1 of 1	19444003