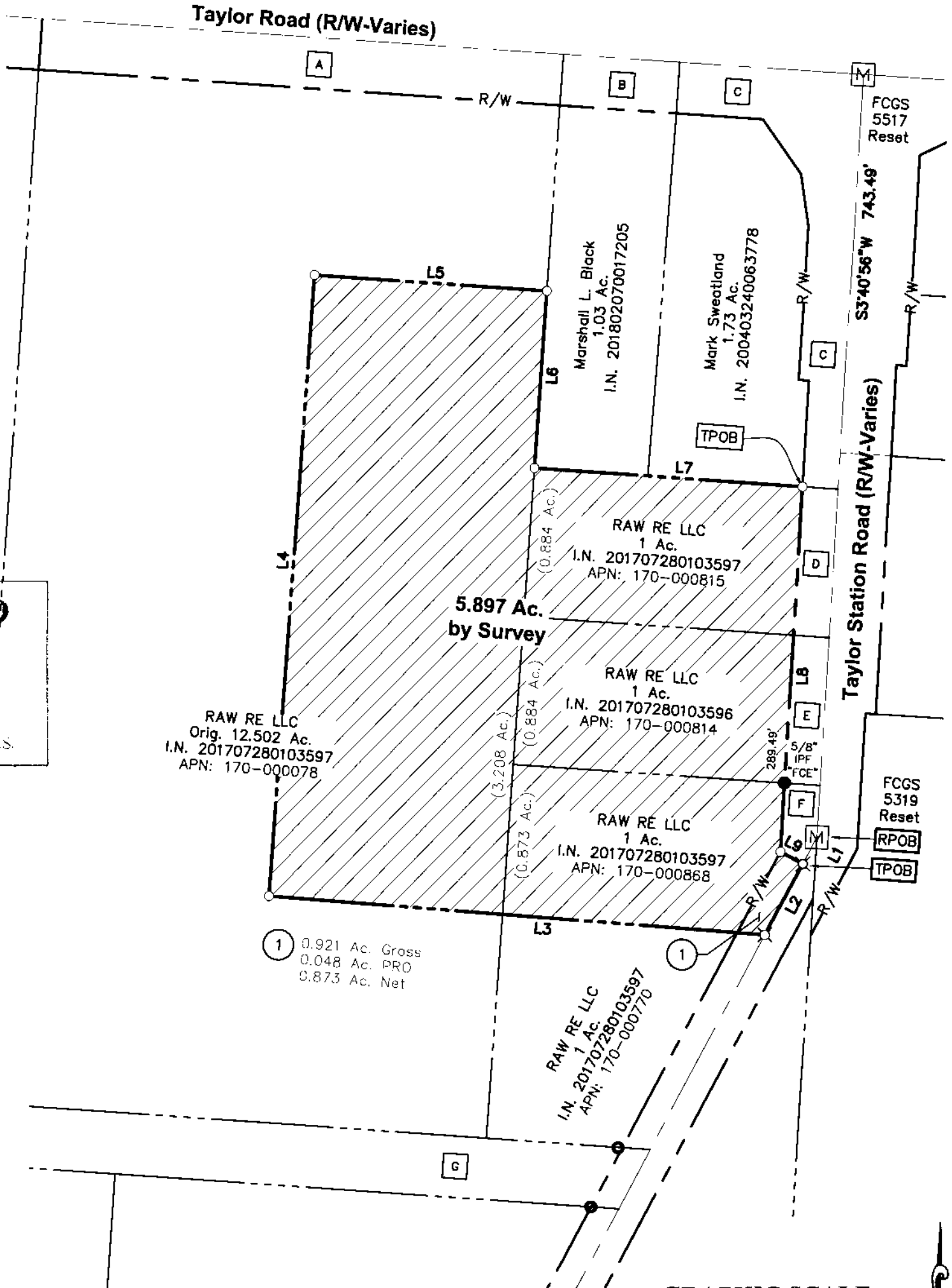


- A** Franklin County Commissioners
Parcel 19WD
0.590 Ac.
I.N. 200010170210598
- B** Franklin County Commissioners
Parcel 24WD
0.127 Ac.
I.N. 200103190054631
- C** Franklin County Commissioners
Parcel 22WD
0.590 Ac.
I.N. 200106150135180
- D** Franklin County Commissioners
Parcel 4WD
0.117 Ac.
I.N. 200010170210595
- E** Franklin County Commissioners
Parcel 20WD
0.116 Ac.
I.N. 200010170210597
- F** Franklin County Commissioners
Parcel 5WD
0.056 Ac.
I.N. 200012080248238
- G** City of Gahanna
I.N. 201301020000607
2.978 Ac.

Parcel Exhibit ~ 5.897 Ac.
Jefferson Township, Franklin County, Ohio
Range 16, Township 1, Quarter Township 3,
United States Military District

Legend

- Iron Rod Found
- Iron Pipe Found
- ✕ PK Nail Found
- ◻ M FCGS Monument Found
- Iron Pin Set
- ✕ PK Nail Set
- △ RR Spike Set

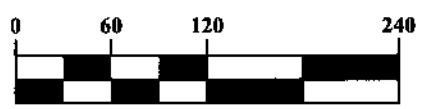


RECEIVED
SEP 05 2019
Franklin County Engineer
Candell S. Robinson, P.E., P.S.

LINE TABLE		
LINE	BEARING	DISTANCE
L1	S28°17'06"W	29.47'
L2	S28°17'06"W	78.55'
L3	N85°25'27"W	489.16'
L4	N04°22'10"E	607.20'
L5	S85°52'01"E	229.02'
L6	S04°13'33"W	172.59'
L7	S85°52'01"E	264.42'
L8	S03°40'56"W	356.49'
L9	S61°42'54"E	25.00'

① 0.921 Ac. Gross
0.048 Ac. PRO
0.873 Ac. Net

GRAPHIC SCALE



This drawing is based on existing Auditor's and Recorder's records and an actual field survey by Advanced Civil Design, Inc. in July of 2019.


All iron pins set are 5/8" diameter rebar, 30" long with a plastic cap inscribed "Advanced 7661".

Bearings are based on the bearing of N28°17'06"E for the centerline of Taylor Road between Franklin County Geodetic Survey monuments 5343 and 5319 (Ohio State Plane Coordinate System, South Zone, NAD83, NSRS 2007) as established using a GPS survey.

ADVANCED CIVIL DESIGN, INC.

Jonathan E. Phelps 9/3/19
Jonathan E. Phelps Date:
Professional Surveyor No. 8241

DRAWN BY: DRB JOB NO.: 18-0027-114
DATE: 08/12/2019 CHECKED BY: BCK


ADVANCED CIVIL DESIGN
ENGINEERS SURVEYORS

422 Beecher Road
Gahanna, Ohio 43230
ph 614.428.7750
fax 614.428.7755