



Evans, Mechwart, Hambleton & Tilton, Inc.
Engineers • Surveyors • Planners • Scientists
5500 New Albany Road, Columbus, OH 43054
Phone: 614.775.4500 Toll Free: 888.775.3648
emht.com

SURVEY OF ACREAGE PARCEL

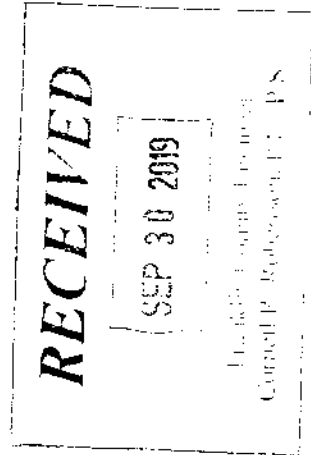
SECTION 8, QUARTER TOWNSHIP 1, TOWNSHIP 2, RANGE 16
UNITED STATES MILITARY DISTRICT
CITY OF NEW ALBANY, COUNTY OF FRANKLIN, STATE OF OHIO

Date: September 24, 2019
Scale: 1" = 100'
Job No: 2019-0736

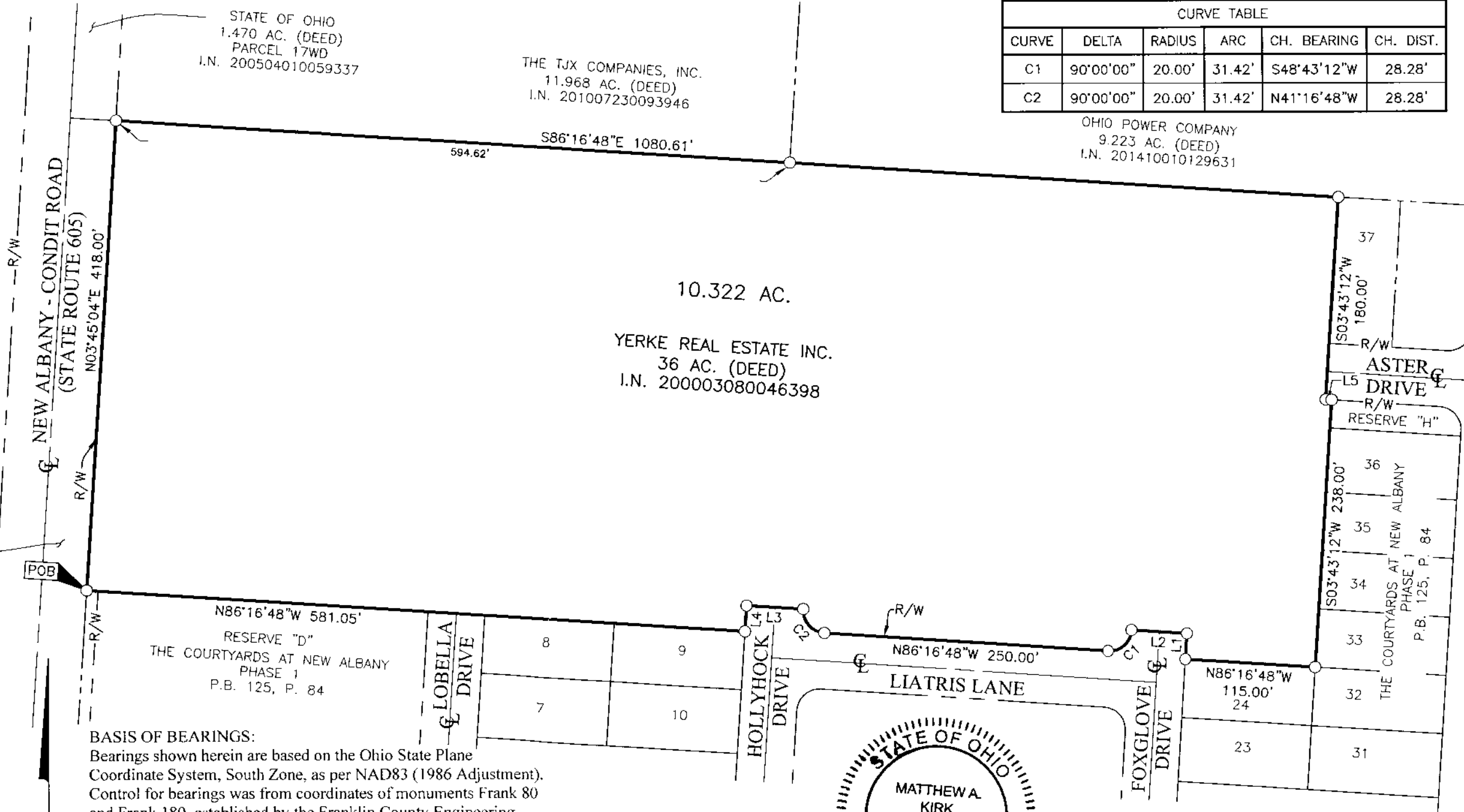
LINE TABLE		
LINE	BEARING	DISTANCE
L1	N03°43'12"E	23.00'
L2	N86°16'48"W	50.00'
L3	N86°16'48"W	50.00'
L4	S03°43'12"W	23.00'
L5	S86°16'48"E	5.22'

CURVE TABLE					
CURVE	DELTA	RADIUS	ARC	CH. BEARING	CH. DIST.
C1	90°00'00"	20.00'	31.42'	S48°43'12"W	28.28'
C2	90°00'00"	20.00'	31.42'	N41°16'48"W	28.28'

OHIO POWER COMPANY
9.223 AC. (DEED)
I.N. 201410010129631

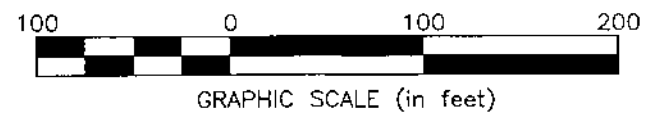


STATE OF OHIO
1.008 AC. (DEED)
PARCEL 8WD
I.N. 2006051800096906
I.N. 2006050500086197



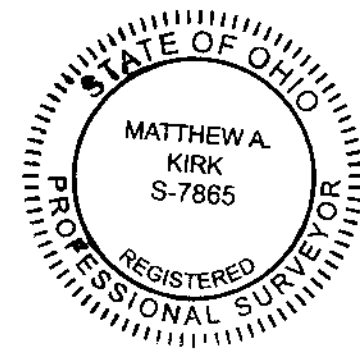
- = STONE FND.
- = MON. FND.
- = I.P. FND.
- = I.P. SET
- = MAG. NAIL FND.
- = MAG. NAIL SET
- ▲ = R.R. SPK. FND.
- △ = R.R. SPK. SET
- = P.K. NAIL FND.

I.P. Set are 13/16" I.D. iron pipes
30" long with cap inscribed EMHT INC.



BASIS OF BEARINGS:
Bearings shown herein are based on the Ohio State Plane Coordinate System, South Zone, as per NAD83 (1986 Adjustment). Control for bearings was from coordinates of monuments Frank 80 and Frank 180, established by the Franklin County Engineering Department, using Global Positioning System procedures and equipment, giving a bearing of North 03° 45' 04" East for a portion of the centerline of New Albany Condit Road.

SURVEY NOTE:
This survey was prepared using documents of record, prior plats of survey, and observed evidence located by an actual field survey performed in November, 2017.



By Matthew A. Kirk 24 SEP 19
Matthew A. Kirk
Professional Surveyor No. 7865
Date

J:\20190736\DWG\04SHEETS\BOUNDARY\20190736-VS-BNDY-01.DWG plotted by YOUSSEF, SHERRI on 9/24/2019 10:19:36 AM last saved by YOUSSEF on 9/24/2019 10:19:31 AM
Xref: 20171086-VS-BNDY-02.DWG & 20171086-VS-PLAT-PHS1.DWG