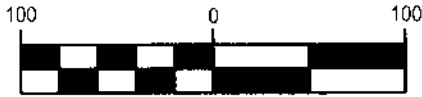


# RIGHT-OF-WAY DESCRIPTION EXHIBIT

STATE OF OHIO, COUNTY OF FRANKLIN, CITY OF COLUMBUS,  
SECTION 4, TOWNSHIP 1, RANGE 16,  
UNITED STATES MILITARY LANDS



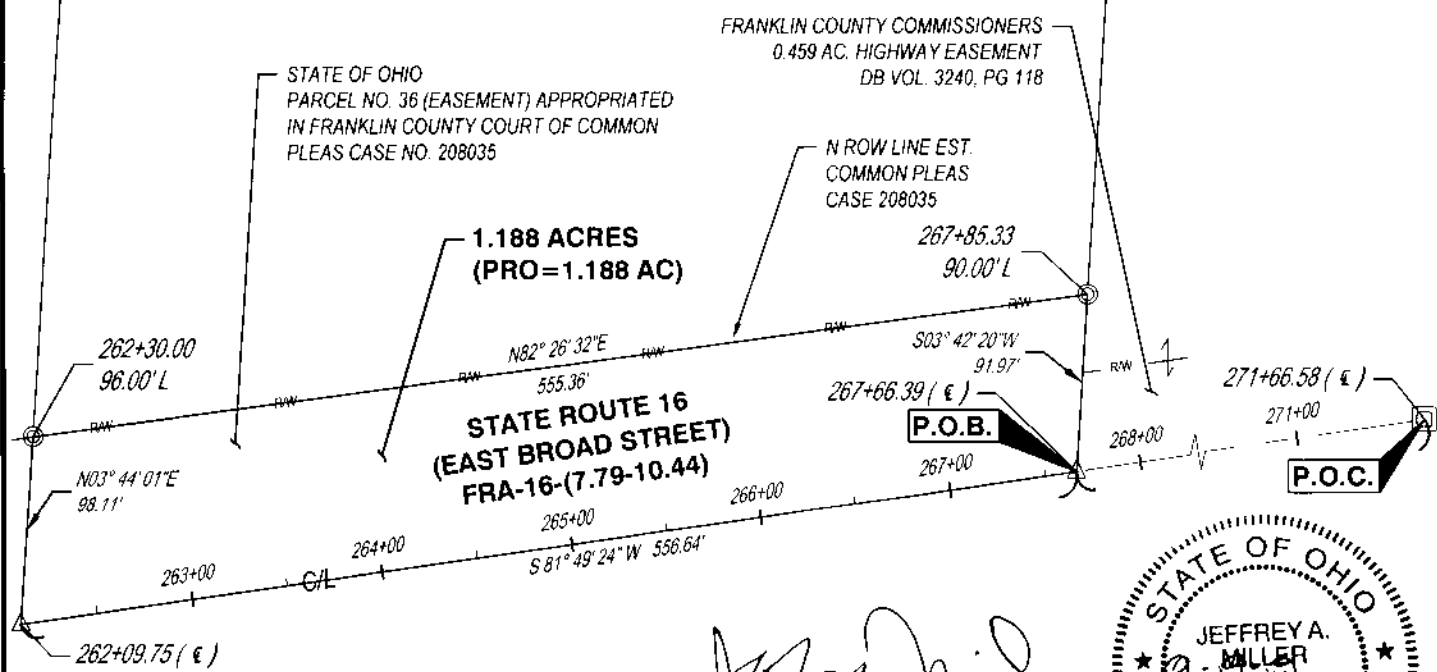
GRAPHIC SCALE (IN FEET)

**RECORDED**  
SEP 20 2019  
Franklin County Engineer  
Cornell R. Robertson, P.L., P.S.

IFIF LLC  
IN. 201506260086128

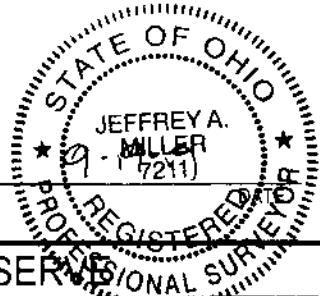
ROBERT L. ALTHOFF &  
LYNN ALTHOFF  
O.R. VOL. 26184, PG. 109

RICHMOND RESERVE LLC  
IN. \_\_\_\_\_  
10.012 ACRES



- MONUMENT LEGEND**
- ☐ MONUMENT BOX FOUND
  - ⊙ ROW MONUMENT FOUND
  - △ MAG NAIL SET
- BASIS OF BEARING**
- THE BEARINGS SHOWN ON THIS SURVEY ARE BASED ON OHIO STATE PLANE COORDINATE SYSTEM, SOUTH ZONE, AND THE NORTH AMERICAN DATUM OF 1983, WITH TIES TO FRANKLIN COUNTY ENGINEER MONUMENTS FCGS 5011 AND FCGS 1276 RESET HAVING A RELATIVE BEARING OF NORTH 04 DEGREES 17 MINUTES 49 SECONDS EAST. FIELD WORK WAS PERFORMED AUGUST OF 2019.

JEFFREY A. MILLER, OHIO PS NO 7211  
jeff.miller@cesoinc.com



<b>RICHMOND RESERVE</b>	
<b>1.188 AC RIGHT OF WAY DESCRIPTION EXHIBIT</b>	
CITY OF COLUMBUS	FRANKLIN COUNTY, OHIO
SCALE: 1"=100'	DATE: 09/19/2019
DESIGN: N/A	JOB NO.: 757006
DRAWN: RAK	SHEET NO.:
CHECKED: AWW	<b>CESO</b> WWW.CESOINC.COM
	1 OF 1