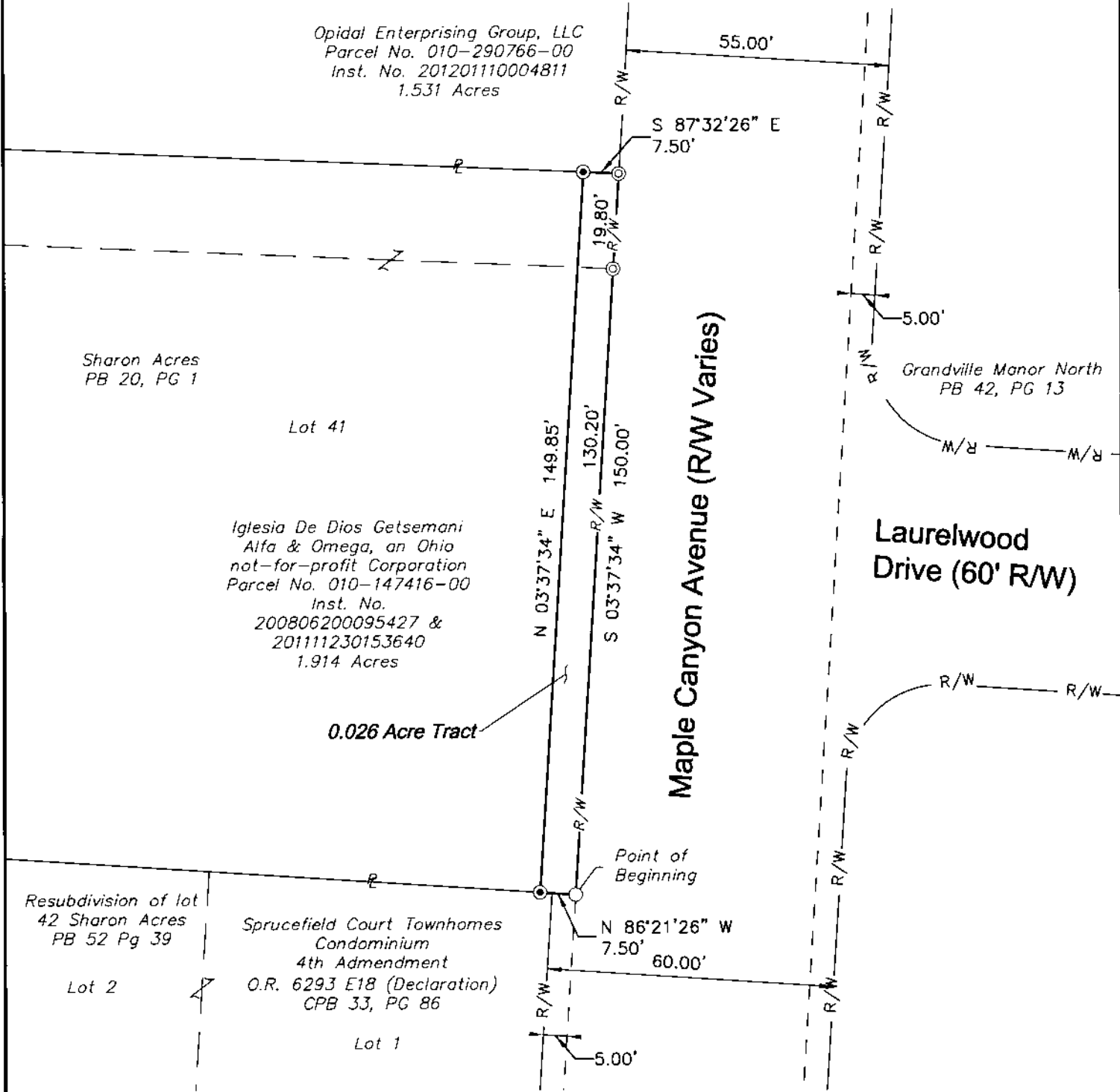


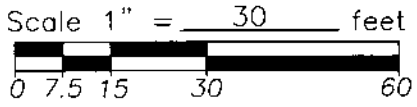


Korda/Nemeth Engineering, Inc - Consulting Engineers
1650 Watermark Drive, Suite 200 - Columbus, Ohio 43215-7010
TEL: 614-487-1650 FAX: 614-487-8981 WEB: www.korda.com

PLAT OF SURVEY
BEING PART OF LOT 41 OF SHARON ACRES SUBDIVISION AS RECORDED IN PLAT BOOK 20, PAGE 1, AND PART OF A 1.914 ACRE TRACT CONVEYED TO IGLESIA DE DIOS GETSEMANI ALFA & OMEGA, AN OHIO NOT-FOR-PROFIT CORPORATION BY INSTRUMENT NUMBERS 200806200095427 AND 201111230153640, IN THE CITY OF COLUMBUS, COUNTY OF FRANKLIN, STATE OF OHIO.



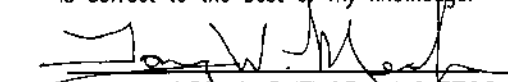
Basis of Bearings: The bearings shown upon this plat are based on the westerly right of way line of Maple Canyon Avenue being South 03° 37' 34" West as referenced to the Ohio State Plane Coordinate System, South Zone, NAD83 (2011 NSRS Adjustment).



LEGEND:

- ⊙ - 5/8"x30" Iron pin set
- - 3/4" Iron pipe fld.
- ⊙ - 5/8" Iron pin found

Certification:
I hereby certify that this plat is a true and correct representation of a survey performed under my responsible direction and supervision and is correct to the best of my knowledge.


REGISTERED SURVEYOR NO. 7799

12/12/19
DATE

