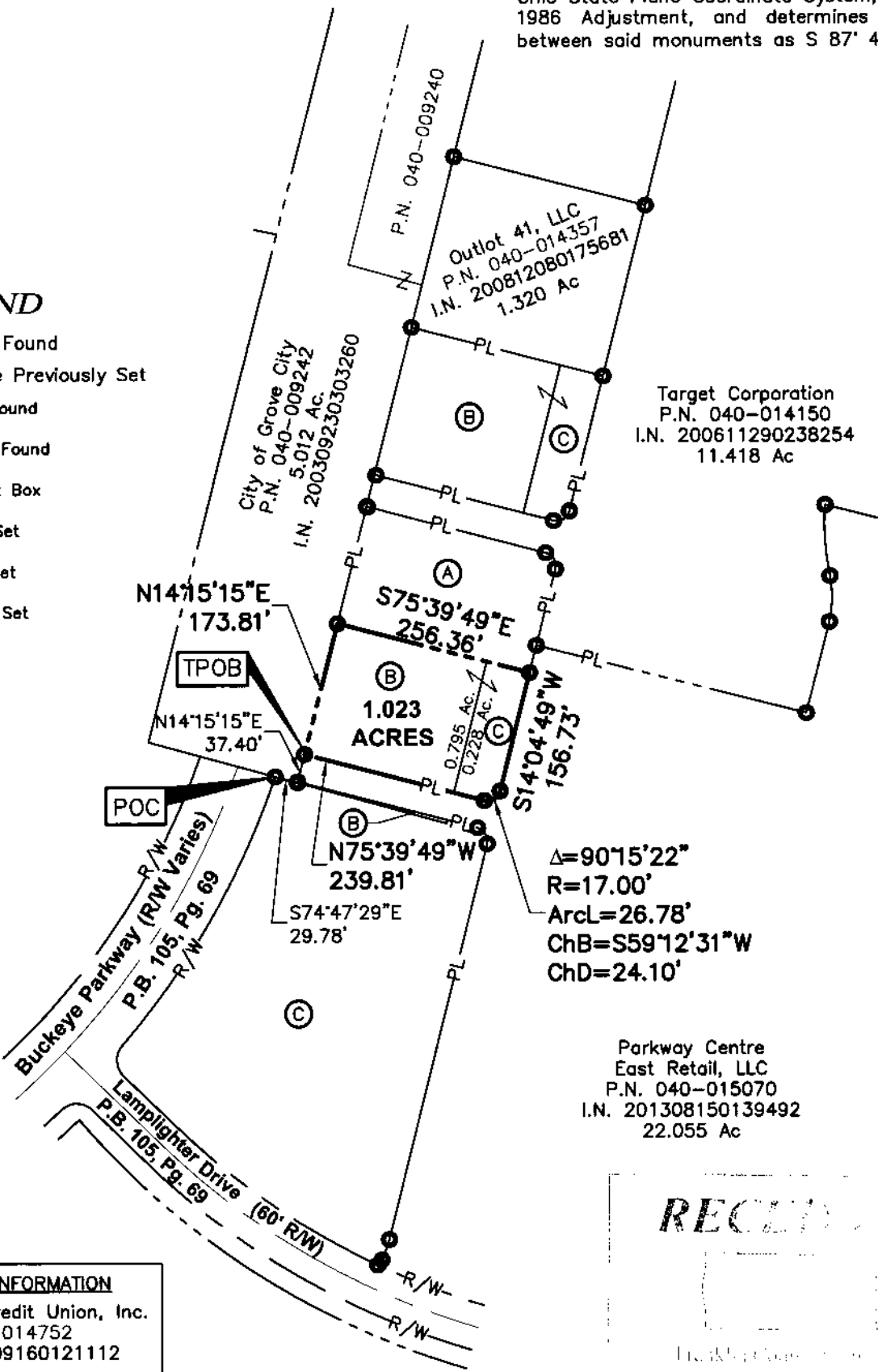


1.023 Acre Exhibit
 VIRGINIA MILITARY DISTRICT 469
 GROVE CITY, FRANKLIN COUNTY, OHIO

Bearings were transferred from a GPS survey of Franklin County Monuments "Frank 25" and "Frank 125" performed by the Franklin County Engineer's Office, and is based upon the NAD83 Ohio State Plane Coordinate System, South Zone, 1986 Adjustment, and determines the bearing between said monuments as S 87° 46' 00" E.

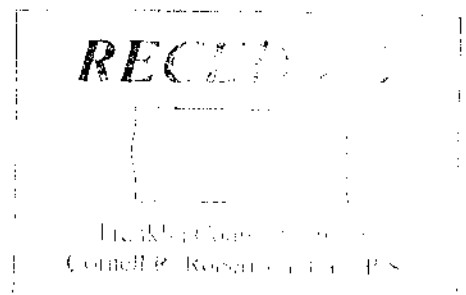
LEGEND

- Iron Pin Found
- Iron Pipe Previously Set
- ✕ MagNail Found
- ▲ RR Spike Found
- Ⓜ Monument Box
- Iron Pin Set
- ✕ MagNail Set
- △ RR Spike Set

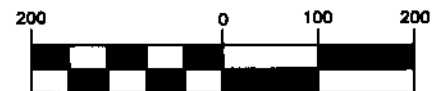


Target Corporation
 P.N. 040-014150
 I.N. 200611290238254
 11.418 Ac

Parkway Centre
 East Retail, LLC
 P.N. 040-015070
 I.N. 201308150139492
 22.055 Ac



GRAPHIC SCALE



(IN FEET)

1 inch = 200 ft.

OWNERSHIP INFORMATION	
Ⓐ	TelOhio Credit Union, Inc. P.N. 040-014752 I.N. 201009160121112 0.906 Ac
Ⓑ	Parkway Centre East, LLC P.N. 040-012668 I.N. 200511160242015 4.732 Ac (remainder)
Ⓒ	Parkway Centre East, LLC P.N. 040-012668 I.N. 200509290203973 37.012 Ac (remainder)

All iron pins set are 3/4" diameter, 30" long iron pipe with plastic cap inscribed "Advanced 7661".

This Survey is based on existing records from Franklin County, and from actual field survey work.

ADVANCED CIVIL DESIGN, INC.
Jonathan E. Phelps
 Jonathan E. Phelps Date
 Reg. No. 8241

DRAWN BY: JEP JOB NO.: 19-0080-11
 DATE: 11/01/2019 CHECKED BY: JEP



ADVANCED CIVIL DESIGN
 ENGINEERS SURVEYORS

422 Beecher Road
 Gahanna, Ohio 43230
 ph 614.428.7750
 fax 614.428.7755