

Right-of-Way Drops 0.064 Ac. & 0.074 Ac.

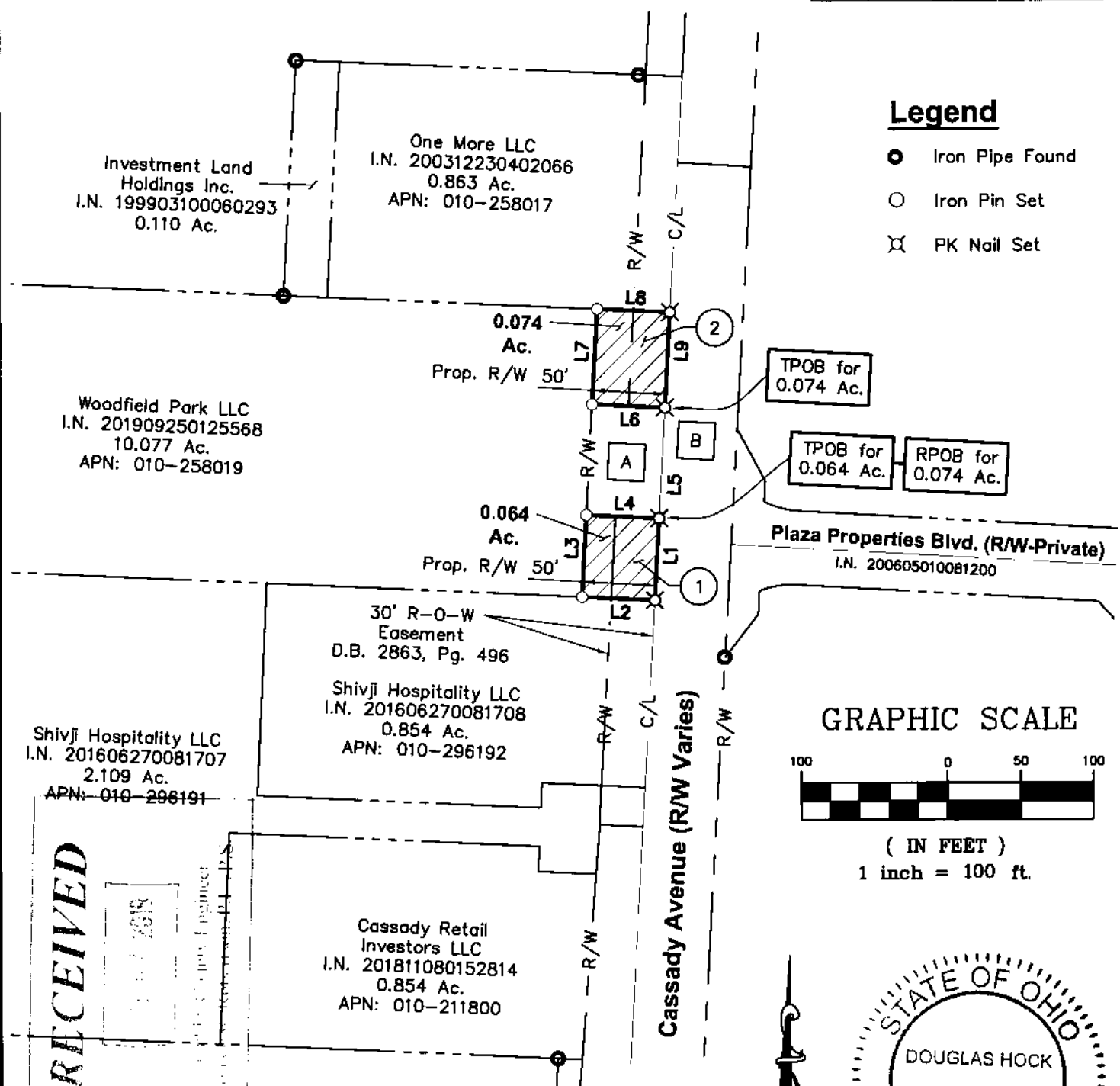
City of Columbus, Franklin County, Ohio
Quarter Township 3, Township 1, Range 17,
United States Military District

LINE TABLE		
LINE	BEARING	DISTANCE
L1	S03°09'45"W	55.70'
L2	N87°20'19"W	50.00'
L3	N03°09'45"E	55.70'
L4	S87°20'19"E	50.00'
L5	N03°09'45"E	75.23'
L6	N87°20'19"W	50.00'
L7	N03°09'45"E	64.89'
L8	S87°20'19"E	50.00'
L9	S03°09'45"W	64.89'

- | | | | |
|---|---|---|---|
| A | City of Columbus, Ohio
I.N. 200903100033148
0.086 Ac. | 1 | 0.064 Ac. Gross
0.038 Ac. PRO
0.026 Ac. Net |
| B | City of Columbus, Ohio
I.N. 200407140163519
1.385 Ac. | 2 | 0.074 Ac. Gross
0.037 Ac. PRO
0.037 Ac. Net |

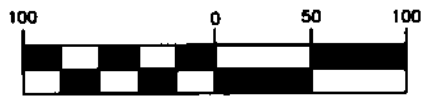
Legend

- Iron Pipe Found
- Iron Pin Set
- ⊗ PK Nail Set

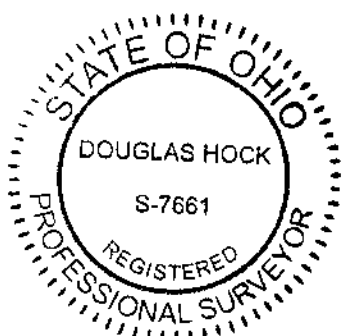


Plaza Properties Blvd. (R/W-Private)
I.N. 200605010081200

GRAPHIC SCALE



(IN FEET)
1 inch = 100 ft.



RECEIVED

This survey is based on existing records from Franklin County Auditor's and Recorder's Office and an actual field survey in May of 2019.


All iron pins set are 5/8" diameter, 30" long rebar with plastic cap inscribed "Advanced 7661".

Bearings are based on the Ohio State Plane Coordinate System, South Zone, NAD83 (NSRS2007). Said bearings were derived from GPS observation.

ADVANCED CIVIL DESIGN, INC.

Douglas R. Hock, P.S. 7661
Date: 10/7/19

DRAWN BY: DRB JOB NO.: 17-0155-128
DATE: 10/04/2019 CHECKED BY: BCK



ADVANCED
CIVIL DESIGN
ENGINEERS SURVEYORS

422 Beecher Road
Gahanna, Ohio 43230
ph 614.428.7750
fax 614.428.7755