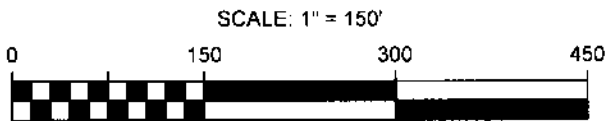


RECEIVED

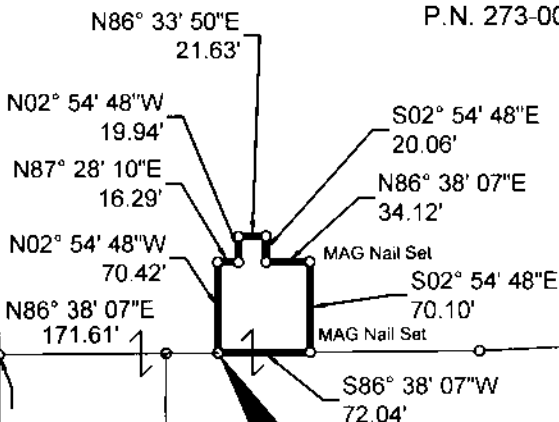
Franklin County Engineer

P-3-D



GRAPHIC SCALE

DISCOVERY MC INVESTMENTS, LLC  
15.513 AC.  
INSTR. 201706270087293  
P.N. 273-000309



TRUE PLACE OF BEGIN FOR A 0.126 AC. TRACT

7001 DISCOVERY BLVD., LLC  
9.160 AC.  
INSTR. 201808130108315  
P.N. 273-012898

CITY OF DUBLIN  
0.173 AC.  
INSTR. 199811200299248

NOW KNOWN AS HOLT DRIVE (ORD. NO. 21-04)

WILCOX ROAD ~ 60' (P.B. 85, PGS. 51-53)

DISCOVERY BLVD. (P.B. 66, PGS. 97)

WALL STREET ~ 60' (P.B. 72, PGS. 79-80)

DISCOVERY BLVD. ~ 60' (P.B. 72, PGS. 79 & 80)

PROPOSED 0.985 AC. TRACT

591.49' N02° 56' 07" W

N16° 41' 06" E 89.34'

PERIMETER DRIVE ~ VARIABLE WIDTH

(P.B. 72, PGS. 79 & 80)

REF. POB

P.K. Nail Found

BASIS OF BEARINGS: Basis of bearings is the centerline of Wilcox Road, being N 02° 56' 07" W, as shown upon the plat of Post Road, Wilcox Road, Perimeter Drive & Easements Dedication Plat, of record in Plat Book 85, Pages 51-53, Recorder's Office, Franklin County, Ohio and all other bearings are based upon this meridian.

3/4" I.D. Iron Pipe Set or Previously Set, 30" in length, w/Cap Stamped "BIRD & BULL, INC." Unless Otherwise Shown.

EXHIBIT OF A 0.126 ACRE TRACT,  
AT 7001 DISCOVERY BOULEVARD,  
CITY OF DUBLIN, FRANKLIN CO., OHIO  
(IN VIRGINIA MILITARY SURVEY NO. 2999)

SCALE: 1" = 150'

OCTOBER 04, 2019

3500 Snuffer Road, Ste. 225  
Columbus, Ohio 43235  
Ph: (614) 761-1661

By

*Kevin L. Baxter*

Kevin L. Baxter ~ Ohio Surveyor No. 7697

