



Evans, Mechwart, Hambleton & Tilton, Inc.
 Engineers • Surveyors • Planners • Scientists
 5500 New Albany Road, Columbus, OH 43054
 Phone: 614.775.4500 Toll Free: 888.775.3648
 emht.com

SURVEY OF ACREAGE PARCEL

VIRGINIA MILITARY DISTRICT SURVEY NO. 6115

CITY OF GROVE CITY, COUNTY OF FRANKLIN, STATE OF OHIO

Date: November 11, 2019

Job No: 2019-0225

Scale: 1" = 50'

BASIS OF BEARINGS:

Bearings are based on the Ohio State Plane Coordinate System, South Zone, per NAD83 (1986 Adjustment). Control for bearings was from coordinates of monuments FCGS 5548 & FCGS 5539, having a bearing of North 00°21'40" East for a portion of the centerline of Hoover Road, established by the Franklin County Engineering Department.

SURVEY NOTE:

This survey was prepared using documents of record, prior plats of survey, and observed evidence located by an actual field survey in April 2019.

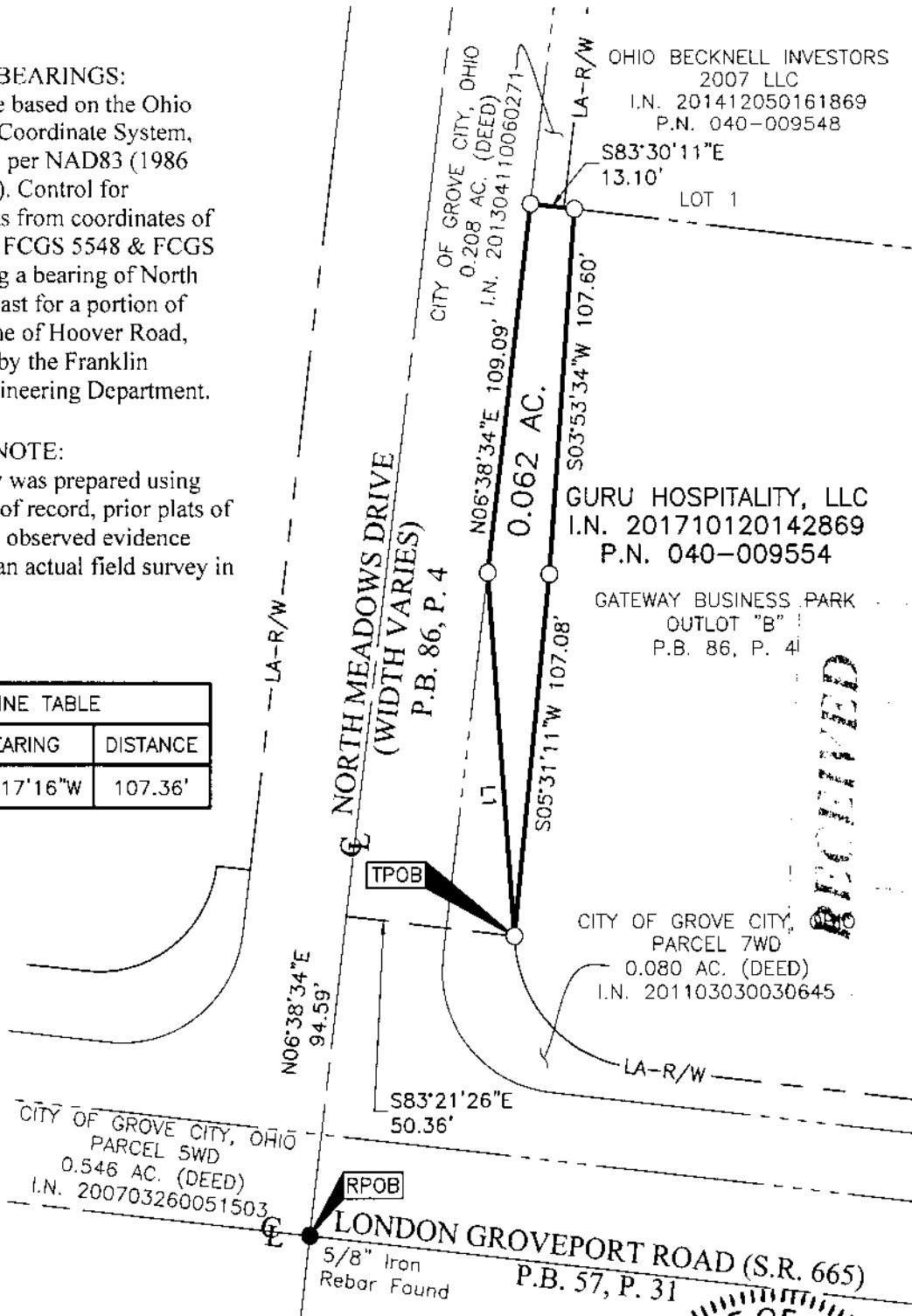
LINE TABLE		
LINE	BEARING	DISTANCE
L1	N04°17'16"W	107.36'

J:\20190225\DWG\04SHEETS\BOUNDARY\20190225-VS-BNDY-04.DWG plotted by DIROMA, THERESA on 11/11/2019 9:12:30 AM last saved by DIROMA, THERESA on 11/11/2019 9:12:17 AM
 Arefs:

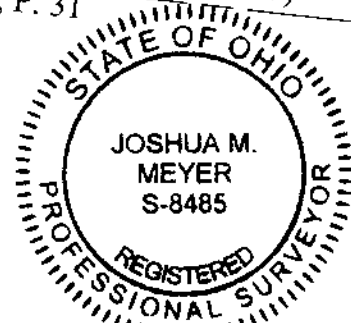
● = I.P. FND.
 ○ = I.P. SET
 I.P. Set are 13/16" I.D. iron pipes
 30" long with cap inscribed EMHT INC.

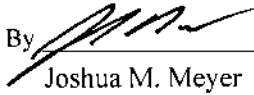


GRAPHIC SCALE (in feet)



RECEIVED



By  Date **11-11-2019**
 Joshua M. Meyer
 Professional Surveyor No. 8485