

H-4-D



Evans, Mechwart, Hambleton & Tillon, Inc.
Engineers • Surveyors • Planners • Scientists
5500 New Albany Road, Columbus, OH 43054
Phone: 614.775.4500 Toll Free: 888.775.3648
emht.com

SURVEY OF ACREAGE PARCEL

VIRGINIA MILITARY DISTRICT SURVEY NO. 6115
CITY OF GROVE CITY, COUNTY OF FRANKLIN, STATE OF OHIO

Date: November 11, 2019

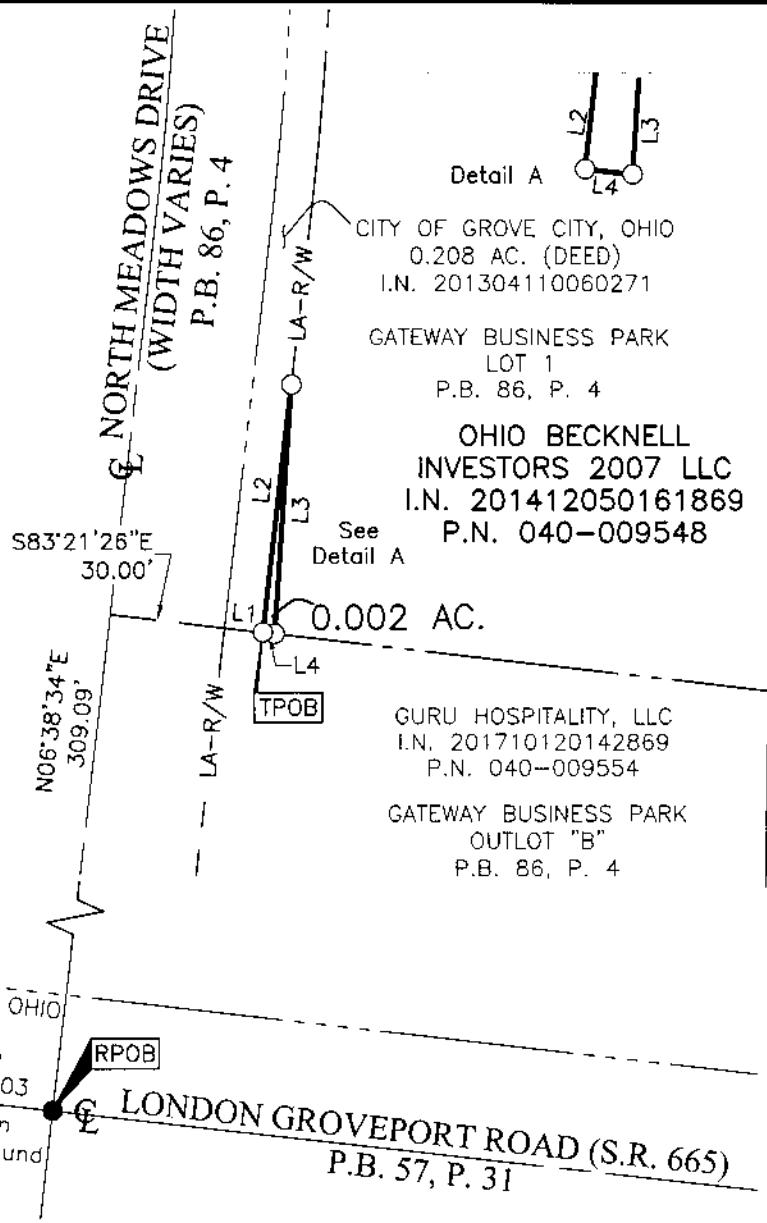
Job No: 2019-0225

Scale: 1" = 50'

LINE TABLE		
LINE	BEARING	DISTANCE
L1	S83°30'11"E	10.00'
L2	N06°38'34"E	64.47'
L3	S03°53'34"W	64.54'
L4	N83°30'11"W	3.10'

BASIS OF BEARINGS:
Bearings are based on the Ohio State Plane Coordinate System, South Zone, per NAD83 (1986 Adjustment). Control for bearings was from coordinates of monuments FCGS 5548 & FCGS 5539, having a bearing of North 00°21'40" East for a portion of the centerline of Hoover Road, established by the Franklin County Engineering Department.

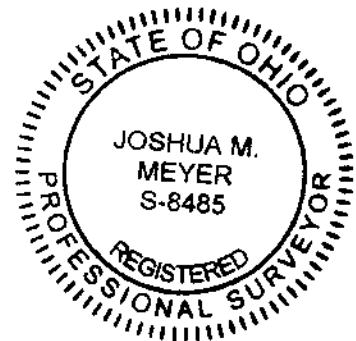
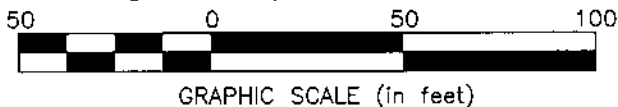
J:\20190225\DWG\04SHEETS\BOUNDARY\20190225-VS-BNDY-05.DWG plotted by DIROMA, THERESA on 11/11/2019 10:14:53 AM last saved by DIROMA, THERESA on 11/11/2019 10:14:39 AM



SURVEY NOTE:
This survey was prepared using documents of record, prior plats of survey, and observed evidence located by an actual field survey in April 2019.

- = I.P. FND.
- = I.P. SET

I.P. Set are 13/16" I.D. iron pipes 30" long with cap inscribed EMHT INC.



RECEIVED

By Joshua M. Meyer
Professional Surveyor No. 8485

11-11-2019
Date

Franklin County Engineering Department