

F.S.P



Evans, Mechwart, Hambleton & Tilton, Inc.
Engineers • Surveyors • Planners • Scientists
5500 New Albany Road, Columbus, OH 43054
Phone: 614.775.4500 Toll Free: 888.775.3648
emht.com

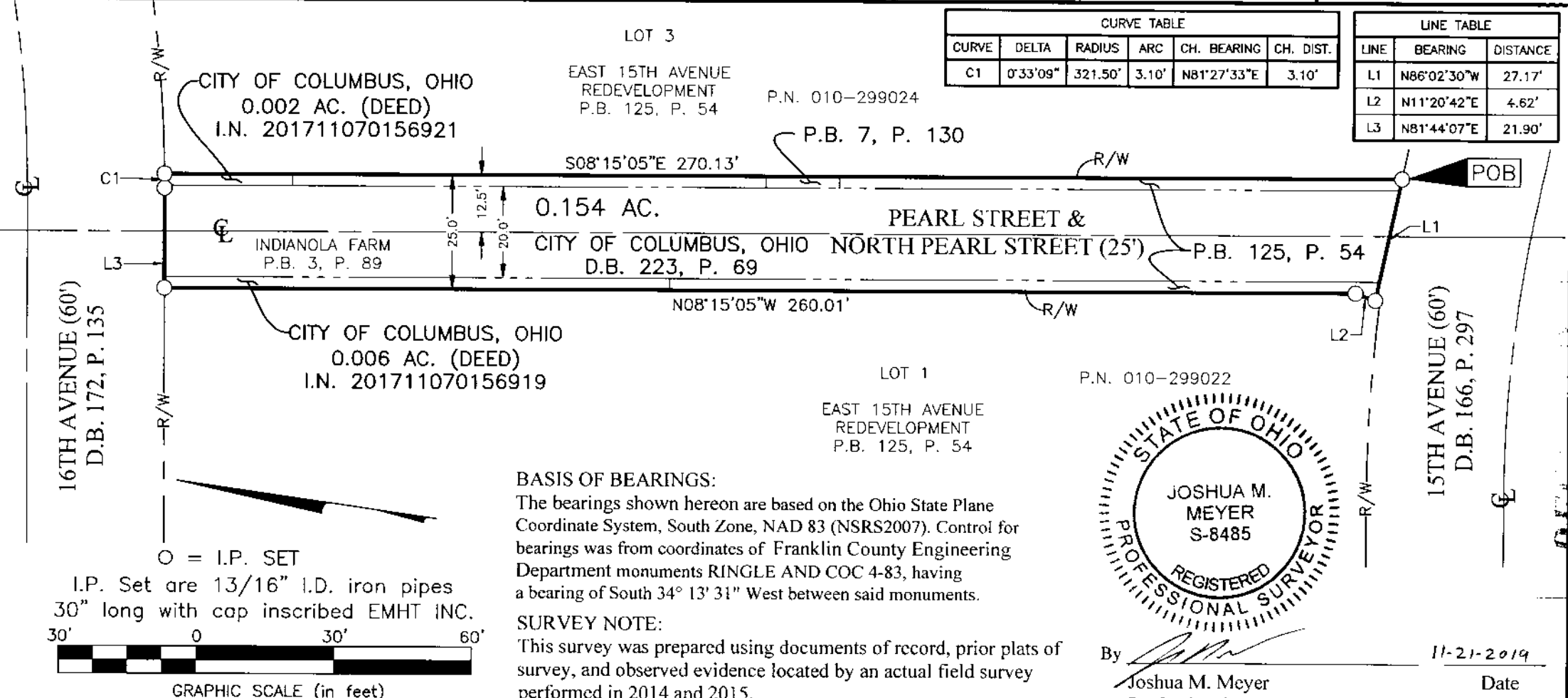
SURVEY OF ACREAGE PARCEL

QUARTER TOWNSHIP 3, TOWNSHIP 1, RANGE 18
UNITED STATES MILITARY DISTRICT
CITY OF COLUMBUS, COUNTY OF FRANKLIN, STATE OF OHIO

Date: November 21, 2019
Scale: 1" = 30'
Job No: 2019-1182

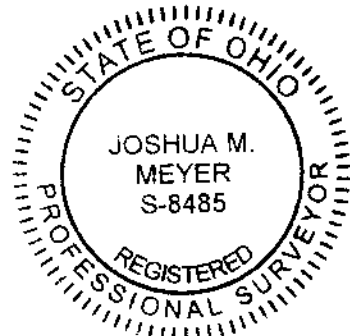
CURVE TABLE					
CURVE	DELTA	RADIUS	ARC	CH. BEARING	CH. DIST.
C1	0°33'09"	321.50'	3.10'	N81°27'33"E	3.10'

LINE TABLE		
LINE	BEARING	DISTANCE
L1	N86°02'30"W	27.17'
L2	N11°20'42"E	4.62'
L3	N81°44'07"E	21.90'



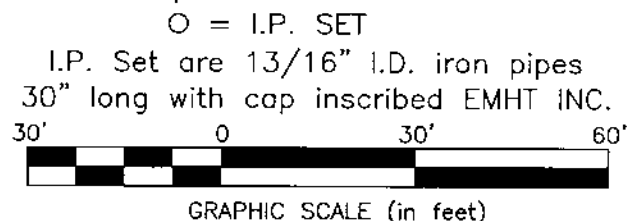
BASIS OF BEARINGS:
The bearings shown hereon are based on the Ohio State Plane Coordinate System, South Zone, NAD 83 (NSRS2007). Control for bearings was from coordinates of Franklin County Engineering Department monuments RINGLE AND COC 4-83, having a bearing of South 34° 13' 31" West between said monuments.

SURVEY NOTE:
This survey was prepared using documents of record, prior plats of survey, and observed evidence located by an actual field survey performed in 2014 and 2015.



By *Joshua M. Meyer*
Joshua M. Meyer
Professional Surveyor No. 8485

11-21-2019
Date



J:\20191182\DWG\04SHEETS\BOUNDARY\20191182-VS-BNDY-RWAY-VACT-01.DWG plotted by GEIGER, STEVEN on 11/21/2019 11:58:15 AM last saved by SGEIGER on 11/21/2019 11:58:07 AM Xrefs: