

**SURVEY EXHIBIT OF PROPOSED
0.040 ACRE RIGHT OF WAY DROP
PART OF LAND OF OPRS COMMUNITIES
CITY OF COLUMBUS, COUNTY OF FRANKLIN, STATE OF OHIO
LOT 1 OF A RESUBDIVISION OF WESTMINSTER THURBER AND
VACATION OF PART OF THURBER DRIVE EAST**

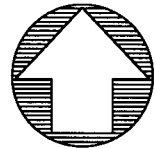
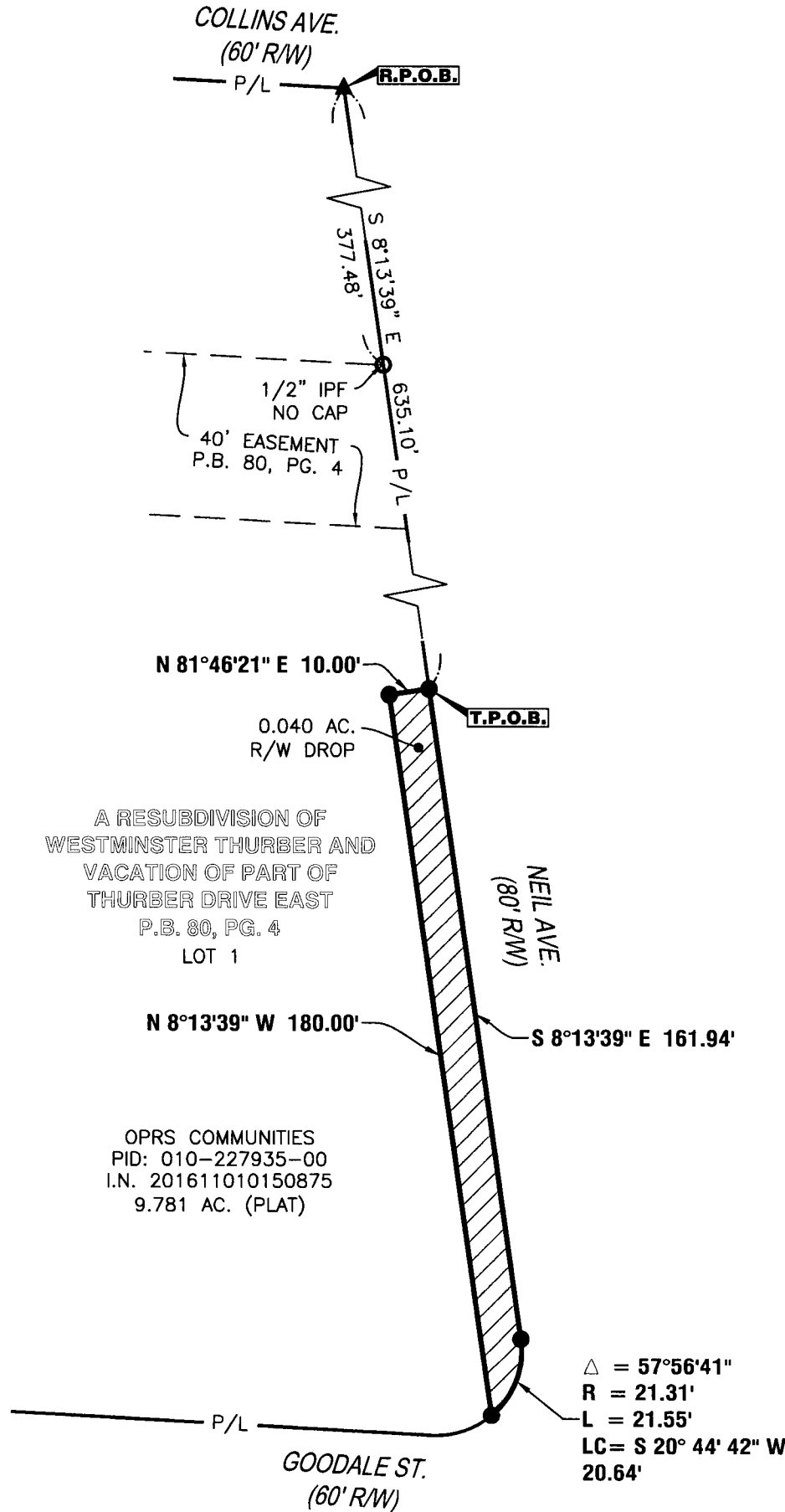


OFFICES

128 East Main Street
Logan, Ohio 43138
740-385-2140

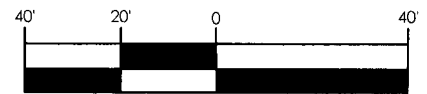
1495 Old Henderson Road
Columbus, Ohio 43220
614-459-6992

507 Main Street
Zanesville, Ohio 43701
740-450-1640



NORTH

GRAPHIC SCALE



1" = 40'

A RESUBDIVISION OF
WESTMINSTER THURBER AND
VACATION OF PART OF
THURBER DRIVE EAST
P.B. 80, PG. 4
LOT 1

OPRS COMMUNITIES
PID: 010-227935-00
I.N. 201611010150875
9.781 AC. (PLAT)

SURVEYOR'S NOTES

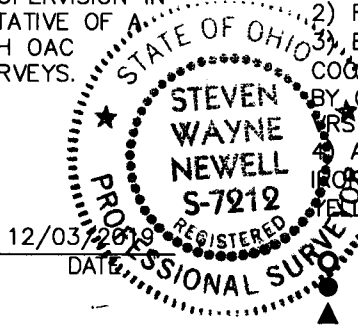
- 1) BASED ON RECORDS ON FILE AT THE FRANKLIN COUNTY RECORDER'S OFFICE AND THE FRANKLIN COUNTY ENGINEER'S OFFICE.
- 2) REFERENCES: DOCUMENTS NOTED HEREON.
- 3) BEARINGS ARE BASED ON THE OHIO STATE PLANE COORDINATE SYSTEM - OHIO SOUTH ZONE (NAD83) BY GPS OBSERVATION, REFERENCED TO THE ODOT VRS NETWORK.
- 4) ALL IRON PINS SET ARE 3/4" INSIDE DIAMETER IRON PIPES, 30" IN LENGTH WITH A 1" DIAMETER FELLOW CAP STAMPED "SANDS DECKER."

CERTIFICATION

THIS DRAWING IS REPRESENTATIVE OF AN ACTUAL FIELD SURVEY PERFORMED UNDER MY DIRECT SUPERVISION IN APRIL, 2019. THIS DRAWING IS REPRESENTATIVE OF BOUNDARY SURVEY IN CONFORMANCE WITH OAC 4753-37 STANDARDS FOR BOUNDARY SURVEYS.

SANDS DECKER CPS

STEVEN W. NEWELL
OHIO PROFESSIONAL
SURVEYOR 7212



IRON PIN FOUND
IRON PIN SET
MAG NAIL SET