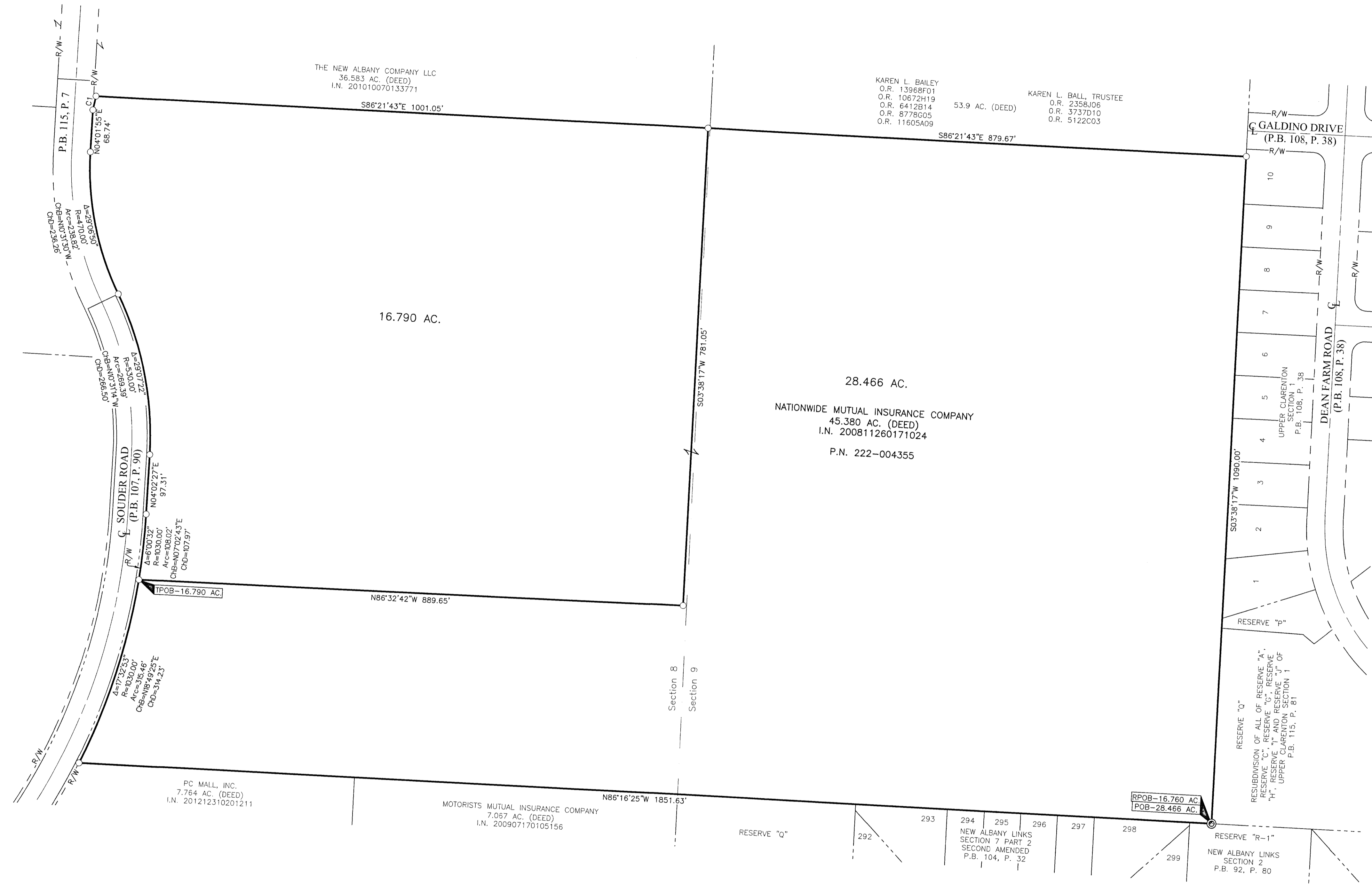


SURVEY OF ACREAGE PARCELS

SECTIONS 8 AND 9, QUARTER TOWNSHIP 1, TOWNSHIP 2, RANGE 16

UNITED STATES MILITARY LANDS

CITY OF NEW ALBANY, COUNTY OF FRANKLIN, STATE OF OHIO



- = STONE FND.
- = MON. FND.
- = I.P. FND.
- = I.P. SET
- = MAG. NAIL FND.
- = MAG. NAIL SET
- ▲ = R.R. SPK. FND.
- △ = R.R. SPK. SET
- = P.K. NAIL FND.
- ⊙ = PERM. MRKR. SET

I.P. Set are 13/16" I.D. iron pipes 30" long with cap stamped EMHT INC. Permanent Markers set are one-inch solid iron pins with aluminum cap stamped EMHT INC.

GRAPHIC SCALE (in feet)

SURVEY NOTE:
This survey was prepared using documents of record, prior plats of survey, and observed evidence located by an actual field survey in March 2019.

BASIS OF BEARINGS:
The bearings shown hereon are based on the Ohio State Plane Coordinate System, South Zone, NAD83 (1986 Adjustment). Control for bearings was from coordinates of monuments FRANK 80 and FRANK 180, having a bearing of North 85° 57' 24" West, as established by the Franklin County Engineering Department using Global Positioning System procedures and equipment.

RECEIVED

Franklin County Engineer
Cornell K. Robertson, P.E., P.S.

<p style="font-size: 8px;">Evans, Mechwart, Hambleton & Tilton, Inc. Engineers • Surveyors • Planners • Scientists 5500 New Albany Road, Columbus, OH 43054 Phone: 614.775.4500 Toll Free: 888.773.3646 emht.com</p>	Date: September 18, 2019	
	Scale: 1" = 100'	
	Job No: 2019-0900	
	Sheet: 1 of 1	
REVISIONS		
MARK	DATE	DESCRIPTION

By Matthew A. Kirk 18 SEP 19
 Matthew A. Kirk
 Professional Surveyor No. 7865
 Date