

DRAWN BY: AB
CHECKED: JULY
DATE: 8/21/2019

PLAN ISSUE/REVISION
NO.:

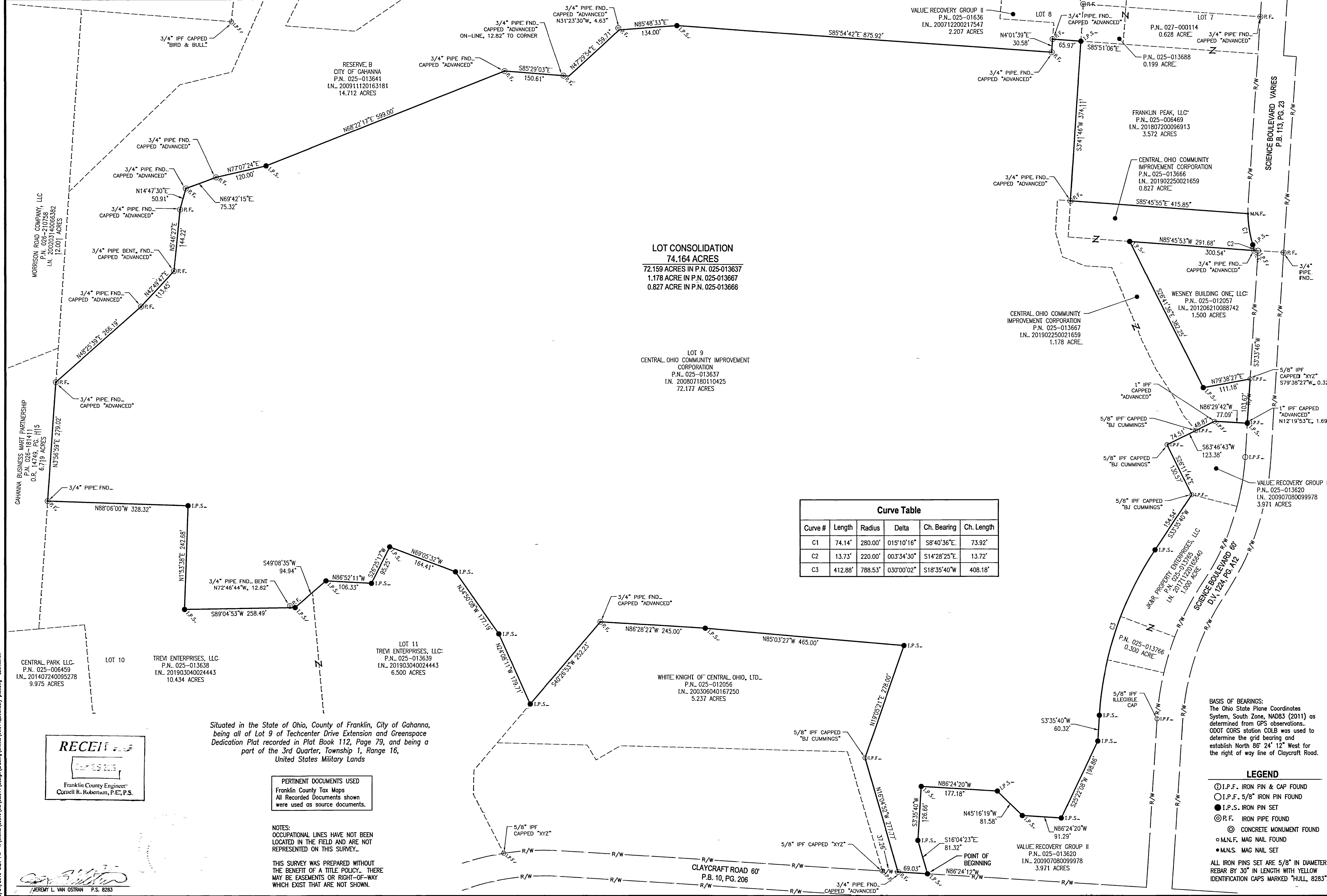
W.L. Associates, Inc.
58 Grant Street
Franklin, OH 45005
Phone: (740) 944-6451
Fax: (740) 944-8859
www.wlassoc.com

HULL
Environment / Energy / Infrastructure

**CENTRAL OHIO COMMUNITY IMPROVEMENT
CITY OF GAHANNA, FRANKLIN CO., OHIO
BOUNDARY SURVEY PLAT**

JOB NUMBER:
OCI014

1 / 1



LOT CONSOLIDATION
74.164 ACRES
72.159 ACRES IN P.N. 025-013637
1.178 ACRE IN P.N. 025-013667
0.827 ACRE IN P.N. 025-013666

LOT 9
CENTRAL OHIO COMMUNITY IMPROVEMENT CORPORATION
P.N. 025-013637
I.N. 200807180110425
72.177 ACRES

Curve Table

Curve #	Length	Radius	Delta	Ch. Bearing	Ch. Length
C1	74.14'	280.00'	015°10'16"	S8°40'36"E	73.92'
C2	13.73'	220.00'	003°34'30"	S14°28'25"E	13.72'
C3	412.88'	788.53'	030°00'02"	S18°35'40"W	408.18'

Situated in the State of Ohio, County of Franklin, City of Gahanna, being all of Lot 9 of Techcenter Drive Extension and Greenspace Dedication Plat recorded in Plat Book 112, Page 79, and being a part of the 3rd Quarter, Township 1, Range 16, United States Military Lands

RECEIVED
Franklin County Engineer
Cornell R. Robertson, P.E., P.S.

PERTINENT DOCUMENTS USED
Franklin County Tax Maps
All Recorded Documents shown were used as source documents.

NOTES:
OCCUPATIONAL LINES HAVE NOT BEEN LOCATED IN THE FIELD AND ARE NOT REPRESENTED ON THIS SURVEY.

THIS SURVEY WAS PREPARED WITHOUT THE BENEFIT OF A TITLE POLICY. THERE MAY BE EASEMENTS OR RIGHT-OF-WAY WHICH EXIST THAT ARE NOT SHOWN.

BASIS OF BEARINGS:
The Ohio State Plane Coordinates System, South Zone, NAD83 (2011) as determined from GPS observations. ODOT CORS station COLB was used to determine the grid bearing and establish North 86° 24' 12" West for the right of way line of Claycraft Road.

LEGEND
① I.P.F. IRON PIN & CAP FOUND
○ I.P.F. 5/8" IRON PIN FOUND
● I.P.S. IRON PIN SET
⊙ R.F. IRON PIPE FOUND
⊙ CONCRETE MONUMENT FOUND
○ M.N.F. MAG NAIL FOUND
● M.N.S. MAG NAIL SET
ALL IRON PINS SET ARE 5/8" IN DIAMETER REBAR BY 30" IN LENGTH WITH YELLOW IDENTIFICATION CAPS MARKED "HULL, 8283"

9/24/2019 3:21 PM F:\clients\active\oci014\design\drawing\sheet\oc014_boundary_plat.dwg abemick

JEREMY L. VAN OSTRAN P.S. 8283