

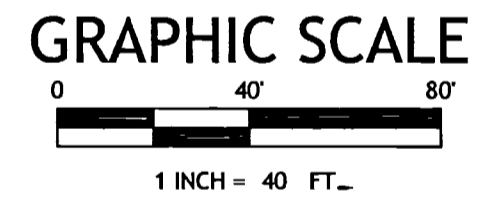
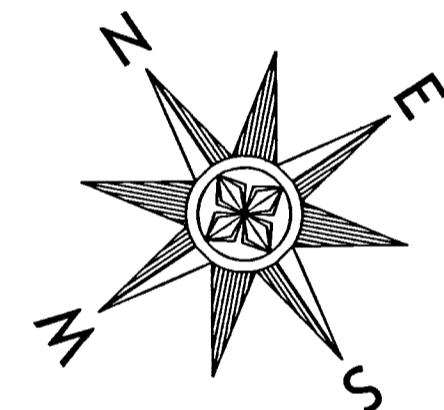
# PLAT OF SURVEY

Situated in the City of Grove City, County of Franklin and State of Ohio, being part of VMS 1383, Virginia Military District

SYMBOL LEGEND	
RW	- Right of Way
PL	- Adjoiner Line
CL	- Centerline
C	- Calculated
M	- Measured
R	- Record
POB	- Point of Beginning
TPOB	- True Point of Beginning
⊠	- R/W Mon Fd. as Noted
○	- Iron Pin Fd. as Noted
●	- Iron Pipe Fd. as Noted
⊙	- 5/8" Rebar w/Cap Set "DEWITT S-8625"
✕	- Railroad Spike Set
▲	- Mag Nail/Drill Hole Set

**BASIS OF BEARINGS:**  
Basis of bearings is the northerly line of the subject parcel, observed as being S 86°37'16" E from Grid North, Ohio State Plane Coordinate System, South Zone (3402), NAD83 (2011, EPOCH 2010). Distances are listed in Ground.

**SURVEY REFERENCES:**  
- Surveys on file at the County Engineer's Office  
- Deeds as shown hereon  
- County Tax Maps

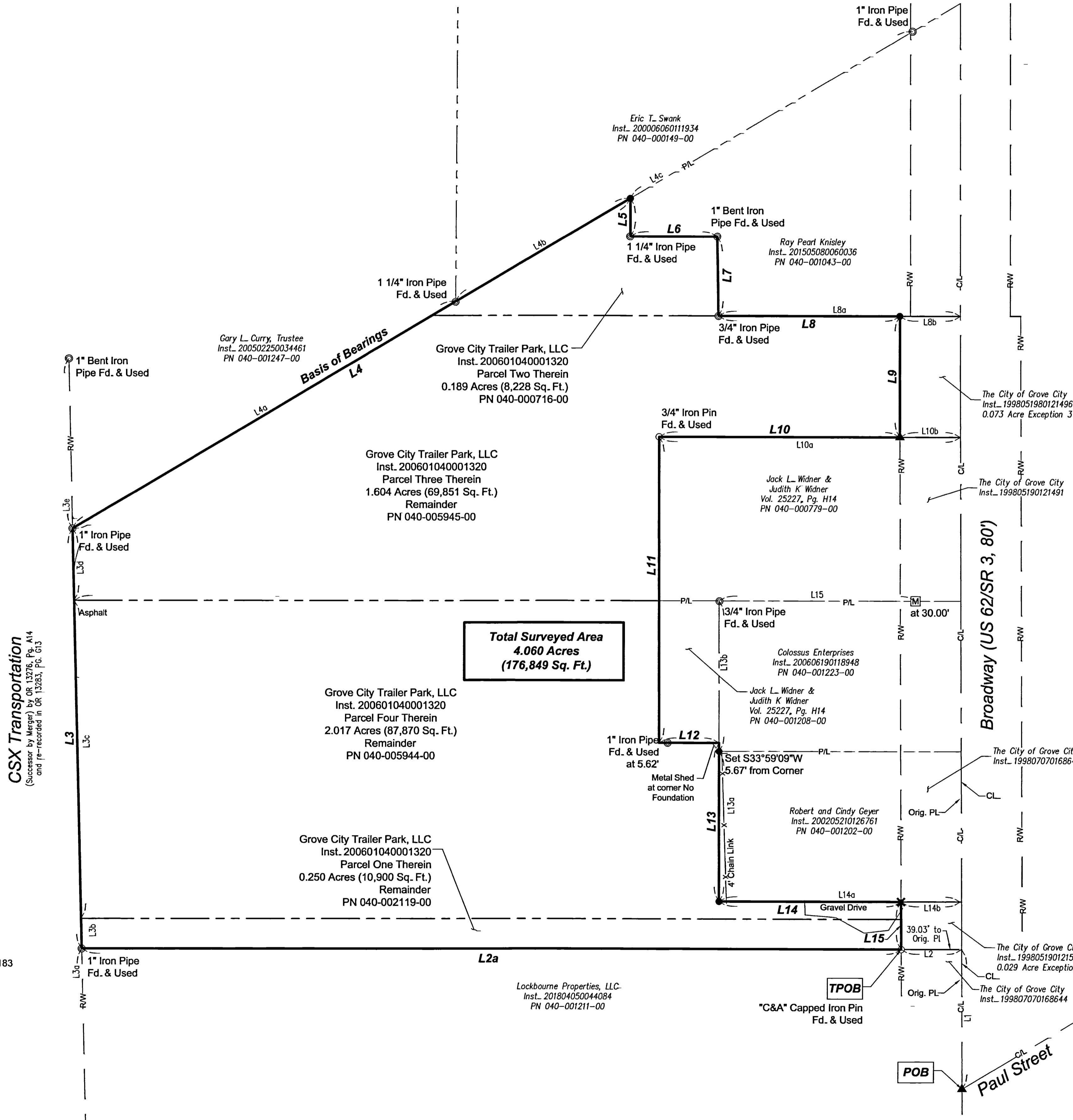


**PREPARED BY:**  
Cardinal Precision Surveying, LLC  
2715 Virginia Ridge Road  
Philo, OH 43771  
(330) 603-0264  
www.cardinalprecisionsurveying.com  
ade Witt@cardinalprecisionsurveying.com

**PREPARED FOR:**

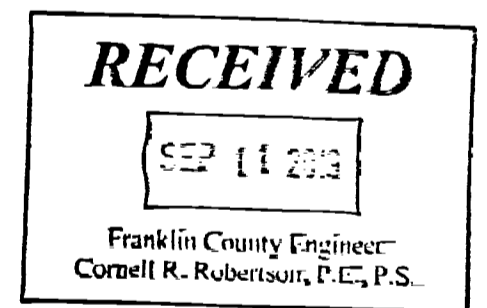


Commercial Real Estate  
Due Diligence Management  
3465 South Arlington Rd. Suite E#183  
Akron, OH 44312  
866.290.8121  
www.amnational.net  
FILE NO. 20191115-001



**LINE TABLE:**

LINE	BEARING	DISTANCE
L1	N 33°50'06" E	92.82' R&C
L2	N 55°54'02" W	40.00' R&C
L2a	N 55°54'02" W	544.73' M (544.67' R)
L3	S 32°44'02" W	279.57' M
L3a	N 32°44'02" E	360.63' M (360.79' R)
L3b	N 32°44'02" E	20.01' R&C
L3c	N 32°44'02" E	211.63' C (212' R)
L3d	N 32°44'02" E	47.93' C (47.32' R)
L3e	N 32°44'02" E	113.23' M (113.00' R)
L4	S 86°37'16" E	430.59' C
L4a	S 86°37'16" E	295.85' M (296.00' R)
L4b	S 86°37'16" E	134.74' C
L4c	S 86°37'14" E	217.93' M
L5	S 33°59'09" W	25.37' C (25.70' R)
L6	S 55°54'02" E	58.00' R&M
L7	S 33°06'16" W	52.79' M (53.00' R)
L8	S 55°54'02" E	120.43' C
L8a	S 55°54'02" E	160.43' C (160.00' R)
L8b	S 55°54'02" E	40.00' R&C
L9	S 33°59'08" W	80.35' C (80.00' R)
L10	N 55°54'02" W	160.00' C
L10a	S 55°54'02" E	200.00' R&C
L10b	S 55°54'02" E	40.00' R&C
L11	N 33°59'09" E	203.66' M (204.00' R)
L12	S 55°54'02" E	40.00' R&C
L13	N 33°59'09" E	105.63' C
L13a	N 33°59'09" E	100.00' R&C
L13b	N 33°59'09" E	100.00' R&C
L14	S 55°54'02" E	120.83' C
L14a	S 55°54'02" E	160.00' R&C
L14b	S 55°54'02" E	39.17' R&C
L15	S 33°41'04" W	31.67' C (31.95' R)
L14d	S 55°54'02" E	130.39' M



**CERTIFICATION:**

I certify that the parcel shown hereon has been surveyed by me or under my direct supervision in accordance with the Minimum Standards For Boundary Surveys, Ohio Administrative Code, Chapter 4733.37.

By: *Alaina J. DeWitt*  
Alaina J. DeWitt, P.S.  
License No. S-8625  
Field Date: August 2019  
File No. 19108  
Date of Preliminary: August 23, 2019  
Date of Last Revision: September 10, 2019

