

**SURVEY EXHIBIT OF 0.034 ACRE TRACT  
PART OF LAND OF ORTHOPAEDIC  
MEDICAL PROPERTIES, LLC  
STATE OF OHIO, COUNTY OF FRANKLIN,  
CITY OF UPPER ARLINGTON**



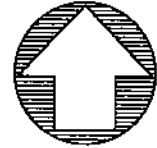
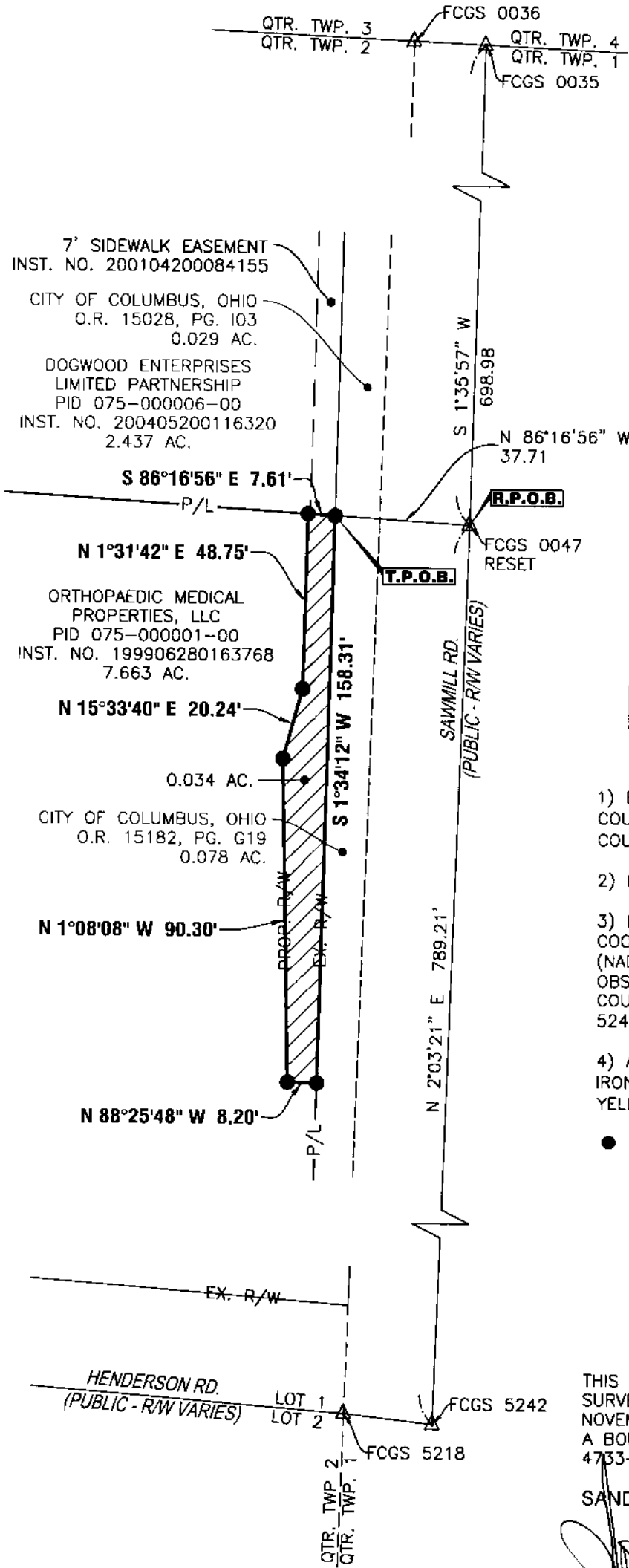
OFFICES

128 East Main Street  
Logan, Ohio 43138  
740-385-2140

1495 Old Henderson Road  
Columbus, Ohio 43220  
614-459-6992

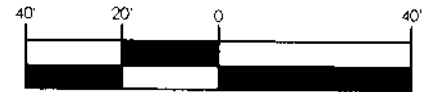
507 Main Street  
Zanesville, Ohio 43701  
740-450-1640

**LOT 1, FRACTIONAL TOWNSHIP 2, TOWNSHIP 1 NORTH,  
RANGE 19 WEST, UNITED STATE MILITARY LANDS**

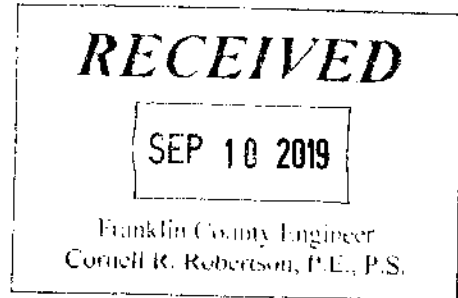


**NORTH**

**GRAPHIC SCALE**



1" = 40'



**SURVEYOR'S NOTES**

- 1) BASED ON RECORDS ON FILE AT THE FRANKLIN COUNTY RECORDER'S OFFICE AND THE FRANKLIN COUNTY ENGINEER'S OFFICE.
- 2) REFERENCES: DOCUMENTS NOTED HEREON.
- 3) BEARINGS ARE BASED ON THE OHIO STATE PLANE COORDINATE SYSTEM - OHIO SOUTH ZONE (NAD83-NSRS 2007 ADJUSTMENT) BY GPS OBSERVATION, WITH THE BEARING BETWEEN FRANKLIN COUNTY ENGINEER SURVEY CONTROL MONUMENTS FCGS 5242 & FCGS 0047 RESET BEING N 02°03'21" E.
- 4) ALL IRON PINS SET ARE 3/4" INSIDE DIAMETER IRON PIPES, 30" IN LENGTH WITH A 1" DIAMETER YELLOW CAP STAMPED "SANDS DECKER."

● IRON PIN SET

**CERTIFICATION**

THIS DRAWING IS REPRESENTATIVE OF AN ACTUAL FIELD SURVEY PERFORMED UNDER MY DIRECT SUPERVISION IN NOVEMBER, 2017. THIS DRAWING IS REPRESENTATIVE OF A BOUNDARY SURVEY IN CONFORMANCE WITH OAC 4733-37 STANDARDS FOR BOUNDARY SURVEYS.

SANDS DECKER CPS

STEVEN W. NEWELL  
OHIO PROFESSIONAL  
SURVEYOR 7212

09/09/2019  
DATE