



Evans, Mechwart, Hambleton & Tilton, Inc.
 Engineers • Surveyors • Planners • Scientists
 5500 New Albany Road, Columbus, OH 43054
 Phone: 614.775.4500 Toll Free: 888.775.3648
 emht.com

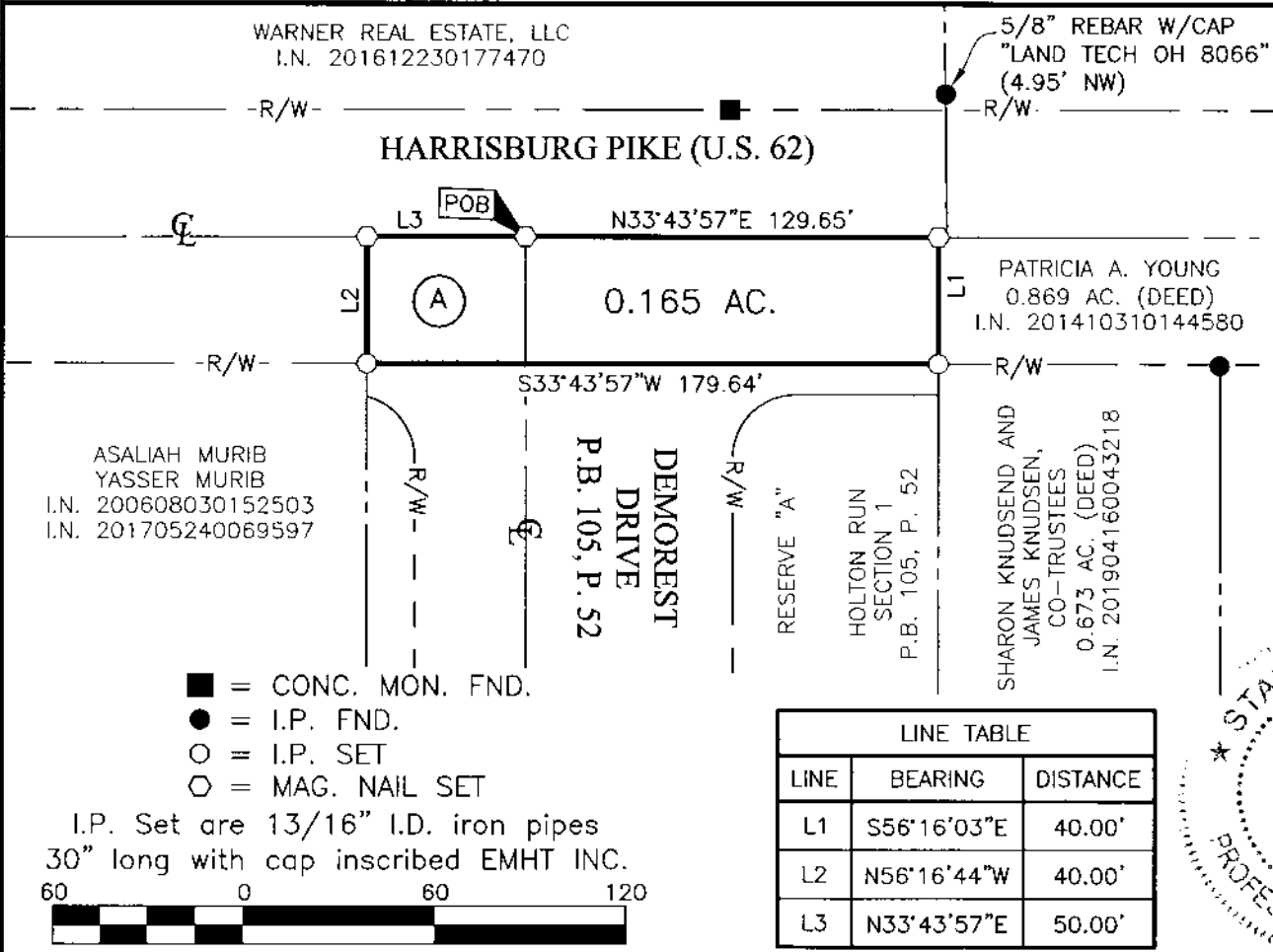
SURVEY OF ACREAGE PARCEL

VIRGINIA MILITARY SURVEY NUMBER 1383
 JACKSON TOWNSHIP, COUNTY OF FRANKLIN, STATE OF OHIO

Date: July 31, 2019

Scale: 1" = 60'

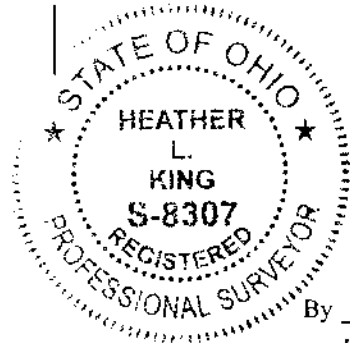
Job No: 2019-0489



BASIS OF BEARINGS:
 The bearings shown hereon are based on the Ohio State Plane Coordinate System, South Zone, NAD83 (NSRS 2007). Control for bearings was from coordinates of monuments FCGS 5539 and FCGS 0024 RESET, having a bearing of North 33° 43' 57" East for a portion of Harrisburg Pike, as established by the Franklin County Engineering Department using Global Positioning System procedures and equipment.

SURVEY NOTE:
 This survey was prepared using documents of record, prior plats of survey, and observed evidence located by an actual field survey in June of 2019.

LINE TABLE		
LINE	BEARING	DISTANCE
L1	S56°16'03"E	40.00'
L2	N56°16'44"W	40.00'
L3	N33°43'57"E	50.00'



HOOVER PARK, LTD.
 74.312 AC. (DEED)
 I.N. 200301130011606
 APN: 040-009247

By *Heather L. King* 8/14/19
 Heather L. King
 Professional Surveyor No. 8307
 Date

