



Evans, Mechwart, Hambleton & Tilton, Inc.
 Engineers • Surveyors • Planners • Scientists
 5500 New Albany Road, Columbus, OH 43054
 Phone: 614.775.4500 Toll Free: 888.775.3648
 emht.com

SURVEY OF ACREAGE PARCEL

HALF SECTION 29, SECTION 18, TOWNSHIP 16, RANGE 20

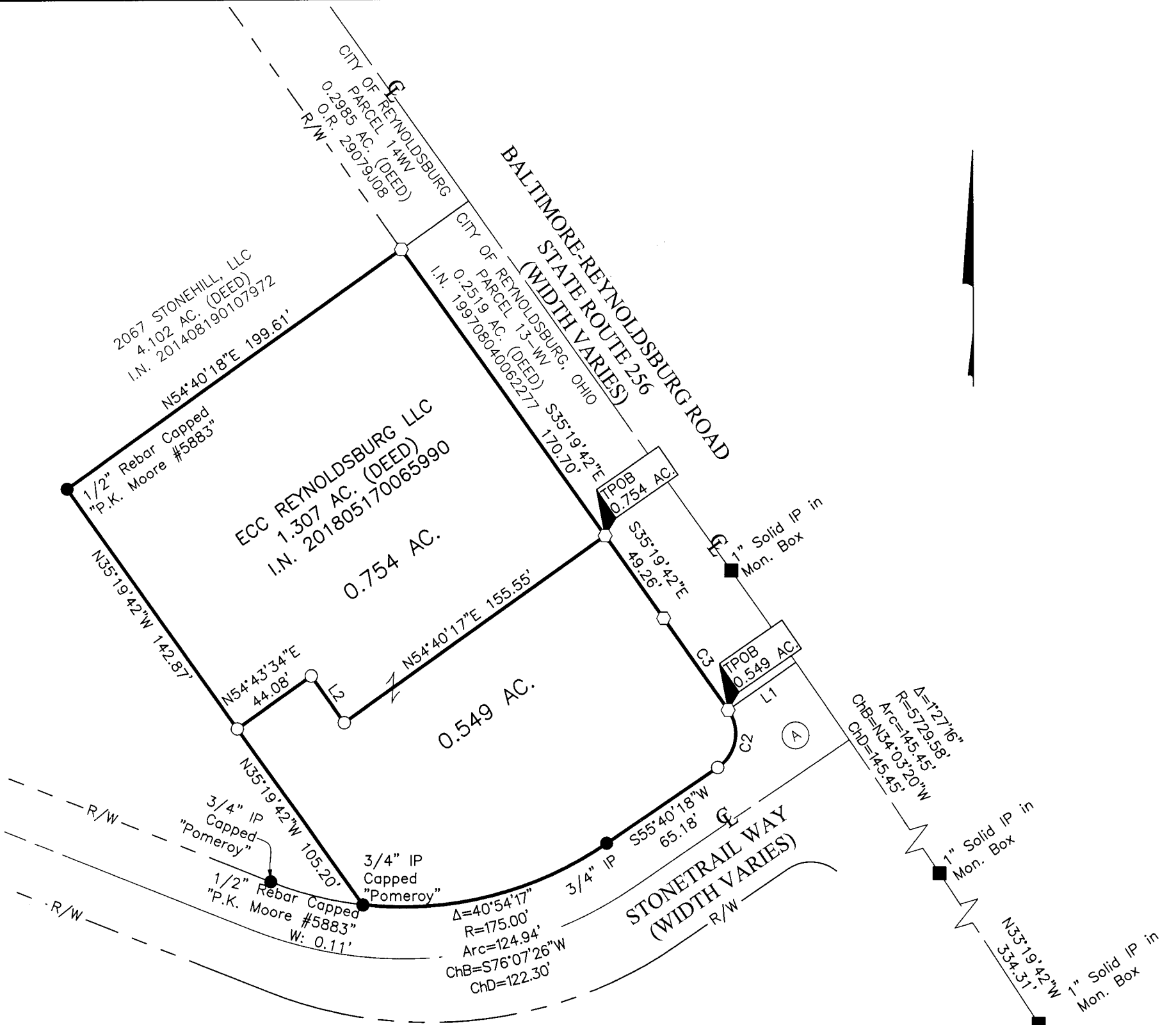
REFUGEE LANDS

CITY OF REYNOLDSBURG, COUNTY OF FRANKLIN, STATE OF OHIO

Date: August 2, 2019

Job No: 2019-0857

Scale: 1" = 60'



SURVEY NOTE:

This survey was prepared using documents of record, prior plats of survey, and observed evidence located by an actual field survey in March, 2017.

BASIS OF BEARINGS:

The bearings shown hereon are based on the Ohio State Plane Coordinate System South Zone per NAD83 (NSRS2007). The portion of the centerline of State Route 256 having a bearing of South 35° 19' 42" East, is designated the "basis of bearing" for this survey.

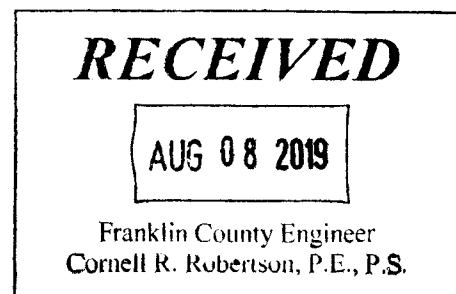
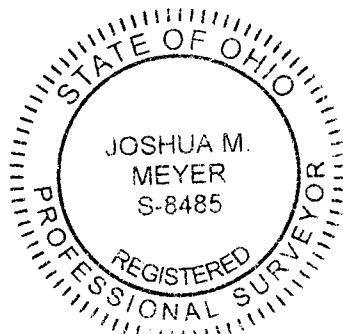
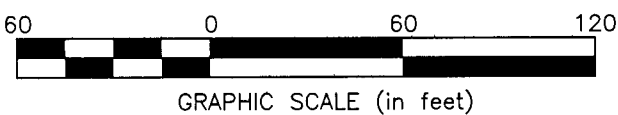
LINE TABLE		
LINE	BEARING	DISTANCE
L1	S55°13'01"W	40.00'
L2	S35°16'26"E	27.79'

CURVE TABLE					
CURVE	DELTA	RADIUS	ARC	CH. BEARING	CH. DIST.
C1	4°40'13"	1909.86'	155.67'	N30°59'36"W	155.63'
C2	90°27'16"	20.00'	31.57'	S10°26'40"W	28.40'
C3	0°32'44"	5689.58'	54.16'	S35°03'20"E	54.16'

(A) THE CITY OF REYNOLDSBURG
 0.976 AC. (DEED)
 O.R. 4817B18

- = STONE FND.
- = MON. FND.
- = I.P. FND.
- = I.P. SET
- = MAG. NAIL FND.
- = MAG. NAIL SET
- ▲ = R.R. SPK. FND.
- △ = R.R. SPK. SET
- ◆ = P.K. NAIL FND.

I.P. Set are 13/16" I.D. iron pipes 30" long with cap inscribed EMHT INC.



By *JM*
 Joshua M. Meyer
 Professional Surveyor No. 8485

8-2-2019
 Date

U:\20190857\DWG\04SHEETS\BOUNDARY\20190857-VS-BNDY-01.DWG plotted by PHILPOTT, ANDREW on 8/6/2019 8:18:29 AM last saved by APHILPOTT on 8/5/2019 11:23:13 AM