

Legend

- City Ordinance No. 1378-58 & Existing Limited Access R/W Easement State of Ohio FRA-33-15.07
- M.N.F. Mag Nail Found
- I.P.F. Iron Pin Found
- ⊙ P.F. Iron Pipe Found
- D.H.F. Drilled Hole Found
- M.N.S. Mag Nail Set
- I.P.S. Iron Pipe Set - 3/4" Inside Diameter Iron Pipe with a yellow cap stamped "OHM"

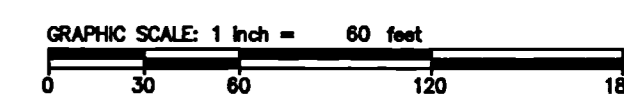
Notes

- * Established by an actual field survey performed in May 2016
- ** Chesapeake and Ohio Railway as conveyed from the Hocking Valley Railway Co. by deed recorded in Deed Book 924 page 338, now known as CSX Transportation Inc., successor by merger, whose merger documents have been summarized and recorded as Official Record 13276 A16 and subsequently re-recorded as Official Record 13283 G13.

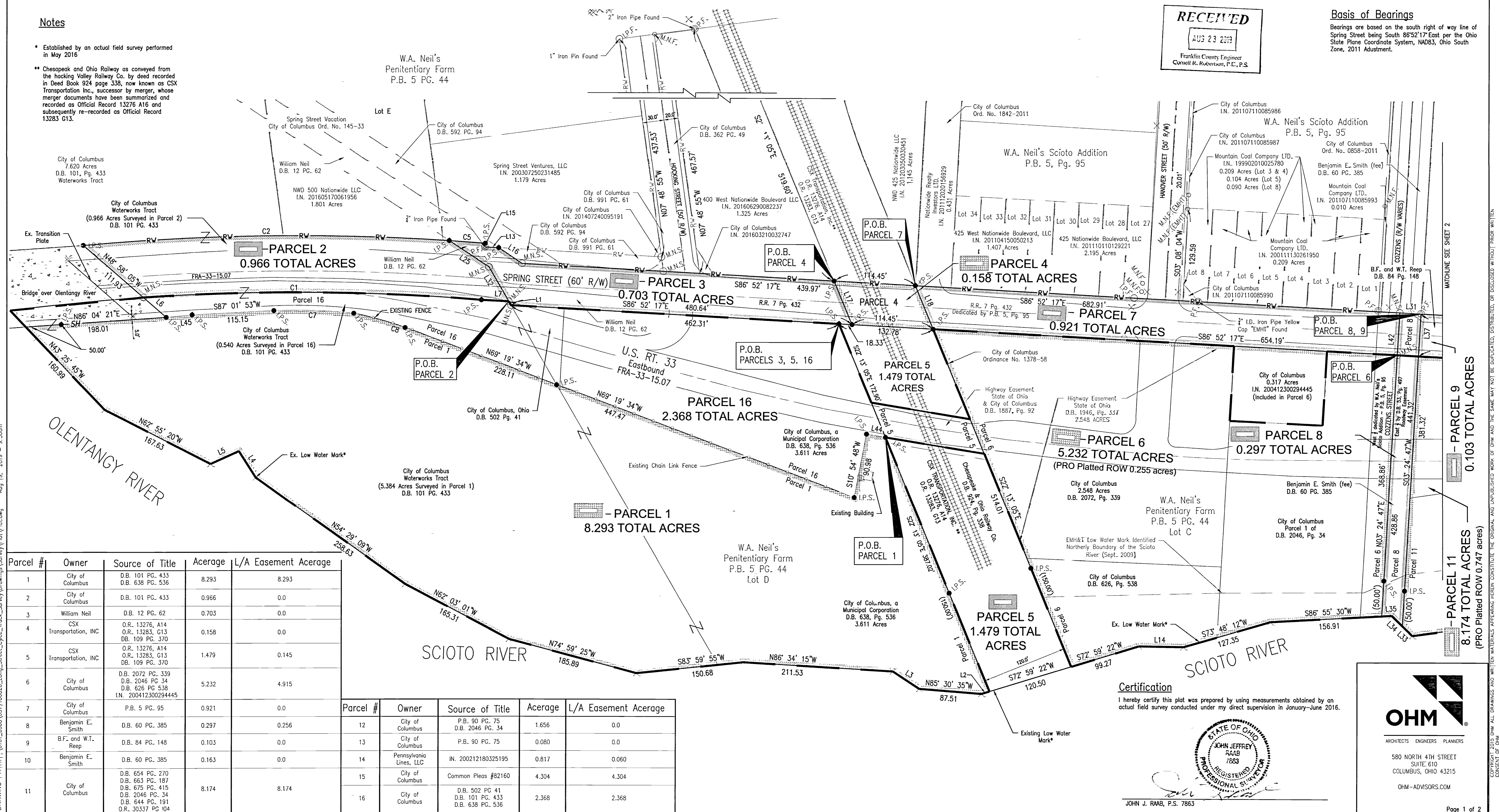
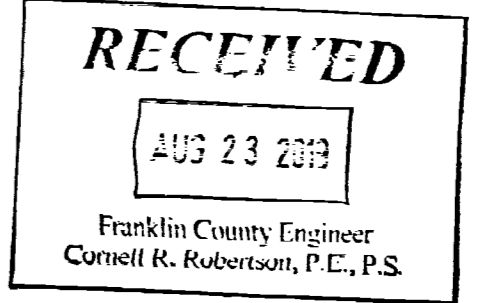
LONG STREET EXTENSION LIMITED ACCESS RIGHT-OF-WAY CONVERSION

HALF SECTION 9 AND HALF SECTION 10, SECTION 8 FRACTIONAL SECTION 25, SECTION 16

TOWNSHIP 5, RANGE 22, SCOFIELD'S SURVEY OF THE REFUGEE LANDS CITY OF COLUMBUS, FRANKLIN COUNTY, OHIO



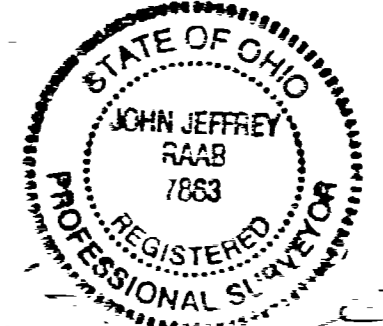
Basis of Bearings
Bearings are based on the south right of way line of Spring Street being South 86°52'17" East per the Ohio State Plane Coordinate System, NAD83, Ohio South Zone, 2011 Adjustment.



Parcel #	Owner	Source of Title	Acerage	L/A Easement Acerage
1	City of Columbus	D.B. 101 PG. 433 D.B. 638 PG. 536	8.293	8.293
2	City of Columbus	D.B. 101 PG. 433	0.966	0.0
3	William Neil	D.B. 12 PG. 62	0.703	0.0
4	CSX Transportation, INC	O.R. 13276, A14 O.R. 13283, G13 DB. 109 PG. 370	0.158	0.0
5	CSX Transportation, INC	O.R. 13276, A14 O.R. 13283, G13 DB. 109 PG. 370	1.479	0.145
6	City of Columbus	D.B. 2072 PG. 339 D.B. 2046 PG. 34 D.B. 626 PG. 538 I.N. 200412300294445	5.232	4.915
7	City of Columbus	P.B. 5 PG. 95	0.921	0.0
8	Benjamin E. Smith	D.B. 60 PG. 385	0.297	0.256
9	B.F. and W.T. Reep	D.B. 84 PG. 148	0.103	0.0
10	Benjamin E. Smith	D.B. 60 PG. 385	0.163	0.0
11	City of Columbus	D.B. 654 PG. 270 D.B. 663 PG. 187 D.B. 675 PG. 415 D.B. 2046 PG. 34 D.B. 644 PG. 191 O.R. 30337 PG. 404	8.174	8.174

Parcel #	Owner	Source of Title	Acerage	L/A Easement Acerage
12	City of Columbus	P.B. 90 PG. 75 D.B. 2046 PG. 34	1.656	0.0
13	City of Columbus	P.B. 90 PG. 75	0.080	0.0
14	Pennsylvania Lines, LLC	IN. 200212180325195	0.817	0.060
15	City of Columbus	Common Pleas #82160	4.304	4.304
16	City of Columbus	D.B. 502 PG. 41 D.B. 101 PG. 433 D.B. 638 PG. 536	2.368	2.368

Certification
I hereby certify this plat was prepared by using measurements obtained by an actual field survey conducted under my direct supervision in January-June 2016.

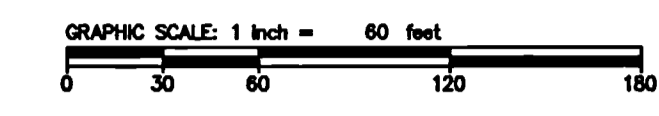
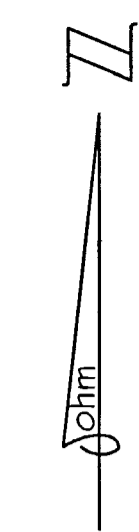


JOHN J. RAAB, P.S. 7863

OHM
ARCHITECTS ENGINEERS PLANNERS
580 NORTH 4TH STREET
SUITE 610
COLUMBUS, OHIO 43215
OHM-ADVISORS.COM

DRAWING PATH: P:\6101_6500\6377160020_Long_Street_Track_Survey\Drawings\Survey\Plat\Plat.dwg Aug 19, 2019 - 9:36am

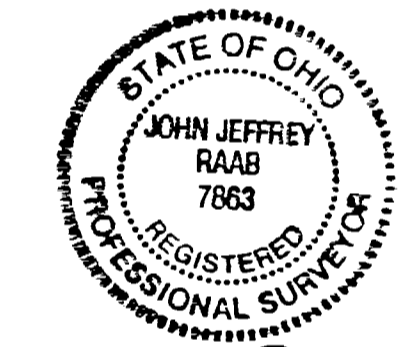
COPYRIGHT 2015 OHM ALL DRAWINGS AND WRITTEN MATERIALS APPEARING HEREIN CONSTITUTE THE ORIGINAL AND UNPUBLISHED WORK OF OHM AND THE SAME MAY NOT BE REPRODUCED, DISTRIBUTED, OR DISCLOSED WITHOUT PRIOR WRITTEN CONSENT OF OHM



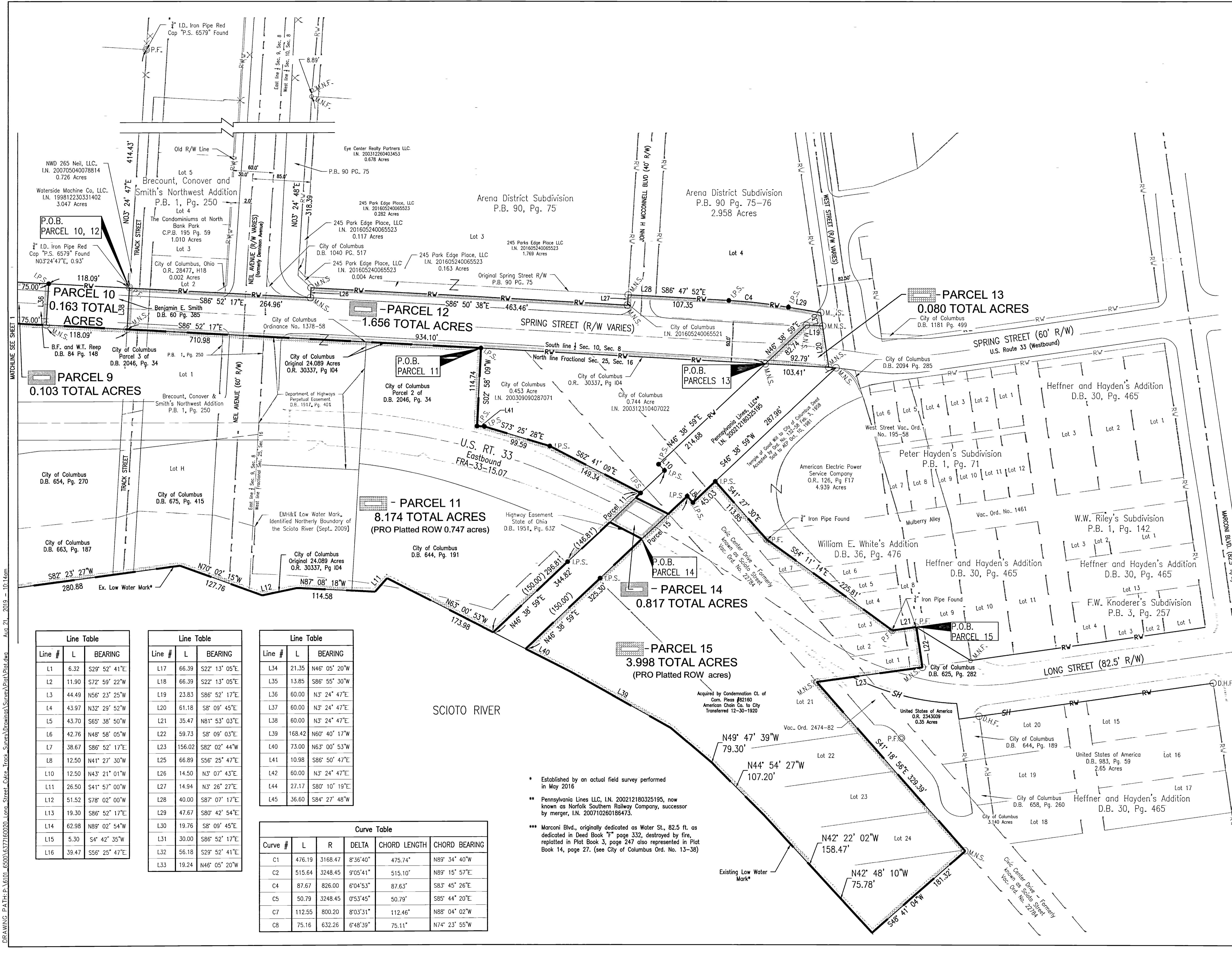
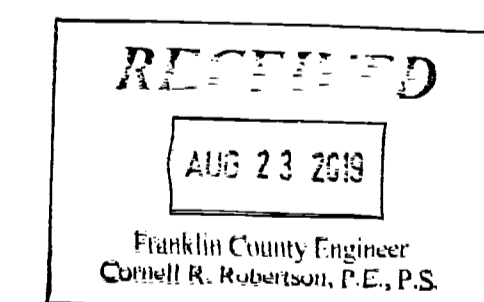
Basis of Bearings
 Bearings are based on the south right of way line of Spring Street being South 86°52'17" East per the Ohio State Plane Coordinate System, NAD83, Ohio South Zone, 2011 Adjustment.

Legend
 See sheet 1 for legend

Certification
 I hereby certify this plat was prepared by using measurements obtained by an actual field survey conducted under my direct supervision in January-June 2016.



JOHN J. RAAB, P.S. 7863



Line #	L	BEARING
L1	6.32	S29° 52' 41"E
L2	11.90	S72° 59' 22"W
L3	44.49	N56° 23' 25"W
L4	43.97	N32° 29' 52"W
L5	43.70	S65° 38' 50"W
L6	42.76	N48° 58' 05"W
L7	38.67	S86° 52' 17"E
L8	12.50	N41° 27' 30"W
L10	12.50	N43° 21' 01"W
L11	26.50	S41° 57' 00"W
L12	51.52	S78° 02' 00"W
L13	19.30	S86° 52' 17"E
L14	62.98	N89° 02' 54"W
L15	5.30	S4° 42' 35"W
L16	39.47	S56° 25' 47"E

Line #	L	BEARING
L17	66.39	S22° 13' 05"E
L18	66.39	S22° 13' 05"E
L19	23.83	S86° 52' 17"E
L20	61.18	S8° 09' 45"E
L21	35.47	N81° 53' 03"E
L22	59.73	S8° 09' 03"E
L23	156.02	S82° 02' 44"W
L25	66.89	S56° 25' 47"E
L26	14.50	N3° 07' 43"E
L27	14.94	N3° 26' 27"E
L28	40.00	S87° 07' 17"E
L29	47.67	S80° 42' 54"E
L30	19.76	S8° 09' 45"E
L31	30.00	S86° 52' 17"E
L32	56.18	S29° 52' 41"E
L33	19.24	N46° 05' 20"W

Line #	L	BEARING
L34	21.35	N46° 05' 20"W
L35	13.85	S86° 55' 30"W
L36	60.00	N3° 24' 47"E
L37	60.00	N3° 24' 47"E
L38	60.00	N3° 24' 47"E
L39	168.42	N60° 40' 17"W
L40	73.00	N63° 00' 53"W
L41	10.98	S86° 50' 47"E
L42	60.00	N3° 24' 47"E
L44	27.17	S80° 10' 19"E
L45	36.60	S84° 27' 48"W

Curve #	L	R	DELTA	CHORD LENGTH	CHORD BEARING
C1	476.19	3168.47	8°36'40"	475.74'	N89° 34' 40"W
C2	515.64	3248.45	9°05'41"	515.10'	N89° 15' 57"E
C4	87.67	826.00	6°04'53"	87.63'	S83° 45' 26"E
C5	50.79	3248.45	0°53'45"	50.79'	S85° 44' 20"E
C7	112.55	800.20	8°03'31"	112.46'	N88° 04' 02"W
C8	75.16	632.26	6°48'39"	75.11'	N74° 23' 55"W

* Established by an actual field survey performed in May 2016
 ** Pennsylvania Lines LLC, I.N. 200212180325195, now known as Norfolk Southern Railway Company, successor by merger, I.N. 200710260186473.
 *** Marconi Blvd., originally dedicated as Water St., 82.5 ft. as dedicated in Deed Book "F" page 332, destroyed by fire, replatted in Plot Book 3, page 247 also represented in Plot Book 14, page 27. (see City of Columbus Ord. No. 13-38)

DRAWING PATH: P:\6101_6500\6377160020_Lena_Street_Civice_Track_Survey\Drawings\Survey\Plan\Plat.dwg Aug 21, 2016 - 10:14am