



Evans, Mechwart, Hambleton & Tilton, Inc.
 Engineers • Surveyors • Planners • Scientists
 5300 New Albany Road, Columbus, OH 43054
 Phone: 614.775.4300 *of Free: 888.775.3648
 emht.com

SURVEY OF ACREAGE PARCEL

VIRGINIA MILITARY SURVEY NUMBER 1388

CITY OF GROVE CITY, COUNTY OF FRANKLIN, STATE OF OHIO

Date: August 6, 2019

Job No: 2016-0121

Scale: 1" = 40'

- = STONE FND.
- = MON. FND.
- = I.P. FND.
- = I.P. SET
- = MAG. NAIL FND.
- = MAG. NAIL SET
- ▲ = R.R. SPK. FND.
- △ = R.R. SPK. SET
- = P.K. NAIL FND.

BASIS OF BEARINGS:

The bearings shown on this plat are based on the Ohio State Plane Coordinate System, South Zone, NAD83 (CORS96). Said bearings originated from a field traverse which was tied (referenced) to said coordinate system by GPS observations and observations of selected CORS base stations in the National Spatial Reference System. The portion of the southerly right-of-way line of Mill Street, having a bearing of South 55° 51' 52" East, is designated the "basis of bearing" for this survey.

I.P. Set are 13/16" I.D. iron pipes
 30" long with cap inscribed EMHT INC.

40 0 40 80

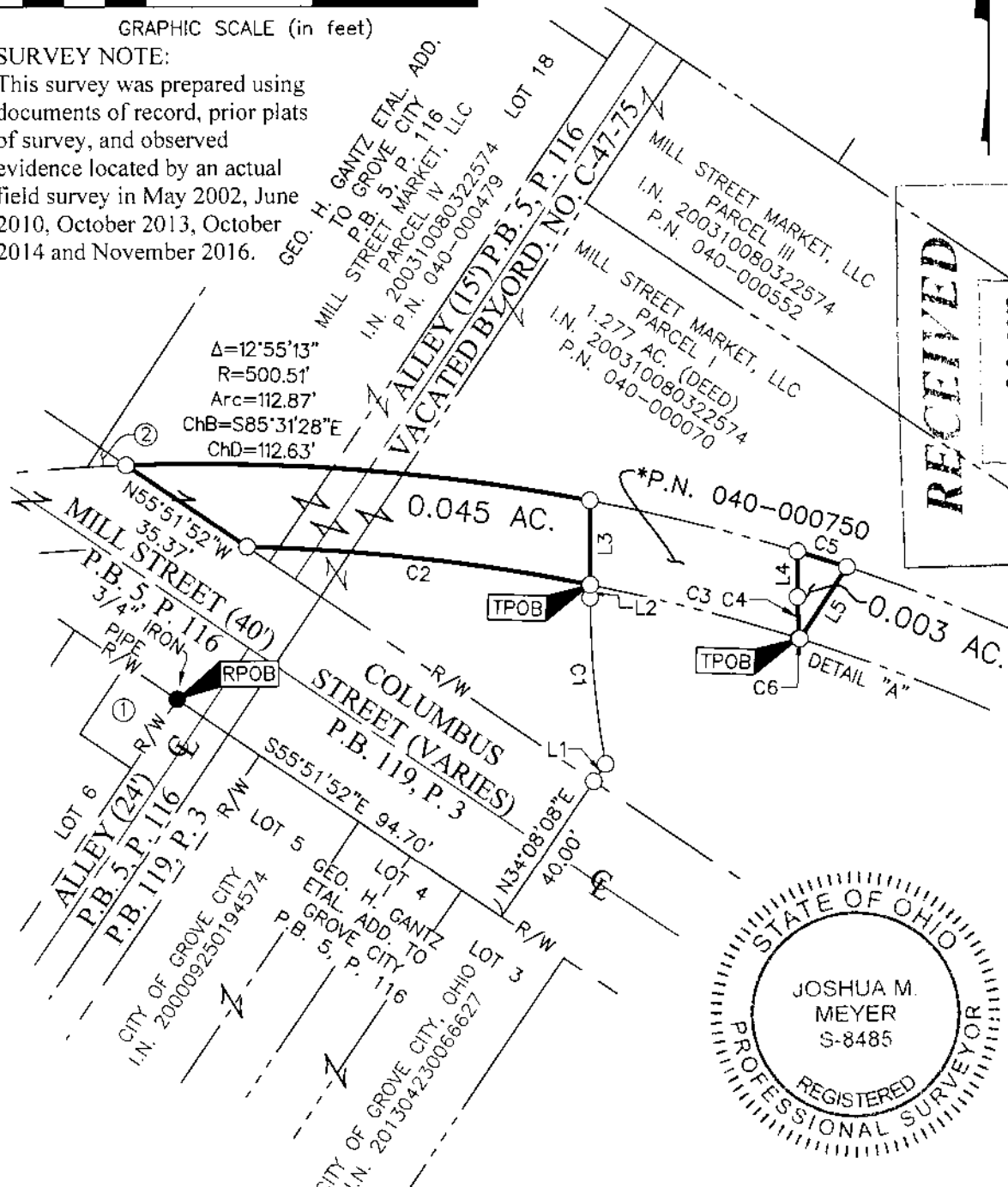


GRAPHIC SCALE (in feet)

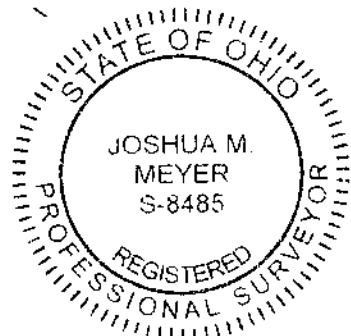
SURVEY NOTE:

This survey was prepared using documents of record, prior plats of survey, and observed evidence located by an actual field survey in May 2002, June 2010, October 2013, October 2014 and November 2016.

J:\20160121\DWG\04SHEETS\BOUNDARY\20160121-VS-BNDY-15.DWG plotted by YOUSSEF on 8/6/2019 8:01:17 AM
 Xrefs: J:\20160121\DWG\04SHEETS\BOUNDARY\20160121-VS-BNDY-15.DWG plotted by YOUSSEF, SHERRI on 8/6/2019 9:25:00 AM last saved by SYOUSSEF on 8/6/2019 8:01:17 AM



RECEIVED
 AUG 08 2019
 Franklin County Engineer
 Cornell R. Rubertson, P.E., P.S.



By
 Joshua M. Meyer
 Professional Surveyor No. 8485

8-6-2019
 Date



Evans, Mechwart, Hambleton & Tillon, Inc.
 Engineers • Surveyors • Planners • Scientists
 5500 New Albany Road, Columbus, OH 43054
 Phone: 614.775.4500 Toll Free: 888.775.3648
 emht.com

SURVEY OF ACREAGE PARCEL

VIRGINIA MILITARY SURVEY NUMBER 1388

CITY OF GROVE CITY, COUNTY OF FRANKLIN, STATE OF OHIO

Date: August 6, 2019

Job No: 2016-0121

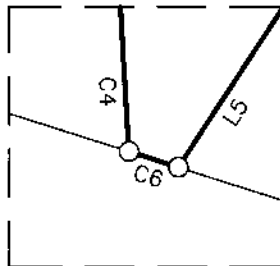
Scale: 1" = 40'

2
2

*BALTIMORE AND OHIO RAILWAY BY D.B. 592, P.1, NOW KNOWN AS CSX TRANSPORTATION, INC., SUCCESSOR BY MERGER, WHOSE MERGER DOCUMENTS WERE RECORDED IN O.R. 13276A16 AND O.R. 13276B15, AND RE-RECORDED IN O.R. 13283G13 ORIGINALLY CONVEYED TO THE COLUMBUS AND CINCINNATI MIDLAND RAILROAD CO. D.B. 184, P. 540

① COLUMBIA GAS OF OHIO, INC.
 PARCEL 43
 D.B. 2542, P. 456
 P.N. 040-000288

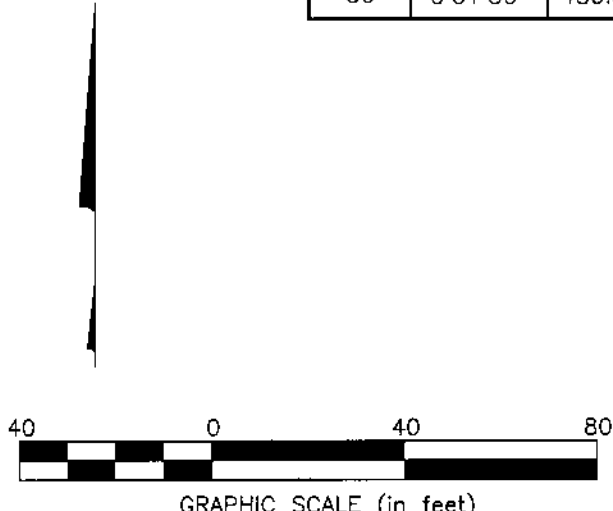
② CITY OF GROVE CITY, OHIO
 21.431 SQ. FT. (DEED)
 I.N. 201503310040283



DETAIL "A"
 NOT TO SCALE

LINE TABLE		
LINE	BEARING	DISTANCE
L1	N34°07'35"E	5.13'
L2	N00°08'16"W	3.13'
L3	S00°08'16"E	20.40'
L4	N00°08'16"W	11.04'
L5	S33°21'50"W	20.75'

CURVE TABLE					
CURVE	DELTA	RADIUS	ARC	CH. BEARING	CH. DIST.
C1	10°17'09"	225.00'	40.39'	S05°16'50"E	40.34'
C2	9°58'43"	480.51'	83.68'	N83°35'11"W	83.58'
C3	6°12'02"	480.51'	52.00'	S75°29'49"E	51.97'
C4	3°16'41"	175.00'	10.01'	N01°46'36"W	10.01'
C5	1°26'28"	500.51'	12.59'	S72°26'29"E	12.59'
C6	0°01'56"	480.51'	0.27'	N72°22'50"W	0.27'



RECEIVED
 AUG 08 2019
 Franklin County Engineer
 Cornell R. Robertson, P.E., P.S.

J:\20160121\DWG\04SHEETS\BOUNDARY\20160121-VS-BNDY-15.DWG plotted by YOUSSEF, SHERRI on 8/6/2019 9:27:39 AM last saved by YOUSSEF on 8/6/2019 8:01:17 AM