



Evans, Mechwart, Hambleton & Tilton, Inc.
 Engineers • Surveyors • Planners • Scientists
 5300 New Albany Road, Columbus, OH 43054
 Phone: 614.775.4500 Toll Free: 888.775.3648
 emht.com

SURVEY OF ACREAGE PARCELS

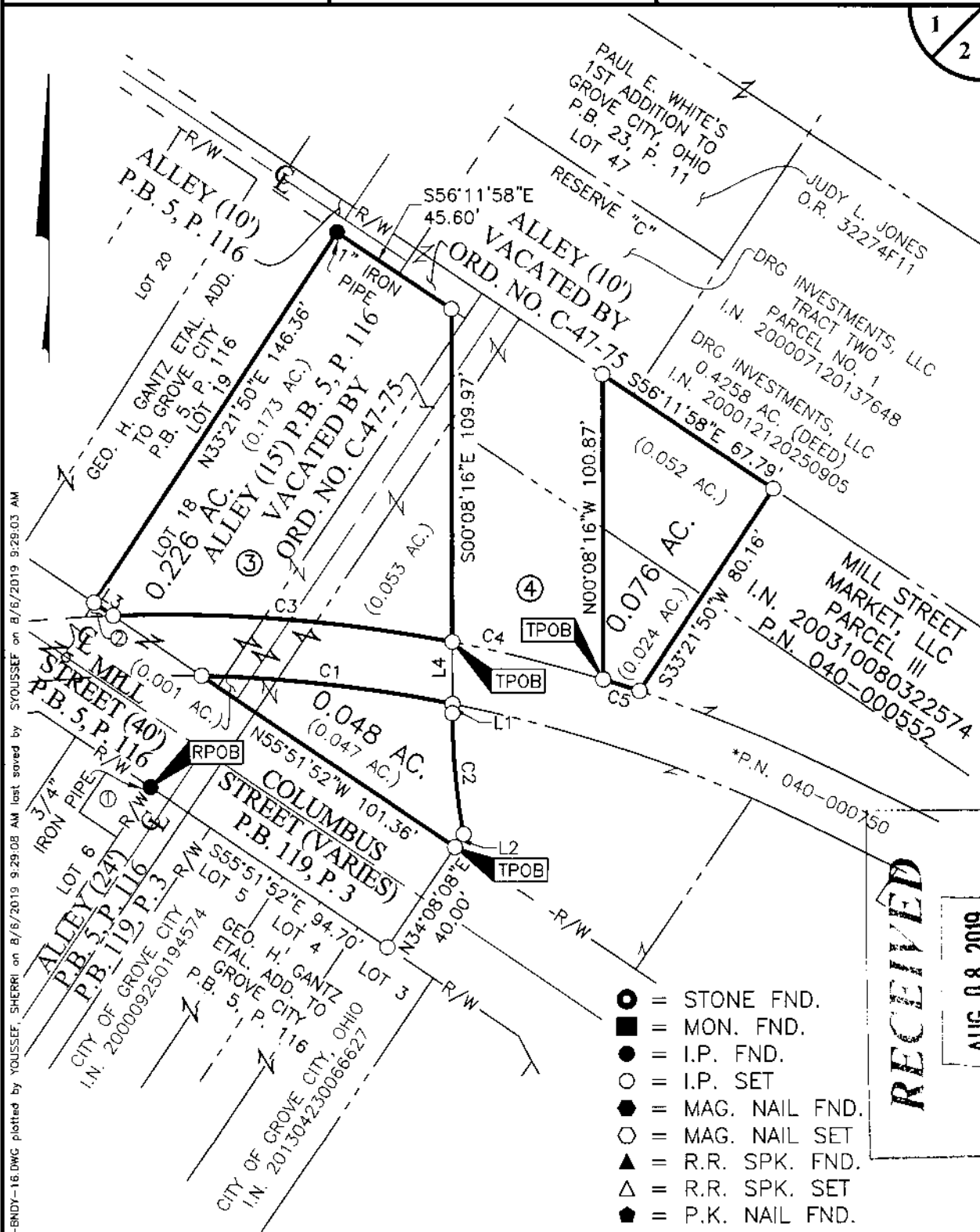
VIRGINIA MILITARY SURVEY NUMBER 1388

CITY OF GROVE CITY, COUNTY OF FRANKLIN, STATE OF OHIO

Date: August 6, 2019

Job No: 2016-0121

Scale: 1" = 50'

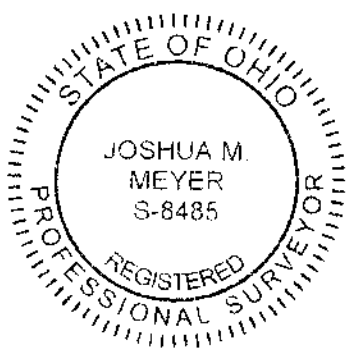
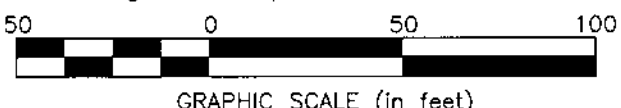


J:\20160121\DWG\04SHEETS\BOUNDARY\20160121-VS-BNDY-16.DWG plotted by YOUSSEF on 8/6/2019 9:29:03 AM
 Xrefs:

RECEIVED
 AUG 08 2019
 Franklin County Engineer
 Cornell R. Robinson, P.E., P.S.

- = STONE FND.
- = MON. FND.
- = I.P. FND.
- = I.P. SET
- = MAG. NAIL FND.
- = MAG. NAIL SET
- ▲ = R.R. SPK. FND.
- △ = R.R. SPK. SET
- = P.K. NAIL FND.

I.P. Set are 13/16" I.D. iron pipes 30" long with cap inscribed EMHT INC.



By Joshua M. Meyer
 Professional Surveyor No. 8485
 Date 8-6-2019



Evans, Mechwart, Hambleton & Nilon, Inc.
 Engineers • Surveyors • Planners • Scientists
 5500 New Albany Road, Columbus, OH 43054
 Phone: 614.775.4500 Toll Free: 888.775.3648
 emht.com

SURVEY OF ACREAGE PARCELS

VIRGINIA MILITARY SURVEY NUMBER 1388

CITY OF GROVE CITY, COUNTY OF FRANKLIN, STATE OF OHIO

Date: August 6, 2019

Job No: 2016-0121

Scale: 1" = 50'

*BALTIMORE AND OHIO RAILWAY BY
 D.B. 592, P.1, NOW KNOWN AS CSX
 TRANSPORTATION, INC., SUCCESSOR BY
 MERGER, WHOSE MERGER DOCUMENTS
 WERE RECORDED IN O.R. 13276A16
 AND O.R. 13276B15, AND
 RE-RECORDED IN O.R. 13283G13
 ORIGINALLY CONVEYED TO THE
 COLUMBUS AND CINCINNATI MIDLAND
 RAILROAD CO. D.B. 184, P. 540

① COLUMBIA GAS OF OHIO, INC.
 PARCEL 43
 D.B. 2542, P. 456
 P.N. 040-000288

② CITY OF GROVE CITY, OHIO
 21,431 SQ. FT. (DEED)
 I.N. 201503310040283

③ MILL STREET MARKET, LLC
 PARCEL IV
 I.N. 200310080322574
 P.N. 040-000479

④ MILL STREET MARKET, LLC
 PARCEL I
 1.277 AC. (DEED)
 I.N. 200310080322574
 P.N. 040-000070

SURVEY NOTE:

This survey was prepared using documents of record,
 prior plats of survey, and observed evidence located
 by an actual field survey in May 2002, June 2010,
 October 2013, October 2014 and November 2016.

CURVE TABLE

CURVE	DELTA	RADIUS	ARC	CH. BEARING	CH. DIST.
C1	9°58'43"	480.51'	83.68'	S83°35'11"E	83.58'
C2	10°17'09"	225.00'	40.39'	S05°16'50"E	40.34'
C3	12°55'13"	500.51'	112.87'	N85°31'28"W	112.63'
C4	5°54'08"	500.51'	51.56'	S76°06'47"E	51.54'
C5	1°26'28"	500.51'	12.59'	N72°26'29"W	12.59'

LINE TABLE

LINE	BEARING	DISTANCE
L1	S00°08'16"E	3.13'
L2	S34°07'35"W	5.13'
L3	N55°51'52"W	7.69'
L4	N00°08'16"W	20.40'

RECEIVED

AUG 08 2019

Franklin County Engineer
 Cornell R. Robertson, P.E., P.S.

BASIS OF BEARINGS:

The bearings shown on this plat are based on the Ohio State Plane
 Coordinate System, South Zone, NAD83 (CORS96). Said bearings
 originated from a field traverse which was tied (referenced) to said
 coordinate system by GPS observations and observations of selected
 CORS base stations in the National Spatial Reference System. The
 portion of the southerly right-of-way line of Mill Street, having a
 bearing of South 55° 51' 52" East, is designated the "basis of
 bearing" for this survey.

J:\20160121\DWG\045\SHEETS\BOUNDARY\20160121-VS-BNDY-16.DWG plotted by YOUSSEF on 8/6/2019 9:29:22 AM last saved by YOUSSEF on 8/6/2019 9:29:17 AM