



Evans, Mechwart, Hambleton & Tilton, Inc.
 Engineers • Surveyors • Planners • Scientists
 5500 New Albany Road, Columbus, OH 43054
 Phone: 614.775.4500 Toll Free: 888.775.3648
 emht.com

SURVEY OF ACREAGE PARCEL

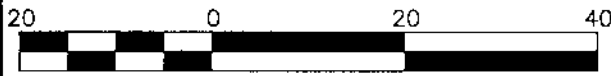
VIRGINIA MILITARY SURVEY NUMBER 1388

CITY OF GROVE CITY, COUNTY OF FRANKLIN, STATE OF OHIO

Date: August 6, 2019

Job No: 2016-0121

Scale: 1" = 20'

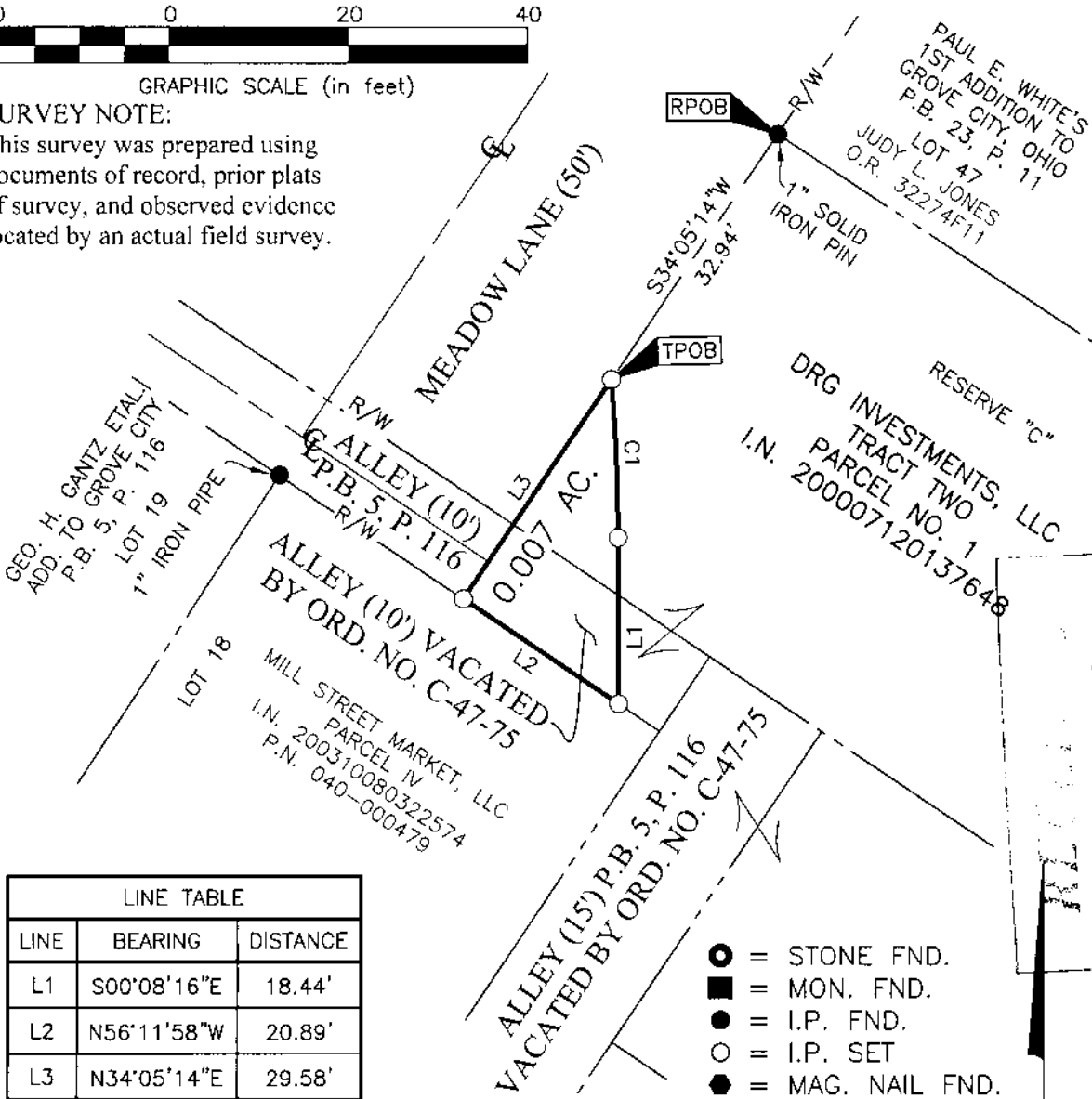


GRAPHIC SCALE (in feet)

SURVEY NOTE:

This survey was prepared using documents of record, prior plats of survey, and observed evidence located by an actual field survey.

J:\20160121\DWG\04SHEETS\BOUNDARY\20160121-VS-BNDY-18.DWG plotted by YOUSSEF, SHERRI on 8/6/2019 9:30:55 AM last saved by SYOUSSEF on 8/6/2019 9:30:48 AM Xrefs:



LINE TABLE		
LINE	BEARING	DISTANCE
L1	S00°08'16"E	18.44'
L2	N56°11'58"W	20.89'
L3	N34°05'14"E	29.58'

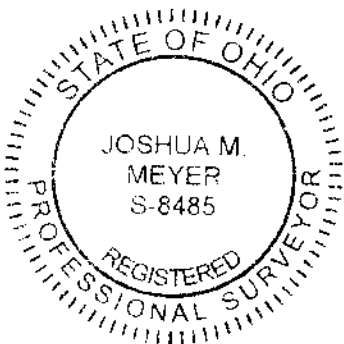
BASIS OF BEARINGS:

The bearings shown on this plat are based on the Ohio State Plane Coordinate System, South Zone, NAD83 (CORS96). Said bearings originated from a field traverse which was tied (referenced) to said coordinate system by GPS observations and observations of selected CORS base stations in the National Spatial Reference System. The portion of the southerly right-of-way line of Mill Street, having a bearing of South 55° 51' 52" East, is designated the "basis of bearing" for this survey.

- = STONE FND.
- = MON. FND.
- = I.P. FND.
- = I.P. SET
- = MAG. NAIL FND.
- = MAG. NAIL SET
- ▲ = R.R. SPK. FND.
- △ = R.R. SPK. SET
- = P.K. NAIL FND.

I.P. Set are 13/16" I.D. iron pipes 30" long with cap inscribed EMHT INC.

CURVE TABLE					
CURVE	DELTA	RADIUS	ARC	CH. BEARING	CH. DIST.
C1	4°30'23"	225.00'	17.70'	S02°23'27"E	17.69'



By Joshua M. Meyer
 Professional Surveyor No. 8485

8-6-2019
 Date

AUG 08 2019
 Franklin County Engineer
 Cornell K. Robertson, P.L.P.S.