



Evans, Mechwart, Hambleton & Tilton, Inc.  
 Engineers • Surveyors • Planners • Scientists  
 5500 New Albany Road, Columbus, OH 43054  
 Phone: 614.775.4500 Toll Free: 866.775.3648  
 emht.com

# SURVEY OF ACREAGE PARCEL

VIRGINIA MILITARY SURVEY NUMBER 1388

CITY OF GROVE CITY, COUNTY OF FRANKLIN, STATE OF OHIO

Date: August 6, 2019

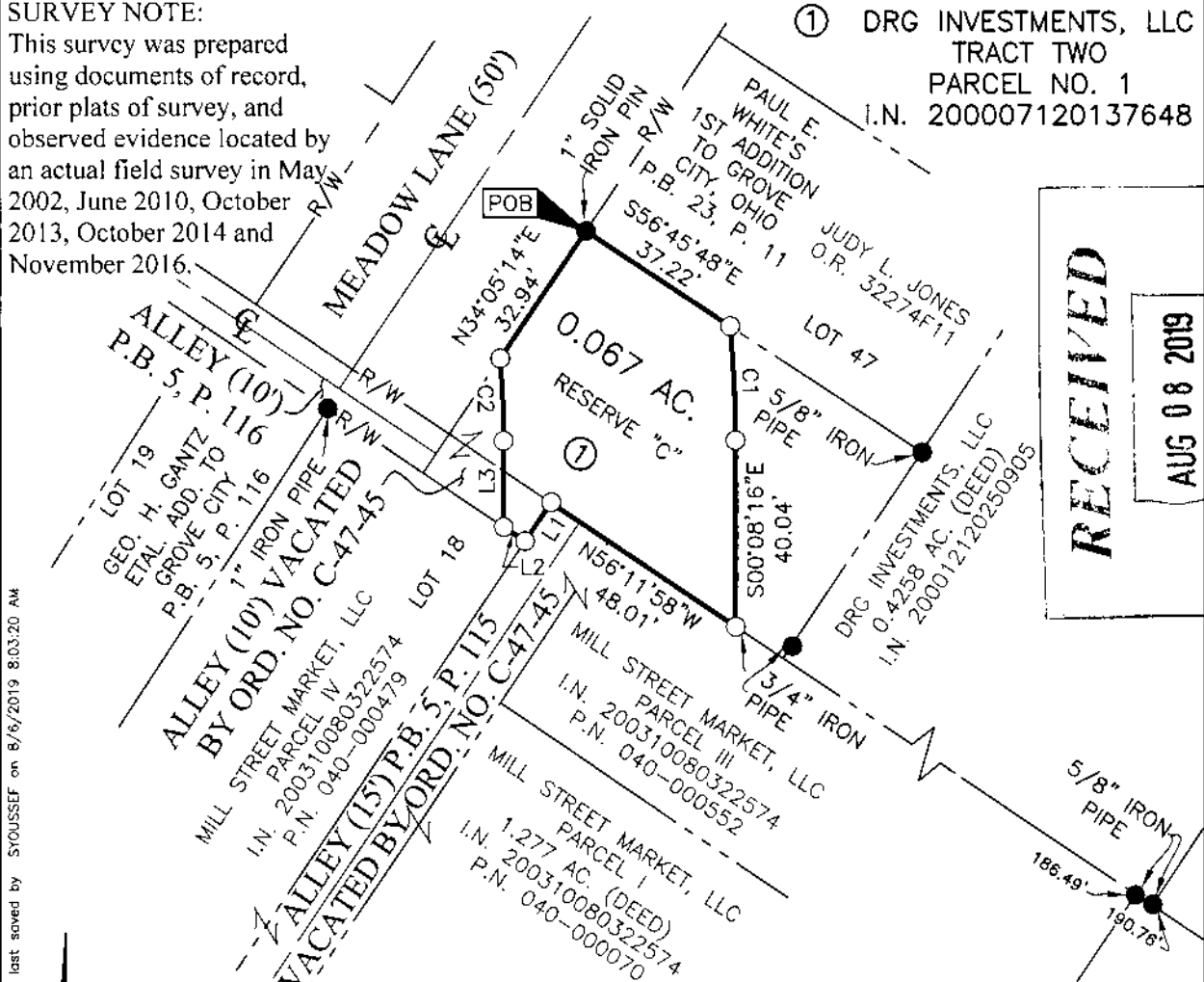
Job No: 2016-0121

Scale: 1" = 40'

**SURVEY NOTE:**

This survey was prepared using documents of record, prior plats of survey, and observed evidence located by an actual field survey in May 2002, June 2010, October 2013, October 2014 and November 2016.

① DRG INVESTMENTS, LLC  
 TRACT TWO  
 PARCEL NO. 1  
 I.N. 200007120137648



**RECEIVED**  
 AUG 08 2019  
 Franklin County Engineer  
 Connel R. Robertson, P.L.P.S.

J:\20160121\DWG\04SHEETS\BOUNDARY\20160121-VS-BNDY-12.DWG plotted by YOUSSEF, SHERRI on 8/6/2019 9:26:00 AM last saved by SYOUSSEF on 8/6/2019 8:03:20 AM

- = STONE FND.
- = MON. FND.
- = I.P. FND.
- = I.P. SET
- = MAG. NAIL FND.
- = MAG. NAIL SET
- ▲ = R.R. SPK. FND.
- △ = R.R. SPK. SET
- = P.K. NAIL FND.

I.P. Set are 13/16" I.D. iron pipes 30" long with cap inscribed EMHT INC.

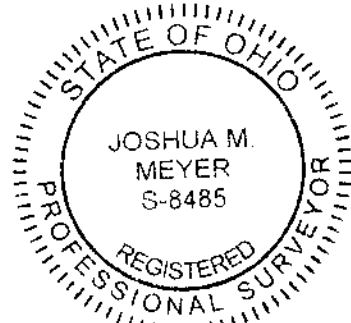


GRAPHIC SCALE (in feet)

**BASIS OF BEARINGS:**  
 The bearings shown on this plat are based on the Ohio State Plane Coordinate System, South Zone, NAD83 (CORS96). Said bearings originated from a field traverse which was tied (referenced) to said coordinate system by GPS observations and observations of selected CORS base stations in the National Spatial Reference System. The portion of the southerly right-of-way line of Mill Street, having a bearing of South 55° 51' 52" East, is designated the "basis of bearing" for this survey.

CURVE TABLE					
CURVE	DELTA	RADIUS	ARC	CH. BEARING	CH. DIST.
C1	5°05'52"	275.00'	24.47'	S02°41'12"E	24.46'
C2	4°30'23"	225.00'	17.70'	N02°23'27"W	17.69'

LINE TABLE		
LINE	BEARING	DISTANCE
L1	S33°57'23"W	10.00'
L2	N56°11'58"W	5.50'
L3	N00°08'16"W	18.44'



By Joshua M. Meyer  
 Professional Surveyor No. 8485

8-6-2019  
 Date