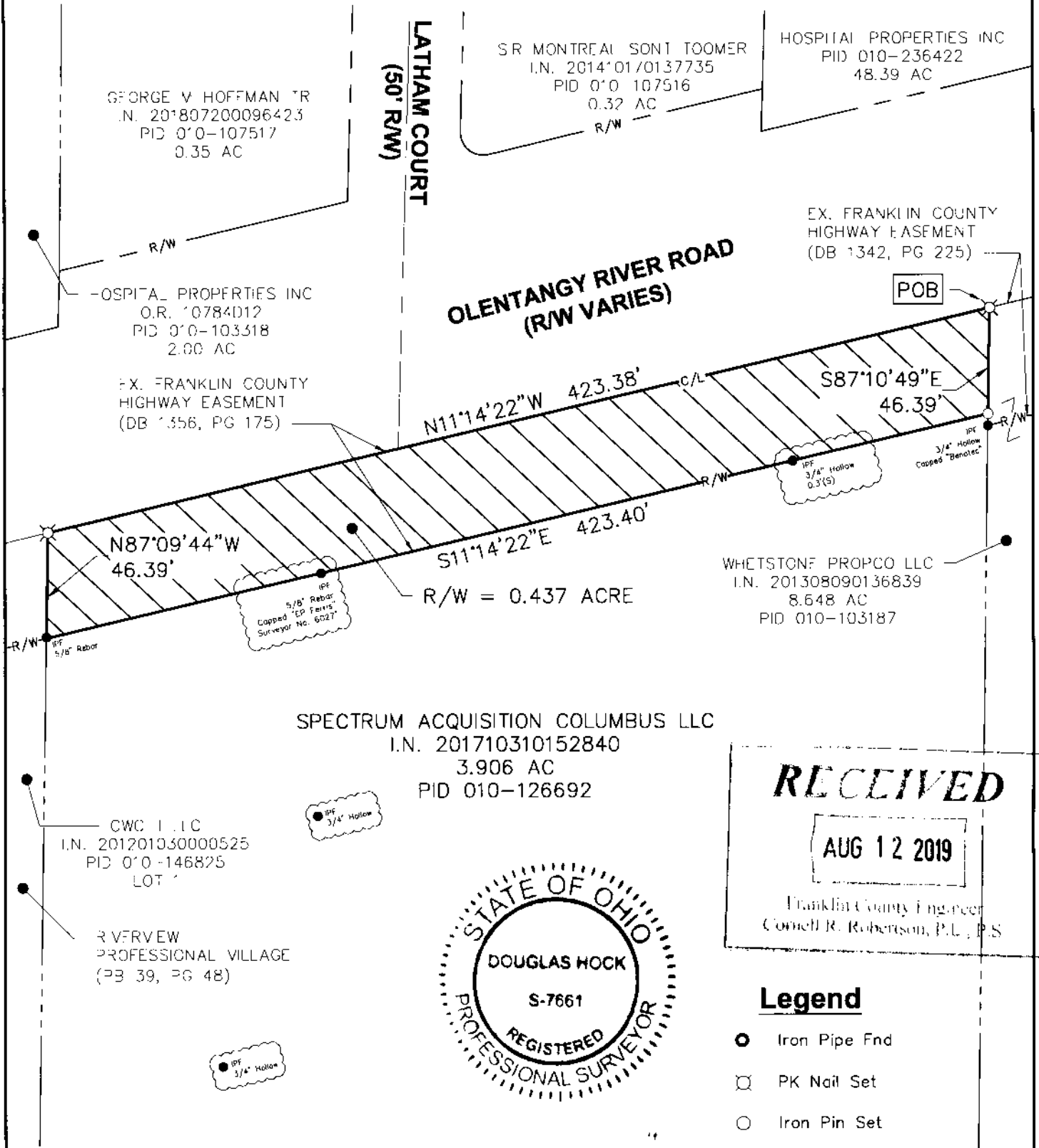


Right-of-Way Dedication ~ 0.437 ACRE

City of Columbus, Franklin County, Ohio
Farm Lot 13, Quarter Township 2, Township 1, Range 18,
United States Military District



SPECTRUM ACQUISITION COLUMBUS LLC
I.N. 201710310152840
3.906 AC
PID 010-126692

WHETSTONE PROPCO LLC
I.N. 201308090136839
8.648 AC
PID 010-103187

GEORGE V HOFFMAN TR
I.N. 201807200096423
PID 010-107517
0.35 AC

S.R. MONTREAL SONT TOOMER
I.N. 201401010137735
PID 010 107516
0.32 AC
R/W

HOSPITAL PROPERTIES INC
PID 010-236422
48.39 AC

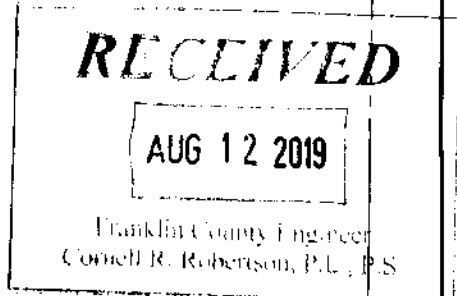
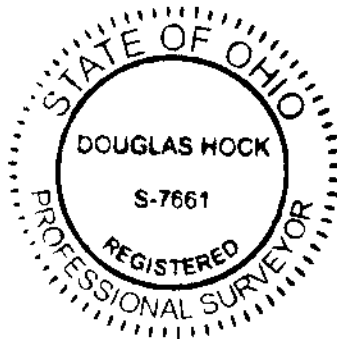
HOSPITAL PROPERTIES INC
O.R. 10784012
PID 010-103318
2.00 AC

EX. FRANKLIN COUNTY
HIGHWAY EASEMENT
(DB 1356, PG 175)

EX. FRANKLIN COUNTY
HIGHWAY EASEMENT
(DB 1342, PG 225)

CWC LLC
I.N. 201201030000525
PID 010-146825
LOT 1

RIVERVIEW
PROFESSIONAL VILLAGE
(PB 39, PG 48)



Legend

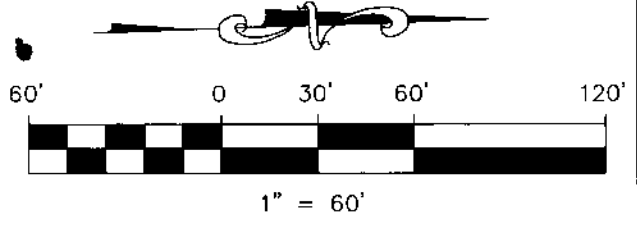
- Iron Pipe End
- ⊗ PK Nail Set
- Iron Pin Set

● I.P.E. = monuments shown with a cloud around them signify monuments that were found on old property lines.
○ I.P.E. 3/4" hollow

This exhibit is created from information obtained from the Franklin County Auditor's Office and the Franklin County Recorder's Office and information obtained from an actual field survey completed in May of 2018.

All iron pins set are 3/4" diameter rebar, 30" long with plastic cap inscribed "Advanced 7661".

The Basis of Bearings used in this description are based upon the NAD83 Ohio State Plane Coordinate System, South Zone (NSRS 2007) which determines the bearing for the easterly right-of-way line for Olentangy River Road to be N11°14'22"W.



ADVANCED CIVIL DESIGN, INC.

[Signature]
Douglas R. Hock, P.S. 7661

8/8/19
Date:

DRAWN BY: JRR	JOB NO.: 17-0013-565
DATE: 08/08/19	CHECKED BY: DRB

422 Beecher Road
Gahanna, Ohio 43230
ph 614.428.7750
fax 614.428.7755

ADVANCED CIVIL DESIGN ENGINEERS SURVEYORS