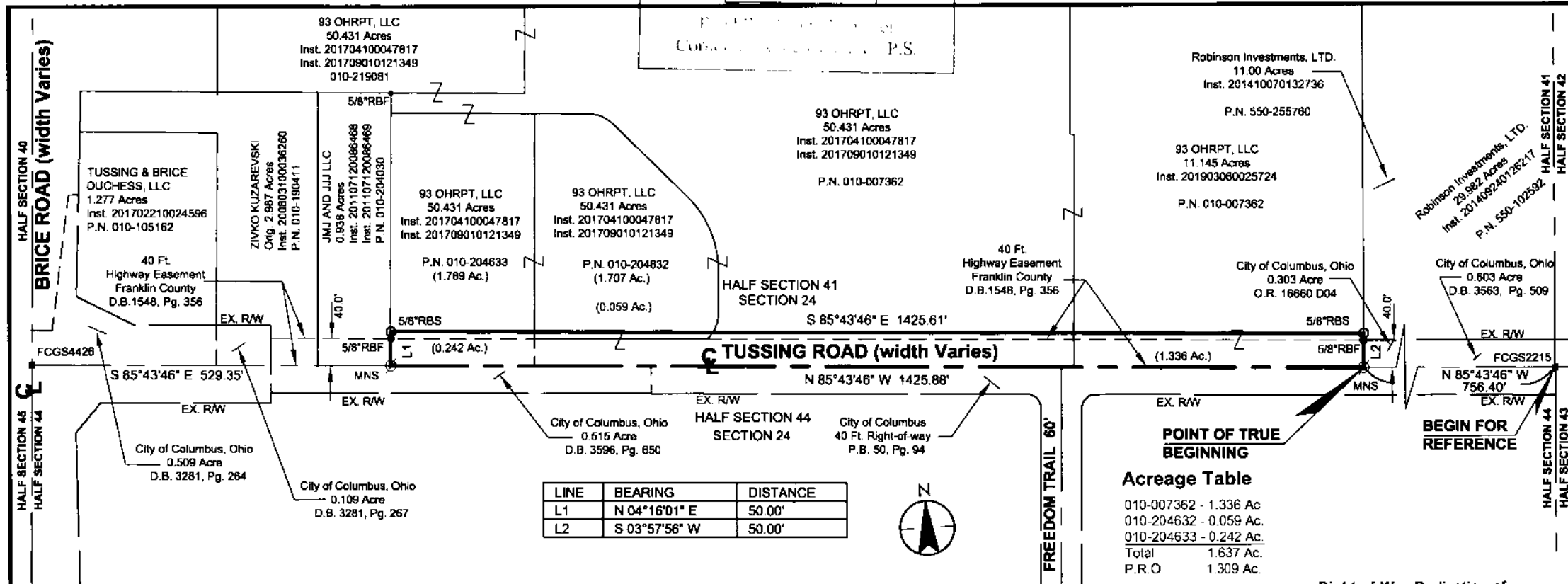


RECEIVED

AUG 13 2019

K-5-C



LINE	BEARING	DISTANCE
L1	N 04°16'01\" E	50.00'
L2	S 03°57'56\" W	50.00'



POINT OF TRUE BEGINNING

Acreage Table

010-007362	- 1.336 Ac
010-204632	- 0.059 Ac.
010-204633	- 0.242 Ac.
Total	1.637 Ac.
P.R.O	1.309 Ac.

Right-of-Way Dedication of

1.637 Acres
Lying in
Half Section 41, Section 24
Twp. 12 N, Rg. 21 W
Refugee Lands
City of Columbus, Franklin County, Ohio

Prepared by:



1500 Lake Shore Drive
Columbus, Ohio 43204
Phone: (614) 486-4389
Fax: (614) 486-4387

Copyright Reserved
The Contractor shall verify and be responsible for all dimensions. DO NOT scale the drawing - any errors or omissions shall be reported to Stantec within 10 days.
The Copyrights to all designs and drawings are the property of Stantec. Reproduction or use for any purposes other than that authorized by Stantec is forbidden.

BASIS OF BEARINGS:

The bearings shown hereon are based on the Grid Bearing of North 85°43'46\" West between Franklin County Engineer's Monuments FCGS 2215 and FCGS 4426 as determined by a GPS network of field observations performed in August, 2019. (State Plane Coordinate System, South Zone, 2011 adjustment).

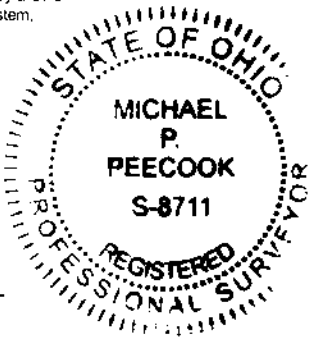
CERTIFICATION:

I hereby certify that this survey shown on the attached plat was prepared from an on the ground survey in August 2019, made under my direct supervision and that it and the information, courses and distances as shown are correct to the best of my knowledge.

STANTEC CONSULTING SERVICES INC.

(Signature)
Michael P. Peacock
Date: 08/12/19

Professional Surveyor No. S-8711



LEGEND

- RBS Rebar Set, 5/8 inch, 30 inches in length, with a yellow cap stamped the name "STANTEC".
- RBF Rebar Found
- MON Franklin County Monument Found
- MNS Magnetic Nail Set

SCALE IN FEET
Scale: 1 inch = 200 Feet