

**LEGEND**

- ⊙ EXISTING CONCRETE HIGHWAY MONUMENT FOUND
- IRON PIN FOUND (AS NOTED)
- IRON PIN SET, 5/8" REBAR, 30" LONG WITH AN ORANGE PLASTIC CAP STAMPED "IBI GROUP, S-6872/S-7740"

**BEARING REFERENCE**

BEARINGS HEREIN ARE BASED ON THE OHIO STATE PLANE COORDINATE SYSTEM, SOUTH ZONE, NAD 83 (2011) AND GPS OBSERVATIONS OF THE FRANKLIN COUNTY GEODETIC CONTROL MONUMENTATION ESTABLISHING A BEARING OF S 87° 00' 32" E ON THE SOUTHERLY PROPERTY LINE OF SAID LOT 13 OF PLESENTON PLACE ADDITION NO. 2.

PAUL J. FILING III  
O.R.V. 25413, PG. 616  
1.224 ACRE  
P.N. 250-000828  
PARCEL 2

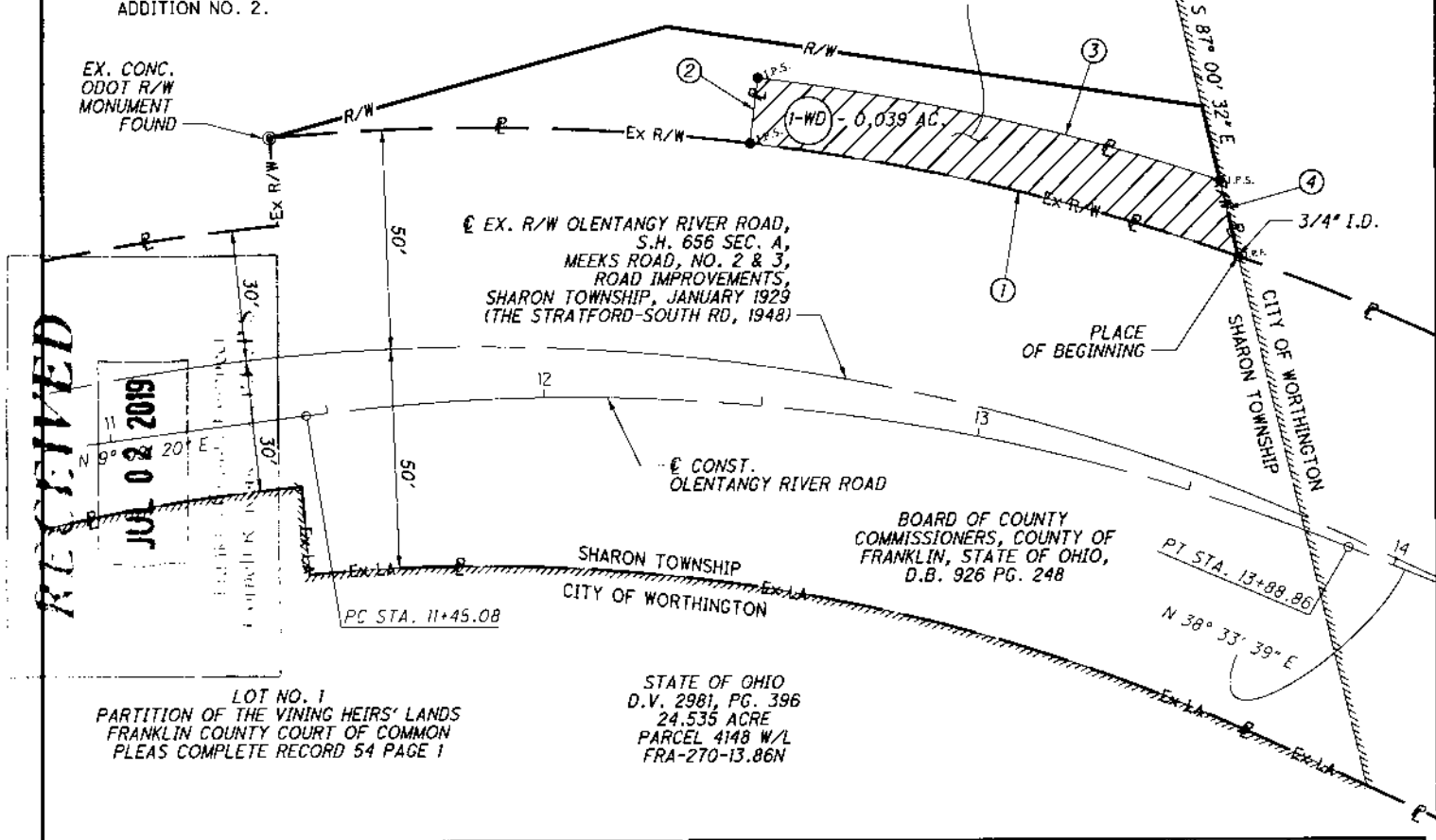
PLESENTON PLACE  
ADDITION No. 2  
P.B. 30, PG. 41

ALEXANDER BOBROV &  
LAURA MILLER  
I.N. 201504240053013  
P.N. 100-005318  
(PART OF LOT 13)

HUNTINGTON NATIONAL BANK, TRUSTEE  
UNDER THE LAST WILL TESTAMENT OF  
HERMAN P. JEFFERS  
0.039 ACRE  
D.B. 2120, PG. 175  
(119.89 ACRES)

CHAD CRAMER  
I.N. 201703030030086  
(SEE I.N. 201802230025316)  
0.419 ACRE  
P.N. 100-006761  
(PART OF LOT 13)

EX. CONC.  
ODOT R/W  
MONUMENT  
FOUND



RECEIVED

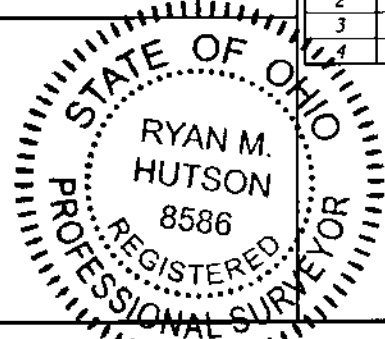
JUL 02 2019

LOT NO. 1  
PARTITION OF THE VINING HEIRS' LANDS  
FRANKLIN COUNTY COURT OF COMMON  
PLEAS COMPLETE RECORD 54 PAGE 1

STATE OF OHIO  
D.V. 2981, PG. 396  
24.535 ACRE  
PARCEL 4148 W/L  
FRA-270-13.86N

REF. NO.	BEARING	DISTANCE	REF. NO.	CHORD BEARING	CHORD DISTANCE	ARC DELTA	ARC RADIUS	ARC DISTANCE
1	ON CURVE	-	1	S 29° 39' 24" W	114.87'	12° 31' 35"	526.47'	115.10'
2	N 66° 36' 24" W	15.00'	2	-	-	-	-	-
3	ON CURVE	-	3	N 29° 08' 44" E	108.54'	11° 30' 16"	541.47'	108.72'
4	S 87° 00' 32" E	17.77'	4	-	-	-	-	-

SURVEYORS SEAL



*Ryan M. Hutson*  
Ryan M. Hutson,  
Professional Land Surveyor 8586

7-1-19  
Date:

**IBI GROUP**  
8101 North High Street, Suite 100  
Columbus, OH 43235 USA  
tel 614 818 4900 fax 614 818 4901  
ibigroup.com

**EXHIBIT B  
PARCEL 1-WD**  
UNITED STATES MILITARY DISTRICT  
QUARTER TOWNSHIP 3, TOWNSHIP 2 NORTH, RANGE 18 WEST  
SHARON TOWNSHIP, COUNTY OF FRANKLIN, STATE OF OHIO

DATE: 6/20/2019  
SCALE: 1" = 40'  
1/1