

# SURVEY EXHIBIT OF 0.035 ACRE TRACT

PART OF LAND OF ORTHOPAEDIC

MEDICAL PROPERTIES, LLC

STATE OF OHIO, COUNTY OF FRANKLIN,

CITY OF UPPER ARLINGTON

LOT 1, FRACTIONAL TOWNSHIP 2, TOWNSHIP 1 NORTH,  
RANGE 19 WEST, UNITED STATE MILITARY LANDS

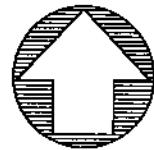
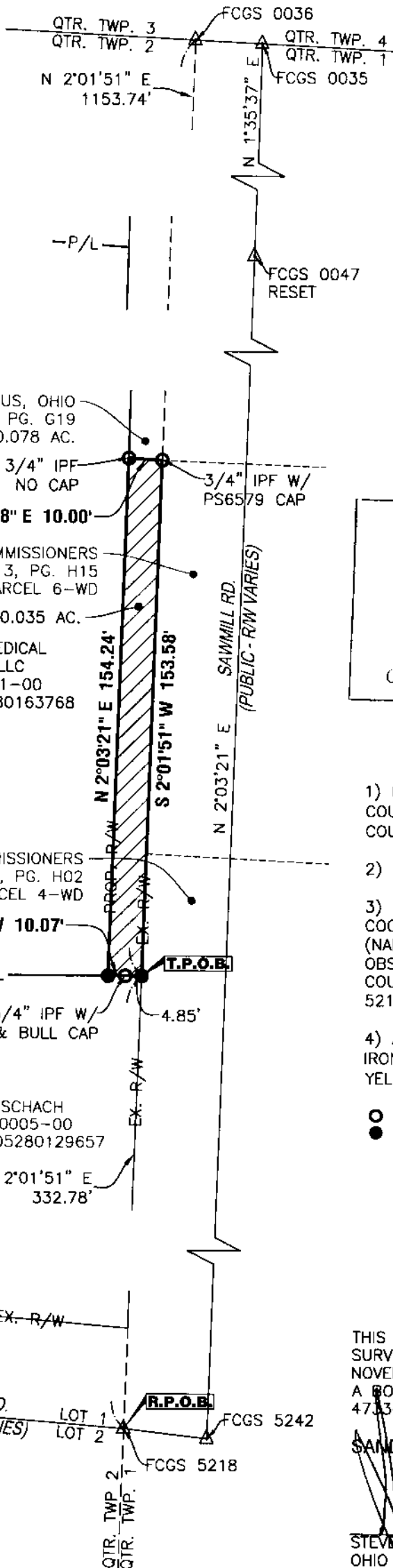


OFFICES

128 East Main Street  
Logan, Ohio 43138  
740-385-2140

1495 Old Henderson Road  
Columbus, Ohio 43220  
614-459-6992

507 Main Street  
Zanesville, Ohio 43701  
740-450-1640



NORTH

GRAPHIC SCALE



1" = 40'

**RECEIVED**

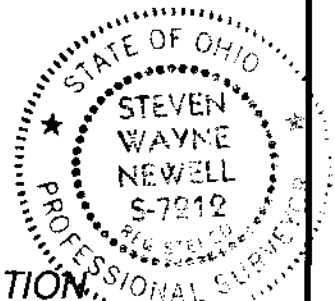
JUL 11 2019

Franklin County Engineer  
Cornell R. Roberson, P.E., P.S.

### SURVEYOR'S NOTES

- 1) BASED ON RECORDS ON FILE AT THE FRANKLIN COUNTY RECORDER'S OFFICE AND THE FRANKLIN COUNTY ENGINEER'S OFFICE.
- 2) REFERENCES: ALL DOCUMENTS NOTED HEREON.
- 3) BEARINGS ARE BASED ON THE OHIO STATE PLANE COORDINATE SYSTEM - OHIO SOUTH ZONE (NAD83-NSRS 2007 ADJUSTMENT) BY GPS OBSERVATION, WITH THE BEARING BETWEEN FRANKLIN COUNTY ENGINEER SURVEY CONTROL MONUMENTS FCGS 5218 & FCGS 0036 RESET BEING N 02°01'51" E.
- 4) ALL IRON PINS SET ARE 3/4" INSIDE DIAMETER IRON PIPES, 30" IN LENGTH WITH A 1" DIAMETER YELLOW CAP STAMPED "SANDS DECKER."

- IRON PIN FOUND
- IRON PIN SET



### CERTIFICATION

THIS DRAWING IS REPRESENTATIVE OF AN ACTUAL FIELD SURVEY PERFORMED UNDER MY DIRECT SUPERVISION IN NOVEMBER, 2017. THIS DRAWING IS REPRESENTATIVE OF A BOUNDARY SURVEY IN CONFORMANCE WITH OAC 47.33-37 STANDARDS FOR BOUNDARY SURVEYS.

SANDS DECKER CPS

STEVEN W. NEWELL  
OHIO PROFESSIONAL  
SURVEYOR 7212

07/09/2019  
DATE