



Evans, Mechwart, Hambleton & Tilton, Inc.
 Engineers • Surveyors • Planners • Scientists
 5500 New Albany Road, Columbus, OH 43054
 Phone: 614.775.4500 Toll Free: 888.775.3648

emht.com

SURVEY OF ACREAGE PARCEL

VIRGINIA MILITARY SURVEY NO. 6115
 CITY OF GROVE CITY, COUNTY OF FRANKLIN, STATE OF OHIO

Date: April 30, 2019

Scale: 1" = 60'

Job No: 2017-1174

- = STONE FND.
- = MON. FND.
- = I.P. FND.
- = I.P. SET
- = MAG. NAIL FND.
- = MAG. NAIL SET
- ▲ = R.R. SPK. FND.
- △ = R.R. SPK. SET
- = P.K. NAIL FND.

BASIS OF BEARINGS:

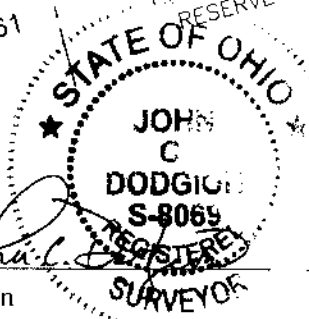
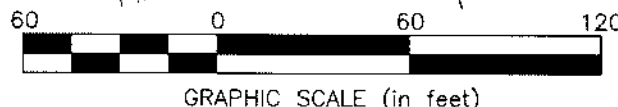
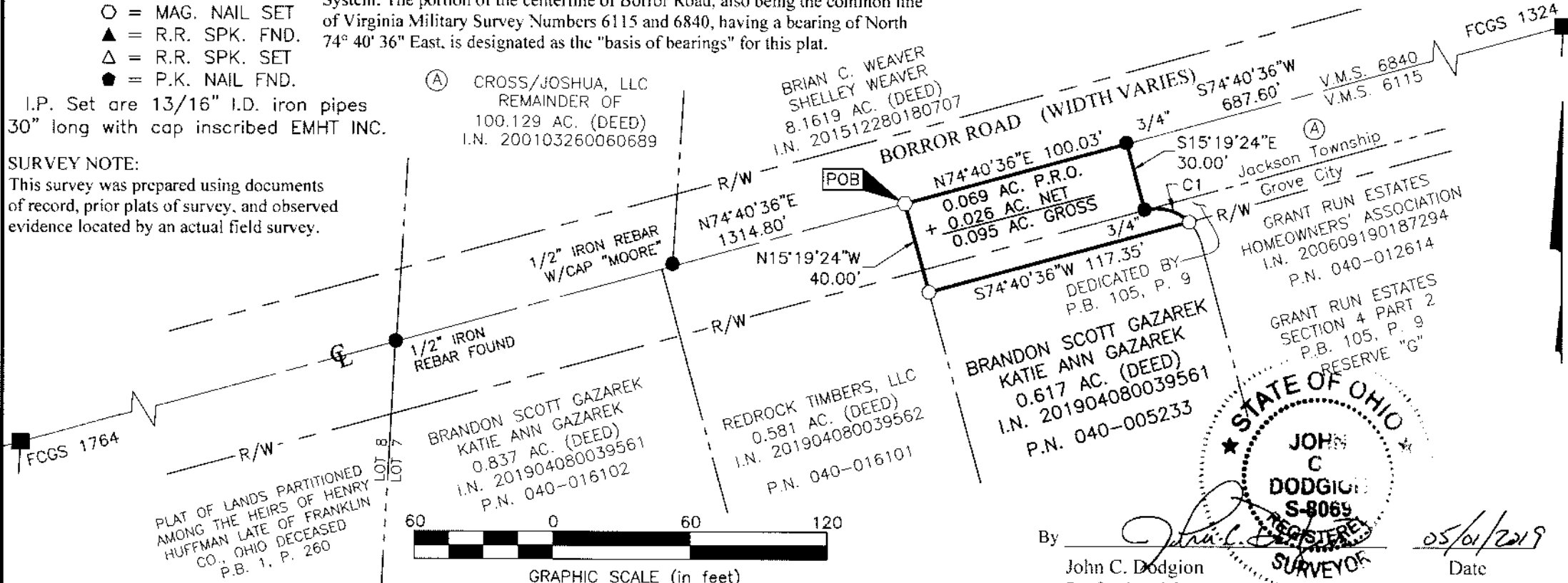
The bearings shown hereon are based on the Ohio State Plane Coordinate System, South Zone, NAD83 (2011). Said bearings originated from a field traverse which was tied (referenced) to said coordinate system by GPS observations and observations of selected CORS base stations in the National Spatial Reference System. The portion of the centerline of Borror Road, also being the common line of Virginia Military Survey Numbers 6115 and 6840, having a bearing of North 74° 40' 36" East, is designated as the "basis of bearings" for this plat.

CURVE TABLE					
CURVE	DELTA	RADIUS	ARC	CH. BEARING	CH. DIST.
C1	60°00'00"	20.00'	20.94'	S75°19'24"E	20.00'

I.P. Set are 13/16" I.D. iron pipes 30" long with cap inscribed EMHT INC.

SURVEY NOTE:

This survey was prepared using documents of record, prior plats of survey, and observed evidence located by an actual field survey.



By John C. Dodgion Date 05/01/2019
 Professional Surveyor No. 8069

J:\20171174\DWG\04SHEETS\BOUNDARY\20171174-VS-BNDY-7C.DWG plotted by GEIGER, STEVEN on 4/29/2019 5:34:29 PM last saved by SGEIGER on 4/29/2019 5:34:11 PM
 Xrefs: GRADING 7-30-18.DWG

RECEIVED

MAY 06 2019

Franklin County Engineer
 Curtiss K. Moberg, P.L.L.P.S.