



Evans, Mechwart, Hambleton & Tilton, Inc.
 Engineers • Surveyors • Planners • Scientists
 5500 New Albany Road, Columbus, OH 43054
 Phone: 614.775.4500 Toll Free: 888.775.3648
 emht.com

SURVEY OF ACREAGE PARCEL

SURVEY NUMBER 6840

VIRGINIA MILITARY DISTRICT

TOWNSHIP OF JACKSON, COUNTY OF FRANKLIN, STATE OF OHIO

Date: October 10, 2018
 Revised: July 31, 2019

Scale: 1" = 100'

Job No: 2017-1174

RECEIVED

JUL 31 2019

Franklin County Engineer
 Cornell R. Roberson, P.E., P.S.

COVENANT CHURCH
 14.588 AC. (DEED)
 I.N. 201905220059836

P.N. 160-003100
 14.588 AC. (AUDITOR)

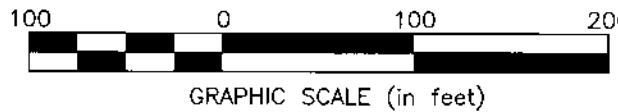
PERPETUAL EASEMENT FOR HIGHWAY PURPOSES
 COUNTY OF FRANKLIN
 D.B. 3414, P. 624

PERPETUAL EASEMENT FOR HIGHWAY PURPOSES
 COUNTY OF FRANKLIN
 D.B. 3414, P. 959

RHM ELLIOTT, LLC
 I.N. 201710030137918
 P.N. 160-000041
 46.12 AC. (AUDITOR)

SEE SHEET 2 OF 3
 MATCHLINE

2.074 AC. GROSS
 -1.273 AC. P.R.O.
 0.801 AC. NET



SOUTHEAST CONSERVATION CLUB, INC.
 D.B. 2100, P. 294

P.N. 160-000275
 128.93 AC. (AUDITOR)

RPOB
 FCGS 1260

FCGS 1947

5/8" REBAR FOUND

BORROR ROAD
 (WIDTH VARIES)

V.M.S. 6840
 V.M.S. 6115

V.M.S. 478
 V.M.S. 6115

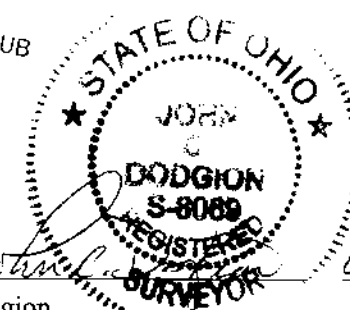
THE SOUTHEAST CONSERVATION CLUB
 159.016 AC. (DEED)
 D.B. 3339, P. 215

P.N. 160-001494
 156.46 AC. (AUDITOR)

LOT 4
 PLAT OF LANDS PARTITIONED AMONG THE HEIRS OF
 HENRY HUFFMAN LATE OF FRANKLIN CO., OHIO
 DECEASED
 P.B. 1, P. 260

LINE TABLE

LINE	BEARING	DISTANCE
L1	S74°30'14"W	55.85'
L2	S74°30'14"W	792.29'
L3	N09°42'22"W	55.34'
L4	N89°24'19"E	18.72'
L5	N74°30'14"E	784.06'
L6	N63°45'50"E	7.79'
L7	S16°16'33"E	51.46'



By John C. Dodgion
 Professional Surveyor No. 8069

Date 07/31/2019



Evans, Mechwart, Hambleton & Tilton, Inc.
 Engineers • Surveyors • Planners • Scientists
 5500 New Albany Road, Columbus, OH 43054
 Phone: 614.775.4500 Toll Free: 888.775.3648
 emht.com

SURVEY OF ACREAGE PARCEL

SURVEY NUMBER 6840

VIRGINIA MILITARY DISTRICT

TOWNSHIP OF JACKSON, COUNTY OF FRANKLIN, STATE OF OHIO

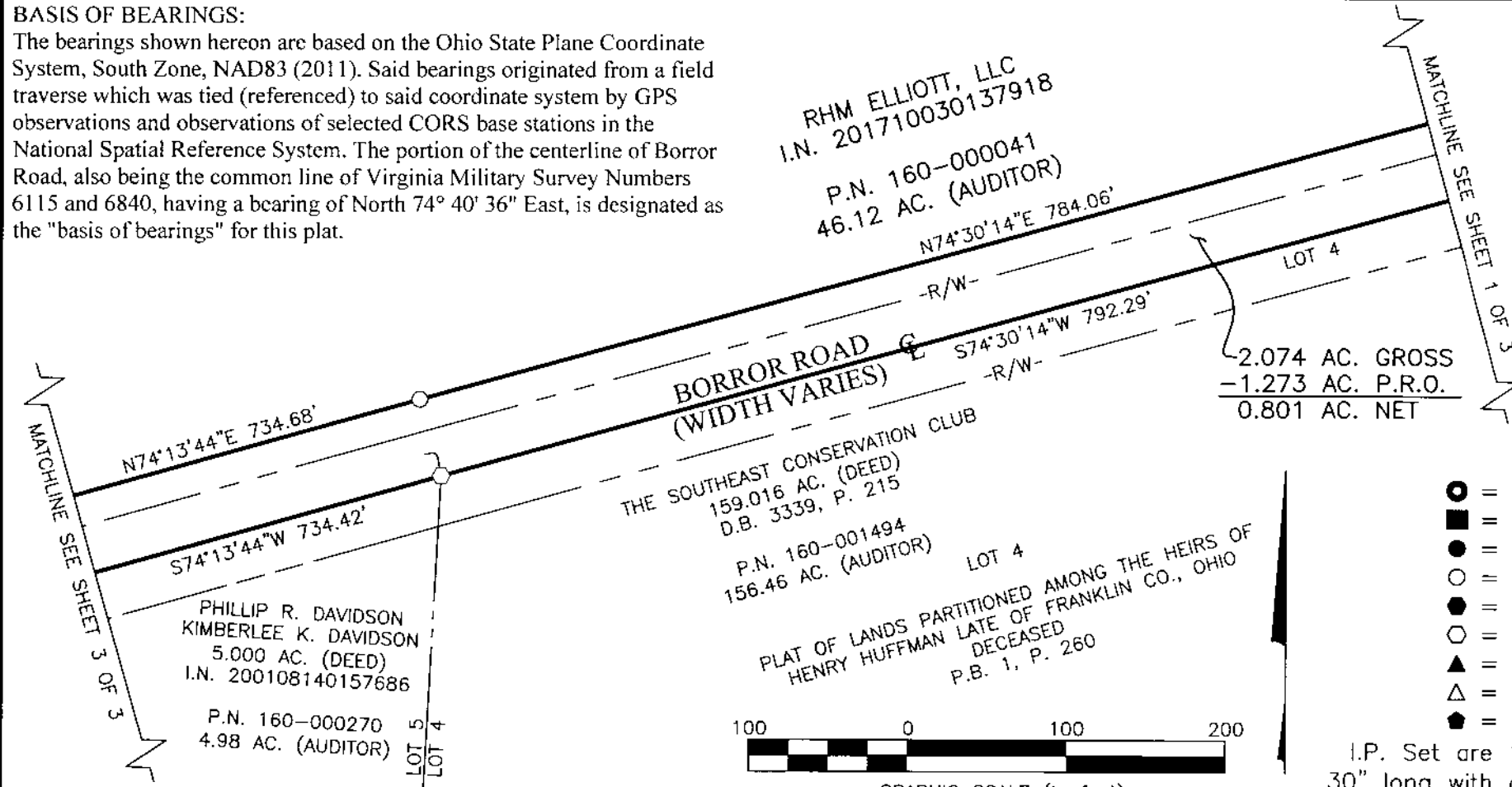
Date: October 10, 2018
 Revised: July 31, 2019

Scale: 1" = 100'

Job No: 2017-1174

BASIS OF BEARINGS:

The bearings shown hereon are based on the Ohio State Plane Coordinate System, South Zone, NAD83 (2011). Said bearings originated from a field traverse which was tied (referenced) to said coordinate system by GPS observations and observations of selected CORS base stations in the National Spatial Reference System. The portion of the centerline of Borror Road, also being the common line of Virginia Military Survey Numbers 6115 and 6840, having a bearing of North 74° 40' 36" East, is designated as the "basis of bearings" for this plat.



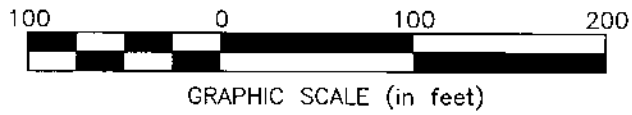
RECEIVED

JUL 31 2019

Franklin County Engineer
 Cornell R. Robertson, P.E., P.S.

- = STONE FND.
- = MON. FND.
- = I.P. FND.
- = I.P. SET
- = MAG. NAIL FND.
- = MAG. NAIL SET
- ▲ = R.R. SPK. FND.
- △ = R.R. SPK. SET
- = P.K. NAIL FND.

I.P. Set are 13/16" I.D. iron pipes 30" long with cap inscribed EMHT INC.





Evans, Mechwart, Hambleton & Tilton, Inc.
 Engineers • Surveyors • Planners • Scientists
 5500 New Albany Road, Columbus, OH 43054
 Phone: 614.775.4500 Toll Free: 888.775.3648
 emht.com

SURVEY OF ACREAGE PARCEL

SURVEY NUMBER 6840

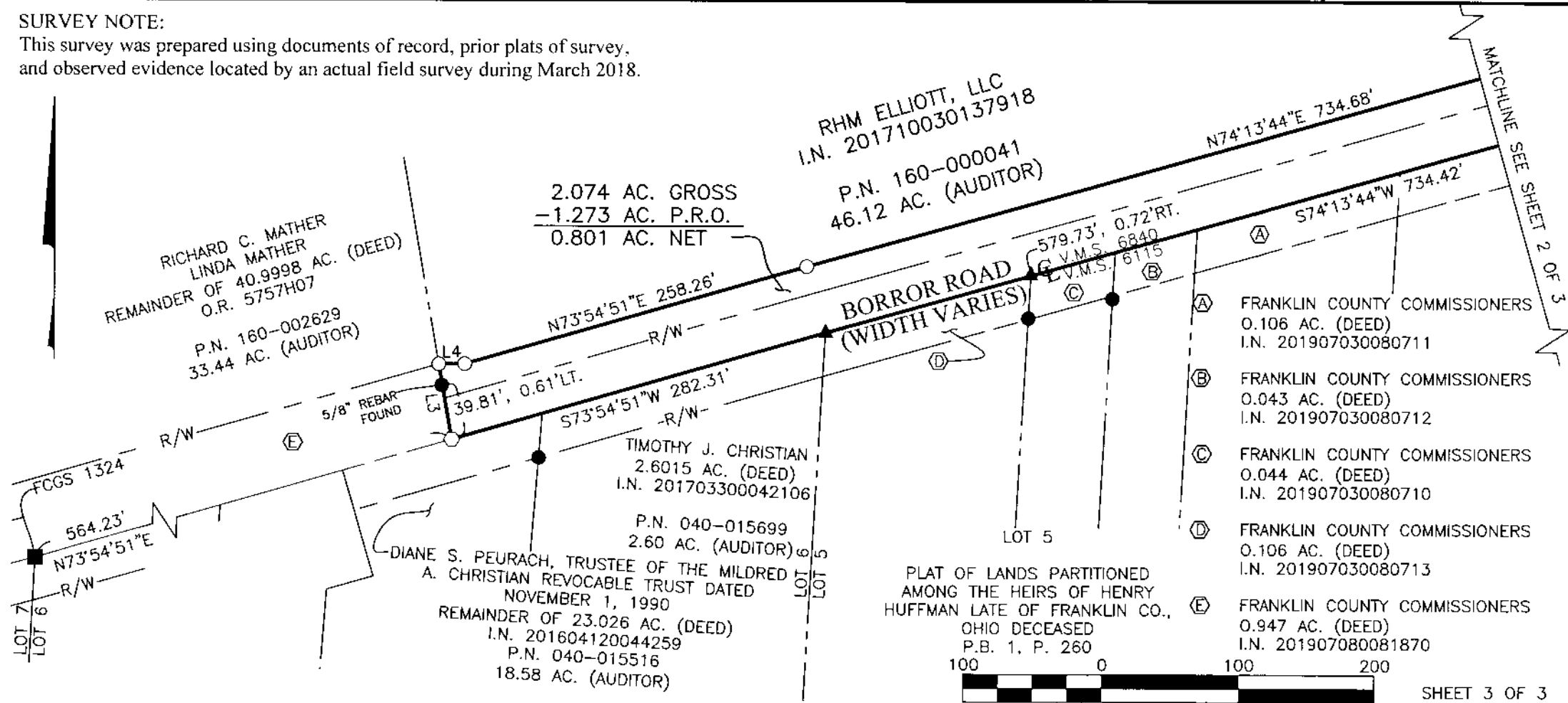
VIRGINIA MILITARY DISTRICT

TOWNSHIP OF JACKSON, COUNTY OF FRANKLIN, STATE OF OHIO

Date: October 10, 2018
 Revised: July 31, 2019
 Scale: 1" = 100'
 Job No: 2017-1174

SURVEY NOTE:

This survey was prepared using documents of record, prior plats of survey, and observed evidence located by an actual field survey during March 2018.



RECEIVED

JUL 31 2019

Franklin County Engineer
 Cornell R. Kishenour, P.E., P.S.