

GROUND LEASE AREA EXHIBIT

QUARTER TOWNSHIP 4, TOWNSHIP 1, RANGE 17

UNITED STATES MILITARY LANDS

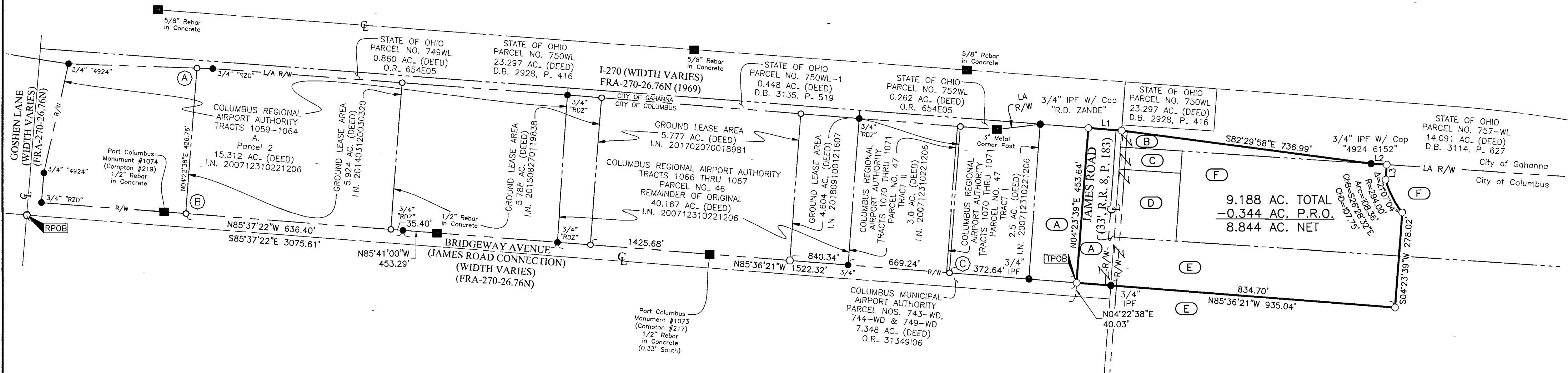
CITY OF COLUMBUS, COUNTY OF FRANKLIN, STATE OF OHIO

RECEIVED

JUN 04 2019

Franklin County Engineer
Concill R. Robertson, P.E., P.S.

| LINE TABLE | | |
|------------|-------------|----------|
| LINE | BEARING | DISTANCE |
| L1 | S85°39'35"E | 98.05' |
| L2 | S86°16'15"E | 45.80' |
| L3 | S04°23'39"W | 43.83' |



SURVEY NOTE:
This survey was prepared using documents of record, prior plats of survey, and observed evidence located by an actual field survey in November of 2013 and January 2019.

BASIS OF BEARINGS:
The bearings shown on this plat are based on the Ohio State Plane Coordinate System, South Zone, NAD83 (1986). Said bearings originated from a field traverse which was tied (referenced) to said coordinate system by GPS observations and observations of selected Franklin County monuments FRANK 65 and FRANK 165. The portion of the centerline of Bridgeway Avenue, having a bearing of N 85° 37' 22" W as shown hereon, is designated the "basis of bearing" for this survey.

| (A) | (B) | (C) | (D) | (E) | (F) |
|--|--|--|--|--|--|
| COLUMBUS REGIONAL AIRPORT AUTHORITY TRACTS 1074 THRU 1075 PARCEL NO. 48 2.5 AC. (DEED) I.N. 200712310221206 P.N. 520-164563 (1.035 AC.) | COLUMBUS MUNICIPAL AIRPORT AUTHORITY 0.409 AC. (DEED) O.R. 21103F05 P.N. 520-263243 (0.409 AC.) | COLUMBUS REGIONAL AIRPORT AUTHORITY TRACT 1078 0.27 AC. (DEED) I.N. 200712310221206 P.N. 520-263245 (0.270 AC.) | COLUMBUS REGIONAL AIRPORT AUTHORITY TRACT 1083 0.82 AC. (DEED) I.N. 200712310221206 P.N. 520-263244 (0.826 AC.) | COLUMBUS REGIONAL AIRPORT AUTHORITY TRACTS 1062-1064 PARCEL NO. 52 I.N. 200712310221206 P.N. 520-164555 (2.800 AC.) | COLUMBUS REGIONAL AIRPORT AUTHORITY 7.957 AC. (DEED) I.N. 200812110178154 P.N. 520-287806 (3.848 AC.) |

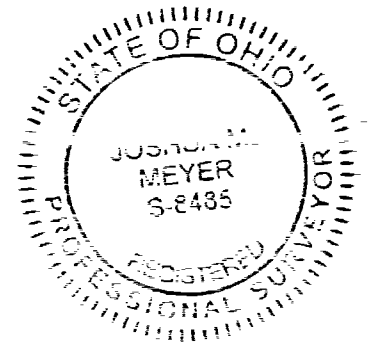
| STATE PLANE COORDINATES (GROUND)* | | PCIA LOCAL COORDINATES | |
|-----------------------------------|---------------------------------|------------------------|----------------------------|
| (A) | N 731609.8090 E 1858425.5775 | (A) | N 8846.9879 E 6427.5179 |
| (B) | N 731184.2917 E 1858393.0069 | (B) | N 8420.2262 E 6428.0869 |
| (C) | N 731013.5204 E 1860625.8618 | (C) | N 8423.3509 E 8667.4605 |
| FRANK 65 | N 731729.451 E 1858861.411 | FRANK 65 | N 9000.0857 E 6852.7277 |
| COC 40-82 | N 730850.320 E 1852899.693 | COC 40-82 | N 7660.7152 E 977.3132 |

*The coordinates shown on this map are based on the Ohio State Plane Coordinate System, South Zone, NAD 83 (1986). Said coordinates originated from a field traverse which was tied (referenced) to said coordinate system by GPS observations of Franklin County Engineering Department monuments FRANK65, and FRANK165. The grid to ground scale factor (1.0000384293) was applied at the location of N 731750.468, E 1857130.533.

- = STONE FND.
- = MON. FND.
- = I.P. FND.
- = I.P. SET
- = MAG. NAIL FND.
- = MAG. NAIL SET
- ▲ = R.R. SPK. FND.
- ▲ = R.R. SPK. SET
- △ = P.K. NAIL FND.

I.P. Set are 13/16" I.D. iron pipes 30" long with cap inscribed EMHT INC.

GRAPHIC SCALE (in feet)



By Joshua M. Meyer
Professional Surveyor No. 8485

5-30-2019
Date

EMHT
Evans, Mechwart, Hambleton & Tilton, Inc.
Engineers • Surveyors • Planners • Scientists
5500 New Albany Road, Columbus, OH 43054
Phone: 614.775.4500 Toll Free: 888.775.3648
emht.com

Date: May 30, 2019

Scale: 1" = 200'

Job No: 2018-1369

Sheet: 1 of 1

| REVISIONS | | |
|-----------|------|-------------|
| MARK | DATE | DESCRIPTION |
| | | |
| | | |