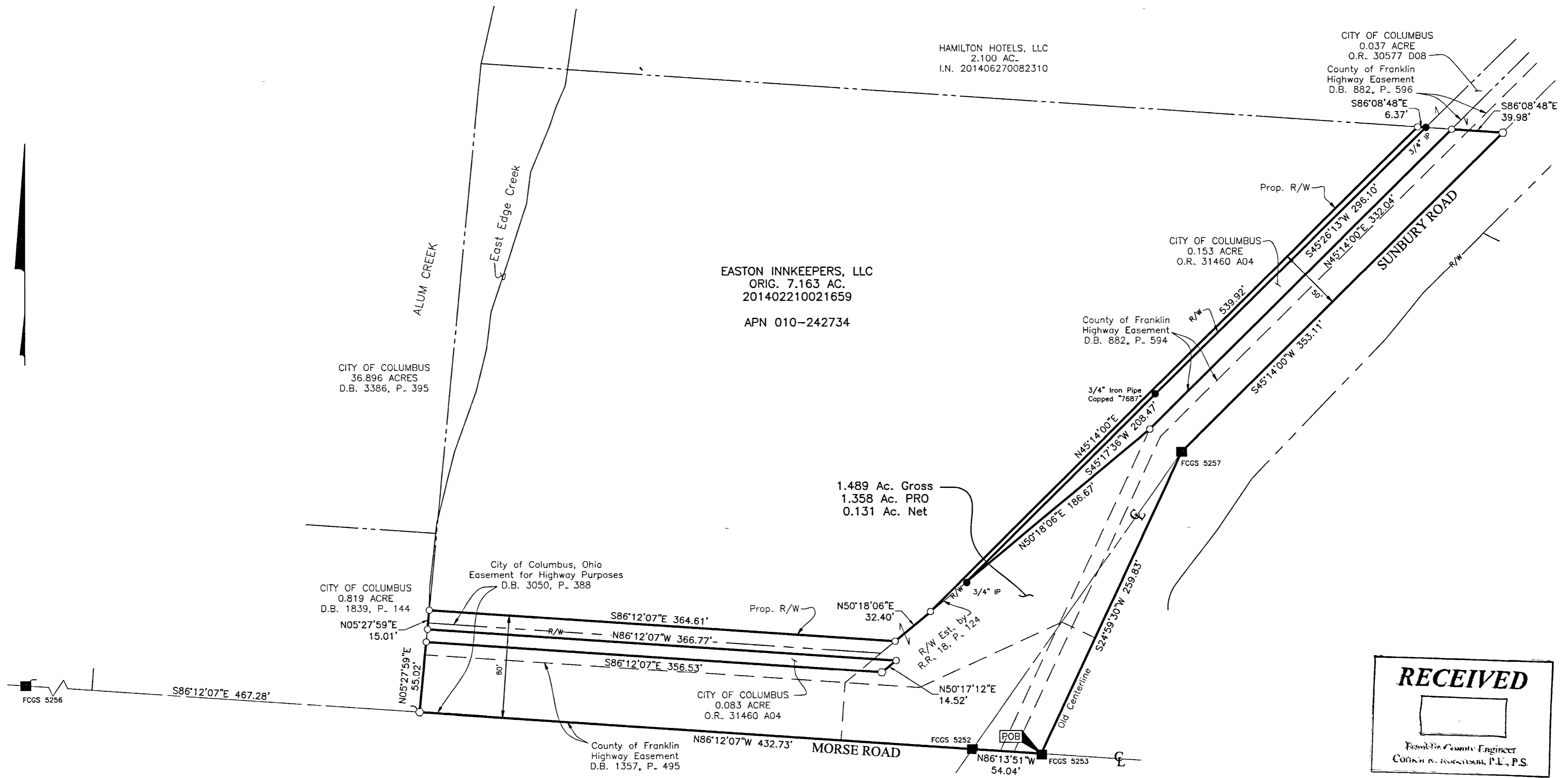


SURVEY OF ACREAGE PARCEL

QUARTER TOWNSHIP 3, TOWNSHIP 2, RANGE 17

UNITED STATES MILITARY DISTRICT

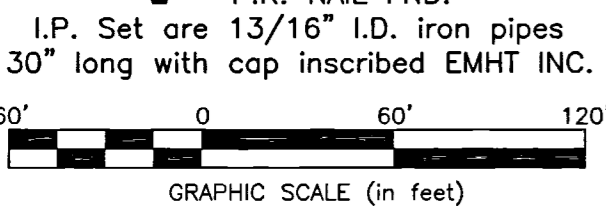
CITY OF COLUMBUS, COUNTY OF FRANKLIN, STATE OF OHIO



RECEIVED

Franklin County Engineer
COURTNEY A. ROBERTSON, P.E., P.S.

- = STONE FND.
- = MON. FND.
- = I.P. FND.
- = I.P. SET
- = MAG. NAIL FND.
- = MAG. NAIL SET
- ▲ = R.R. SPK. FND.
- △ = R.R. SPK. SET
- = P.K. NAIL FND.



BASIS OF BEARINGS:
The bearings hereon are based on the Ohio State Plane Coordinate System, South Zone, NAD83 (NSRS2007). A bearing of North 86° 12' 07" West was held for the centerline of Morse Road between county monuments FCGS 5252 and FCGS 5256.

SURVEY NOTE:
This survey was prepared using documents of record, prior plats of survey, observed evidence located by an actual field survey, in May 2016, and previous surveys by EMHT Inc. from December 2005 and July 2009.

By John C. Dodgion 03/07/2019
Professional Surveyor No. 8069 Date

EMHT			Date: June 16, 2016
Evans, Mechwart, Hambleton & Tilton, Inc. Engineers • Surveyors • Planners • Scientists 5500 New Albany Road, Columbus, OH 43054 Phone: 614.775.4500 Toll Free: 888.775.3648 emht.com			Scale: 1" = 60'
			Job No: 20160561
			Sheet: 1 of 1
REVISIONS			
MARK	DATE	DESCRIPTION	
jcd	3/6/19	update	

C:\Users\jcd\PROJECTS\20160561\EMHT\20160561-VS-BNDY-WR.DWG plotted by DODGION, JOHN on 3/6/2019 3:02:05 PM last saved by DODGION, JOHN on 3/6/2019 3:01:47 PM