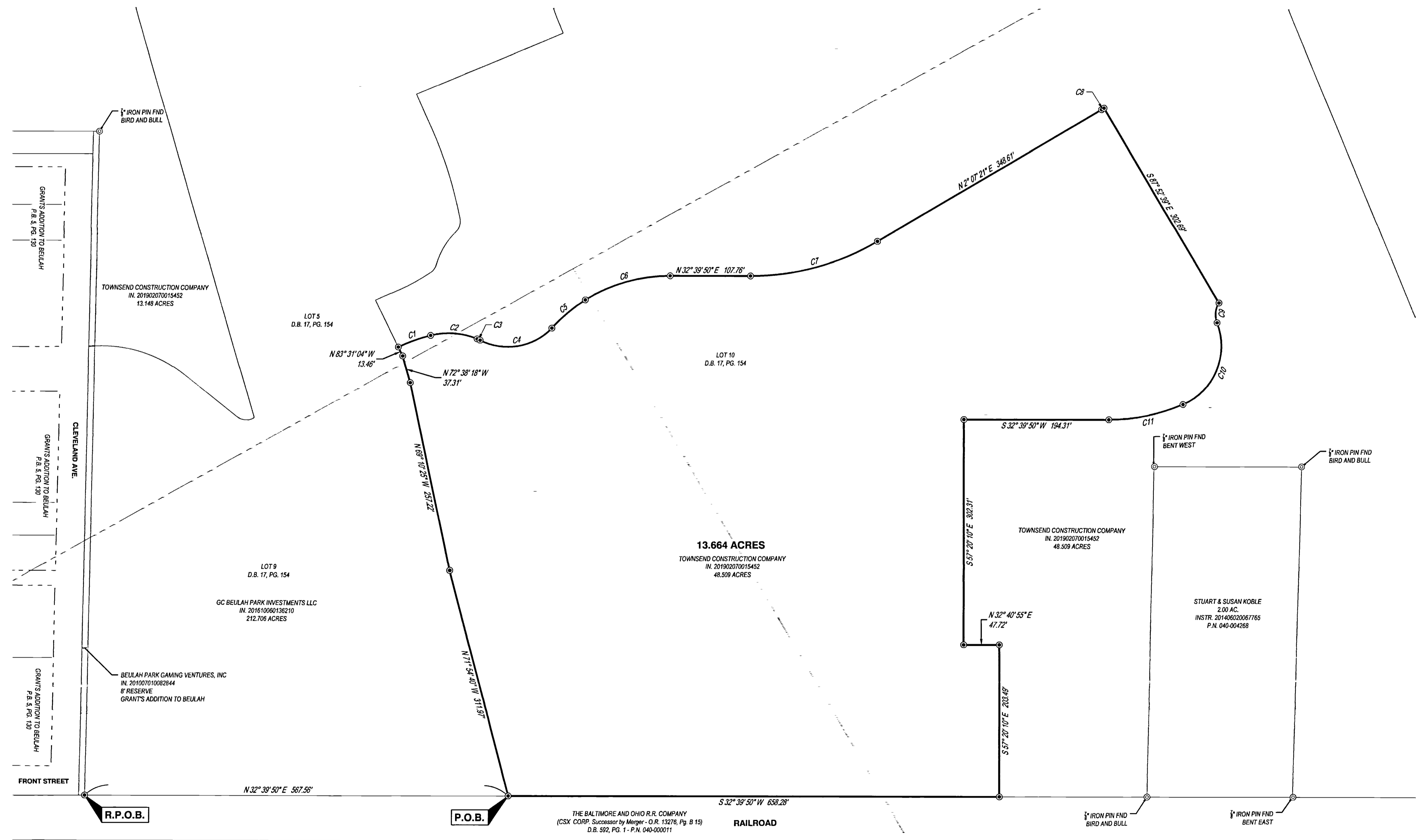
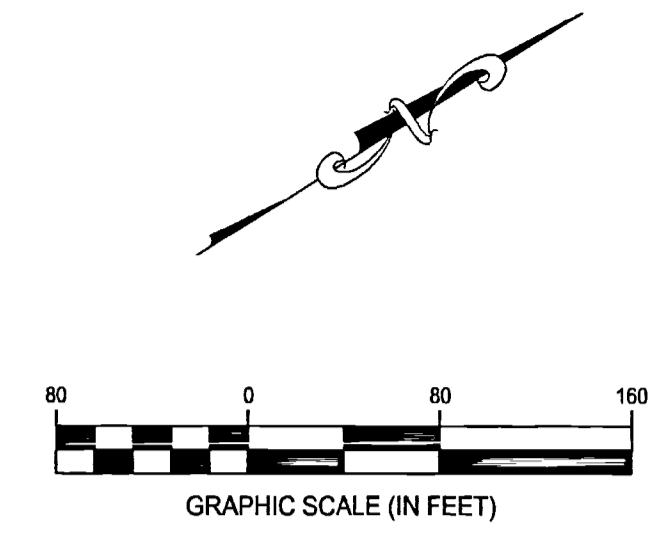


SURVEY OF ACREAGE PARCELS

STATE OF OHIO, COUNTY OF FRANKLIN, CITY OF GROVE CITY,
VIRGINIA MILITARY SURVEY NUMBER 1388



Curve table				
Curve	Radius	Arc Length	Chord	Delta Angle
C1	215.00'	45.98'	N12° 36' 31"E, 45.89'	12° 15' 10"
C2	100.00'	63.51'	N36° 55' 45"E, 62.45'	36° 23' 16"
C3	104.45'	4.33'	N56° 18' 36"E, 4.33'	2° 22' 28"
C4	82.00'	104.54'	N22° 59' 57"E, 97.60'	73° 02' 43"
C5	222.39'	58.75'	N7° 31' 21"W, 58.58'	15° 08' 13"
C6	215.00'	119.63'	N16° 43' 27"E, 118.09'	31° 52' 46"
C7	335.00'	178.57'	N17° 23' 36"E, 176.46'	30° 32' 29"
C8	335.00'	3.87'	N1° 47' 30"E, 3.87'	0° 39' 43"
C9	29.50'	27.58'	S52° 04' 09"E, 26.59'	53° 34' 32"
C10	85.50'	131.61'	S34° 45' 30"E, 119.00'	88° 11' 50"
C11	250.50'	101.97'	S21° 00' 08"W, 101.27'	23° 19' 25"

LEGEND

- IRON PIN FND
- ⊙ SET 5/8"X30" REBER WITH YELLOW I.D. CAP STAMPED "CESO"

BASIS OF BEARING:
THE BASIS OF BEARING IS BASED ON A BEARING OF NORTH 03° 14' 40" EAST FOR THE CENTERLINE OF DEMOREST ROAD BETWEEN FRANKLIN COUNTY MONUMENTS F.C.G.S. 5131, F.C.G.S. 1236 AND F.C.G.S. 1906, AS SHOWN ON THE CENTERLINE SURVEY PLAT, SHEET 1 OF 2 FOR DEMOREST ROAD AND AVAILABLE AT THE FRANKLIN COUNTY ENGINEER'S OFFICE.

Jeffrey A. Miller 5-2-19
JEFFREY A. MILLER, OHIO PS NO 7211
jeff.miller@ssoinc.com

RECEIVED
MAY 03 2019
Franklin County Engineer
Cornell R. Robertson, P.E., P.S.

SURVEY OF ACREAGE PARCELS	
13.664 ACRES	
GROVE CITY	FRANKLIN COUNTY, OHIO
SCALE: 1"=80'	DATE: 5/2/2019
DESIGN: N/A	JOB NO.: 755835
DRAWN: ALB	SHEET NO.:
CHECKED: RK	1 OF 1