



# LONG STREET EXTENSION L/A RIGHT-OF-WAY CONVERSION

## HALF SECTION 9 AND HALF SECTION 10, SECTION 8 FRACTIONAL SECTION 25. SECTION 16 TOWNSHIP 5, RANGE 22, SCOFIELD'S SURVEY OF THE REFUGEE LANDS CITY OF COLUMBUS, FRANKLIN COUNTY, OHIO

GRAPHIC SCALE: 1 inch = 60 feet  
0 30 60 120 180

### Basis of Bearings

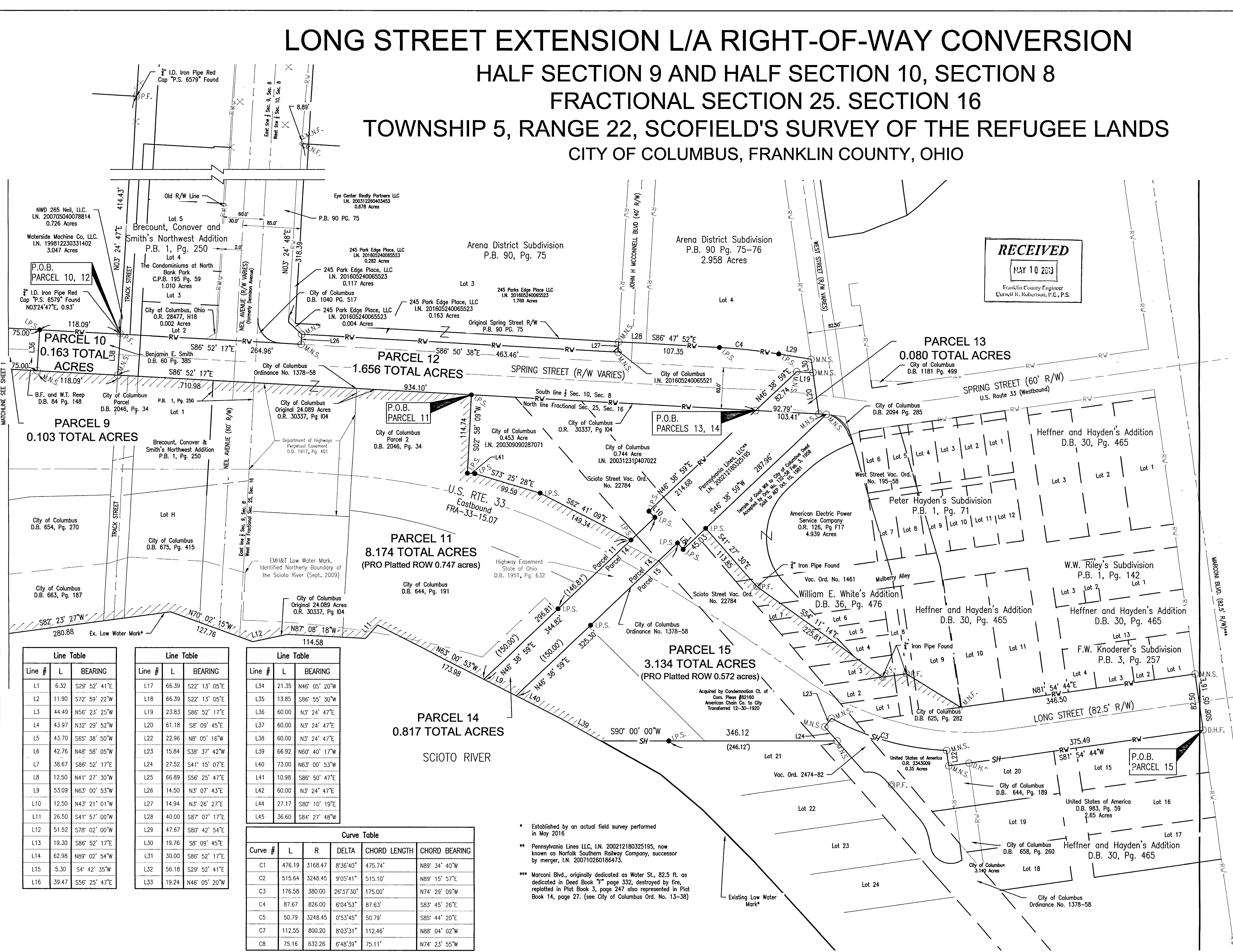
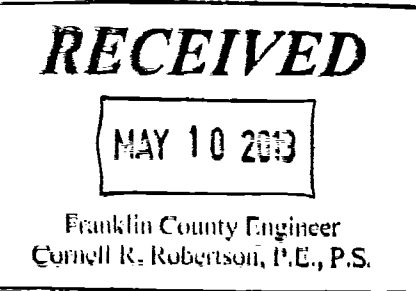
Bearings are based on the south right of way line of Spring Street being South 86°52'17" East per the Ohio State Plane Coordinate System, NAD83, Ohio South Zone, 2011 Adjustment.

### Legend

See sheet 1 for legend

### Certification

I hereby certify this plat was prepared by using measurements obtained by an actual field survey conducted under my direct supervision in January-June 2016.



Line #	L	BEARING
L1	6.32	S29° 52' 41"E
L2	11.90	S72° 59' 22"W
L3	44.49	N56° 23' 25"W
L4	43.97	N32° 29' 52"W
L5	43.70	S65° 38' 50"W
L6	42.76	N48° 58' 05"W
L7	38.67	S86° 52' 17"E
L8	12.50	N41° 27' 30"W
L9	53.09	N63° 00' 53"W
L10	12.50	N43° 21' 01"W
L11	26.50	S41° 57' 00"W
L12	51.52	S78° 02' 00"W
L13	19.30	S86° 52' 17"E
L14	62.98	N89° 02' 54"W
L15	5.30	S4° 42' 35"W
L16	39.47	S56° 25' 47"E

Line #	L	BEARING
L17	66.39	S22° 13' 05"E
L18	66.39	S22° 13' 05"E
L19	23.83	S86° 52' 17"E
L20	61.18	S8° 09' 45"E
L21	22.96	N8° 05' 16"W
L22	15.84	S38° 37' 42"W
L23	27.52	S41° 15' 07"E
L24	66.89	S56° 25' 47"E
L25	14.50	N3° 07' 43"E
L26	14.94	N3° 26' 27"E
L27	40.00	S87° 07' 17"E
L28	47.67	S80° 42' 54"E
L29	19.76	S8° 09' 45"E
L30	30.00	S86° 52' 17"E
L31	56.18	S29° 52' 41"E
L32	19.24	N46° 05' 20"W

Line #	L	BEARING
L33	21.35	N46° 05' 20"W
L34	13.85	S86° 55' 30"W
L35	60.00	N3° 24' 47"E
L36	60.00	N3° 24' 47"E
L37	60.00	N3° 24' 47"E
L38	60.00	N3° 24' 47"E
L39	66.92	N60° 40' 17"W
L40	73.00	N63° 00' 53"W
L41	10.98	S86° 50' 47"E
L42	60.00	N3° 24' 47"E
L43	27.17	S80° 10' 19"E
L44	36.60	S84° 27' 48"W

Curve #	L	R	DELTA	CHORD LENGTH	CHORD BEARING
C1	476.19	3168.47	8°36'40"	475.74'	N89° 34' 40"W
C2	515.64	3248.45	9°05'41"	515.10'	N89° 15' 57"E
C3	176.58	380.00	26°37'30"	175.00'	N74° 29' 09"W
C4	87.67	826.00	6°04'53"	87.63'	S83° 45' 26"E
C5	50.79	3248.45	0°53'45"	50.79'	S85° 44' 20"E
C6	112.55	800.20	8°03'31"	112.46'	N88° 04' 02"W
C7	75.16	632.26	6°48'39"	75.11'	N74° 23' 55"W

\* Established by an actual field survey performed in May 2016  
 \*\* Pennsylvania Lines LLC, I.N. 200212180325195, now known as Norfolk Southern Railway Company, successor by merger, I.N. 200710260186473.  
 \*\*\* Marconi Blvd., originally dedicated as Water St., 82.5 ft. as dedicated in Deed Book "F" page 332, destroyed by fire, replatted in Plat Book 3, page 247 also represented in Plat Book 14, page 27. (See City of Columbus Ord. No. 13-38)

**OHM**  
 ARCHITECTS ENGINEERS PLANNERS  
 580 NORTH 4TH STREET  
 SUITE 610  
 COLUMBUS, OHIO 43215  
 OHM-ADVISORS.COM

DRAWING PATH: P:\010\_6500\337160020\_Lona\_Street\_Extension\Drawings\Survey\Plan\Plat.dwg May 09, 2016 - 2:57pm

COPYRIGHT 2016 OHM. ALL DRAWINGS AND WRITTEN MATERIALS APPEARING HEREIN CONSTITUTE THE ORIGINAL AND UNPUBLISHED WORK OF OHM AND THE SAME MAY NOT BE REPRODUCED, DISTRIBUTED, OR DISCLOSED WITHOUT PRIOR WRITTEN CONSENT OF OHM