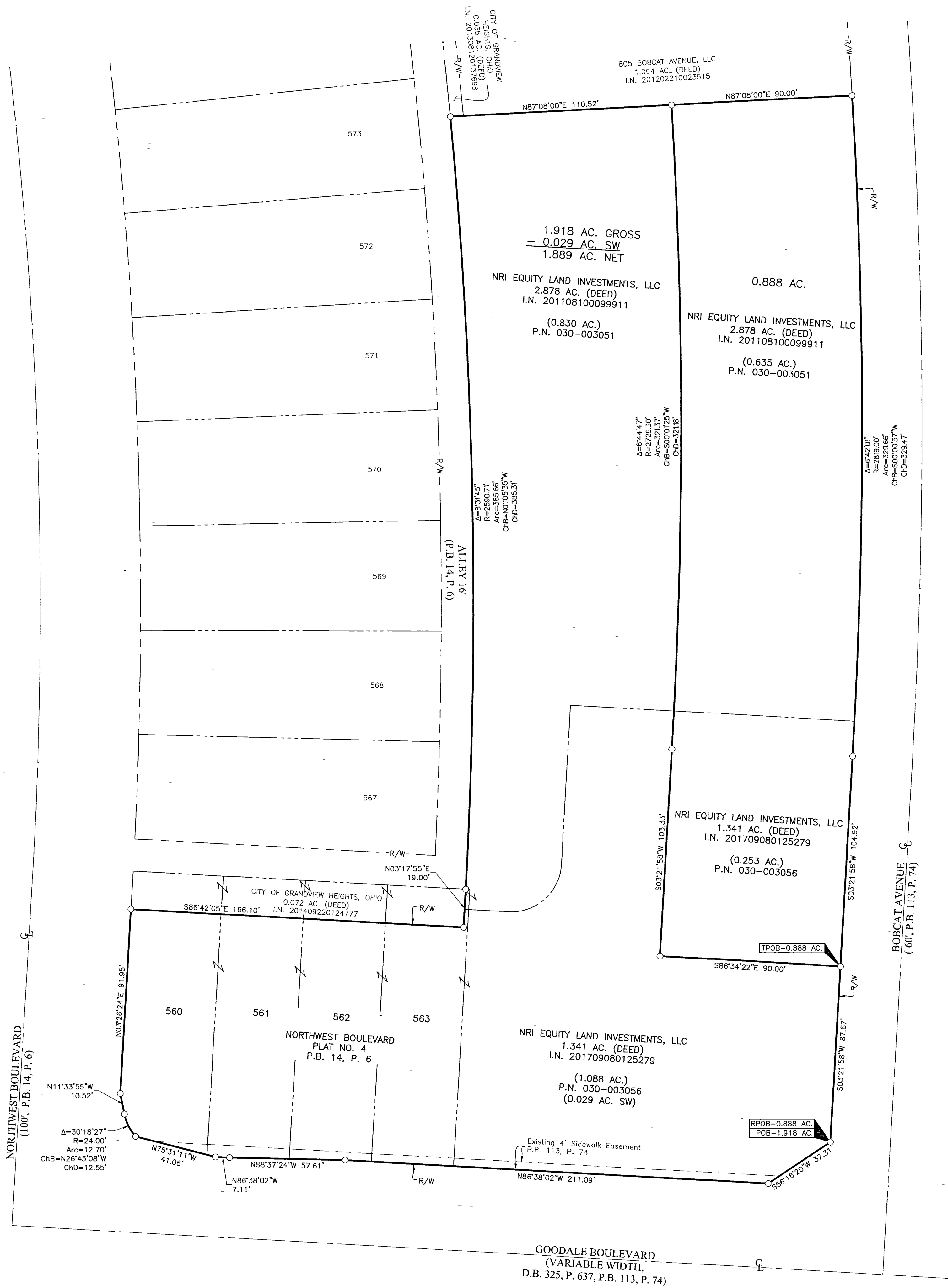
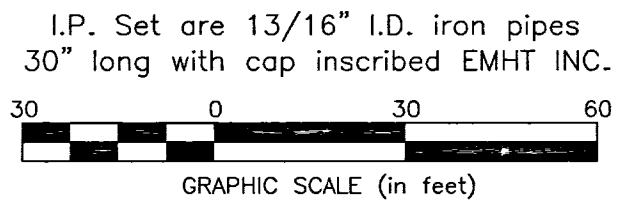


SURVEY OF ACREAGE PARCELS

SECTION 7, TOWNSHIP 5, RANGE 22 REFUGEE LANDS CITY OF GRANDVIEW HEIGHTS, COUNTY OF FRANKLIN, STATE OF OHIO

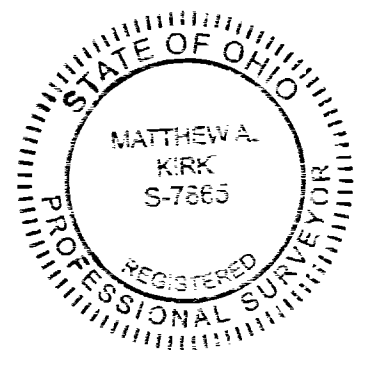


- = STONE FND.
- = MON. FND.
- = I.P. FND.
- = I.P. SET
- = MAG. NAIL FND.
- = MAG. NAIL SET
- ▲ = R.R. SPK. FND.
- △ = R.R. SPK. SET
- = P.K. NAIL FND.



RECEIVED

Franklin County Engineer
Cornell R. Robertson, P.E., P.S.



By Matthew A. Kirk Date 20 Feb 19
Matthew A. Kirk
Professional Surveyor No. 7865

SURVEY NOTE:
This survey was prepared using documents of record, prior plats of survey, and observed evidence located by an actual field survey.

BASIS OF BEARINGS:
The bearing shown hereon area based on the Ohio State Plane Coordinate System, South Zone, as per NAD83(1986 Adjustment). Control for the bearings was from the coordinates of Franklin County Monument 5-83 and 4-83, having a bearing of North 00° 22' 10" west for a portion of the west limited access right-of-way of Olentangy River Road, as established by the Franklin County Engineering Department using Global Position System procedures and equipment.

EMHT Evans, Mechwart, Hambleton & Titon, Inc. Engineers • Surveyors • Planners • Scientists 5500 New Albany Road, Columbus, OH 43054 Phone: 614.775.4500 • Toll Free: 888.775.3448 emht.com		Date: February 20, 2019
Scale: 1" = 30'		Job No: 2018-1300
Sheet: 1 of 1		
REVISIONS		
MARK	DATE	DESCRIPTION