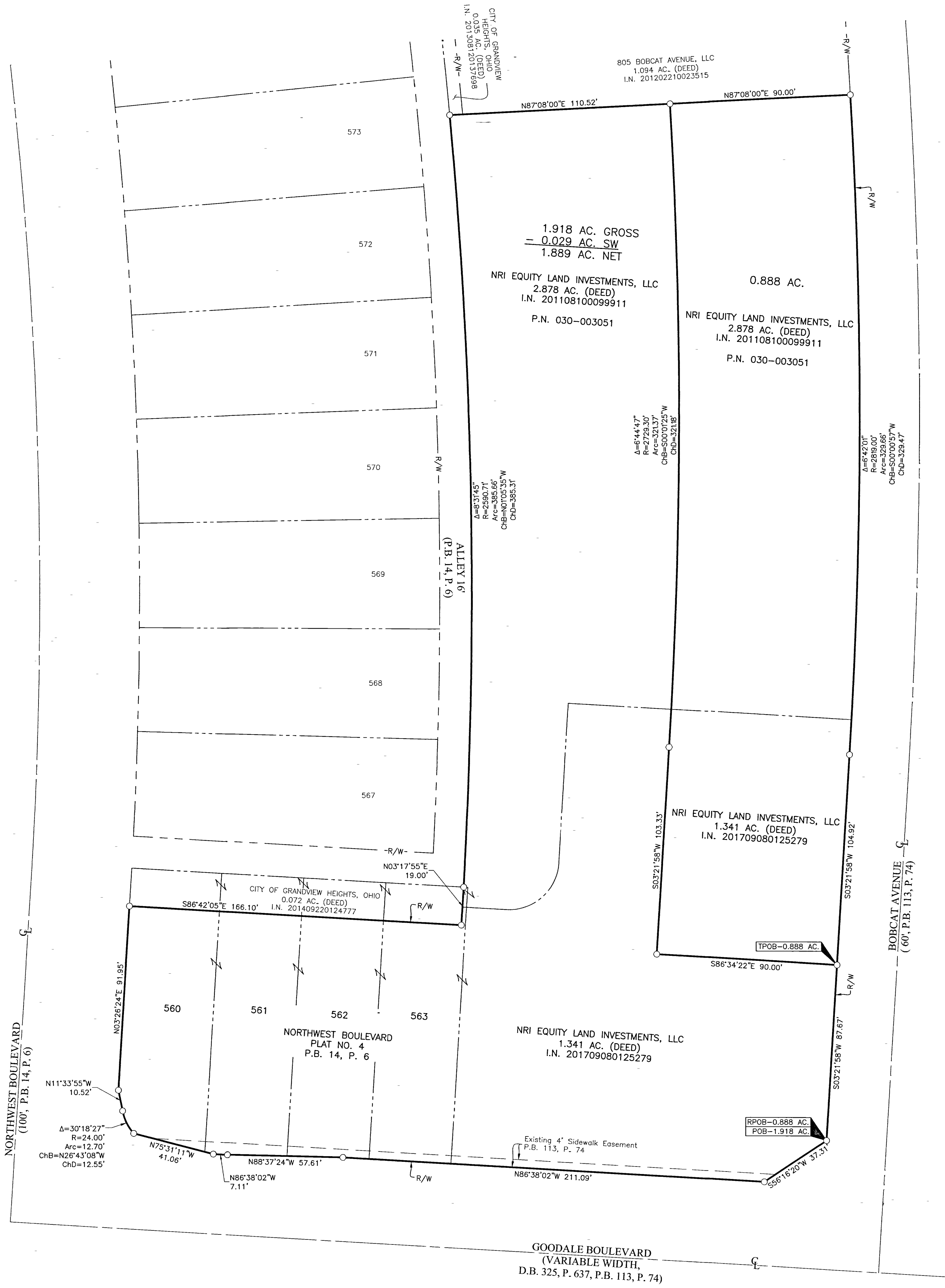


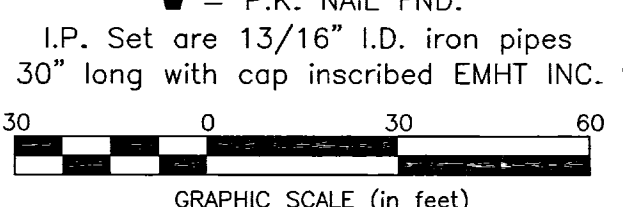
SURVEY OF ACREAGE PARCELS

SECTION 7, TOWNSHIP 5, RANGE 22 REFUGEE LANDS CITY OF GRANDVIEW HEIGHTS, COUNTY OF FRANKLIN, STATE OF OHIO



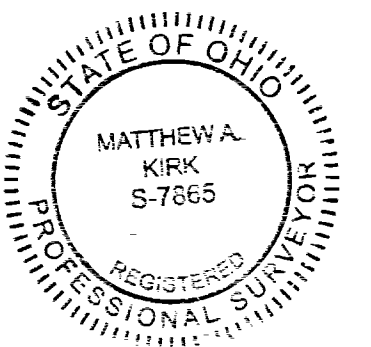
C:\Users\matt\OneDrive\Documents\2018\2018-1300-VS-BNDY-01.dwg printed by: matt, matt@emht.com on 3/18/2019 12:26:58 PM

- = STONE FND.
- = MON. FND.
- = I.P. FND.
- = I.P. SET
- = MAG. NAIL FND.
- = MAG. NAIL SET
- ▲ = R.R. SPK. FND.
- △ = R.R. SPK. SET
- = P.K. NAIL FND.



RECEIVED

Franklin County Engineer
Council R. Rubertson, P.E., P.S.



By Matthew A. Kirk Date March 19
 Matthew A. Kirk
 Professional Surveyor No. 7865

SURVEY NOTE:
 This survey was prepared using documents of record, prior plats of survey, and observed evidence located by an actual field survey.

BASIS OF BEARINGS:
 The bearing shown hereon area based on the Ohio State Plane Coordinate System, South Zone, as per NAD83(1986 Adjustment). Control for the bearings was from the coordinates of Franklin County Monument 5-83 and 4-83, having a bearing of North 00° 22' 10" west for a portion of the west limited access right-of-way of Oletangy River Road, as established by the Franklin County Engineering Department using Global Position System procedures and equipment.

EMHT		Date: March 18, 2019	
Evans, Mechwart, Hambleton & Tilton, Inc. Engineers • Surveyors • Planners • Scientists 5500 New Albany Road, Columbus, OH 43054 Phone: 614.775.4500 Toll Free: 888.775.3648		Scale: 1" = 30'	
emht.com		Job No: 2018-1300	
		Sheet: 1 of 1	
REVISIONS			
MARK	DATE	DESCRIPTION	