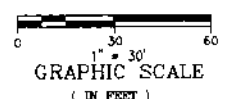


RIGHT OF WAY DEDICATION PLAT

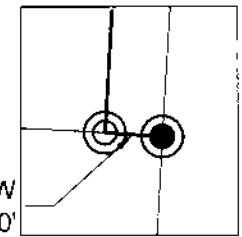
SITUATED IN STATE OF OHIO, COUNTY OF FRANKLIN, CITY OF COLUMBUS TWP. 4, TWP. 1N, R18W, UNITED STATES MILITARY LANDS BEING A RESURVEY OF A 10.818 ACRE TRACT, PARCEL A, IN THE NAME OF CENTRAL OHIO TRANSIT AUTHORITY AS DESCRIBED IN O.R. 02509, PG. A06



NORTH



GRAPHIC SCALE
(IN FEET)



N86°33'19"W
3.00'

DETAIL A

LEGEND

- ◆PK MAG NAIL SET
- 3/4" ID, 30" IRON PIPE SET, YELLOW CAP STAMPED "OHM"
- ⊙ DRILL HOLE SET
- ⊙ DRILL HOLE FOUND

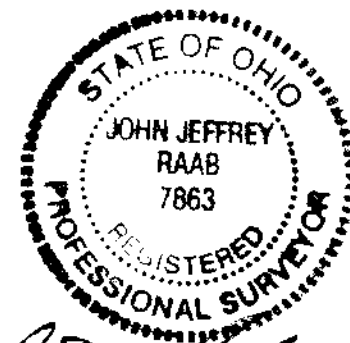
RECEIVED

JUN 18 2019

Franklin County Engineer
Cornell R. Robertson, P.E., P.S.

BEARINGS ARE BASED ON THE OHIO STATE PLANE COORDINATE SYSTEM, SOUTH ZONE AND NORTH AMERICAN DATUM OF 1983, (NSRS 2011), HOLDING THE WESTERLY RIGHT OF WAY LINE OF FIELDS AVE. 50' AS NORTH 03° 27' 27" EAST.

THIS PLAT WAS PREPARED FROM AN ACTUAL FIELD SURVEY PERFORMED BY OHM-ADVISORS ALONG WITH PUBLIC RECORDS ON FILE IN THE FRANKLIN COUNTY RECORDER'S OFFICE AND FRANKLIN COUNTY ENGINEER'S OFFICE UNDER MY DIRECT SUPERVISION IN NOVEMBER, 2017.



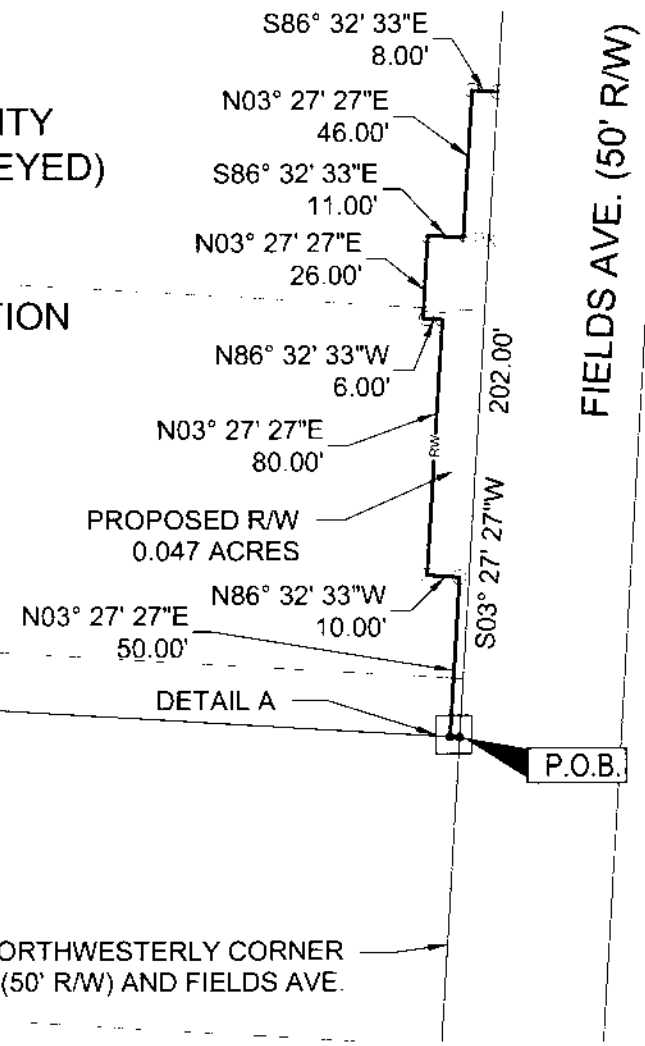
JOHN J. RAAB, PS 7863
DATE 06/17/2019



LOT 9
CENTRAL OHIO TRANSIT AUTHORITY
10.818 ACRES (RECORDED) & (SURVEYED)
O.R. 02509, PG. A06

LOT 8
S. DOYLE'S CATTLE YARDS ADDITION
PLAT BOOK 2, PG. 45

LOT 7
RUMPKE AND RUMPKE, LLC
12.89 ACRES
O.R. 27055 PG C15



823.63 FT TO THE NORTHWESTERLY CORNER OF YOEMAN ST. (50' R/W) AND FIELDS AVE.