

RECEIVED

F-2-A

JUN 28 2019

Franklin County Engineer
Cornell R. Robertson, P.E., P.S.

All iron pins set are 5/8" rebar,
30" long with a plastic cap
inscribed "Advanced 7661".

Legend

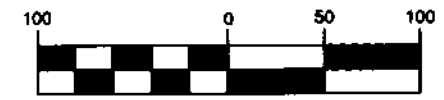
- 5/8" Iron Rod Found
- 3/4" Iron Pipe Found
- Iron Pin Set
- ⊗ PK Nail Set

**Parcel Exhibit
0.093 Ac.**

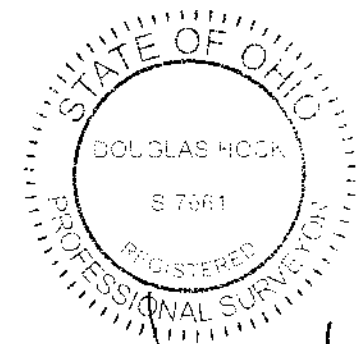
City of Columbus, Franklin County, Ohio
Section 1, Township 1, Range 19
United States Military Lands

City of Columbus
Parcel 21WL - 3.811 Ac.
D.B. 3405, Page 653

GRAPHIC SCALE



(IN FEET)
1 inch = 100 ft.

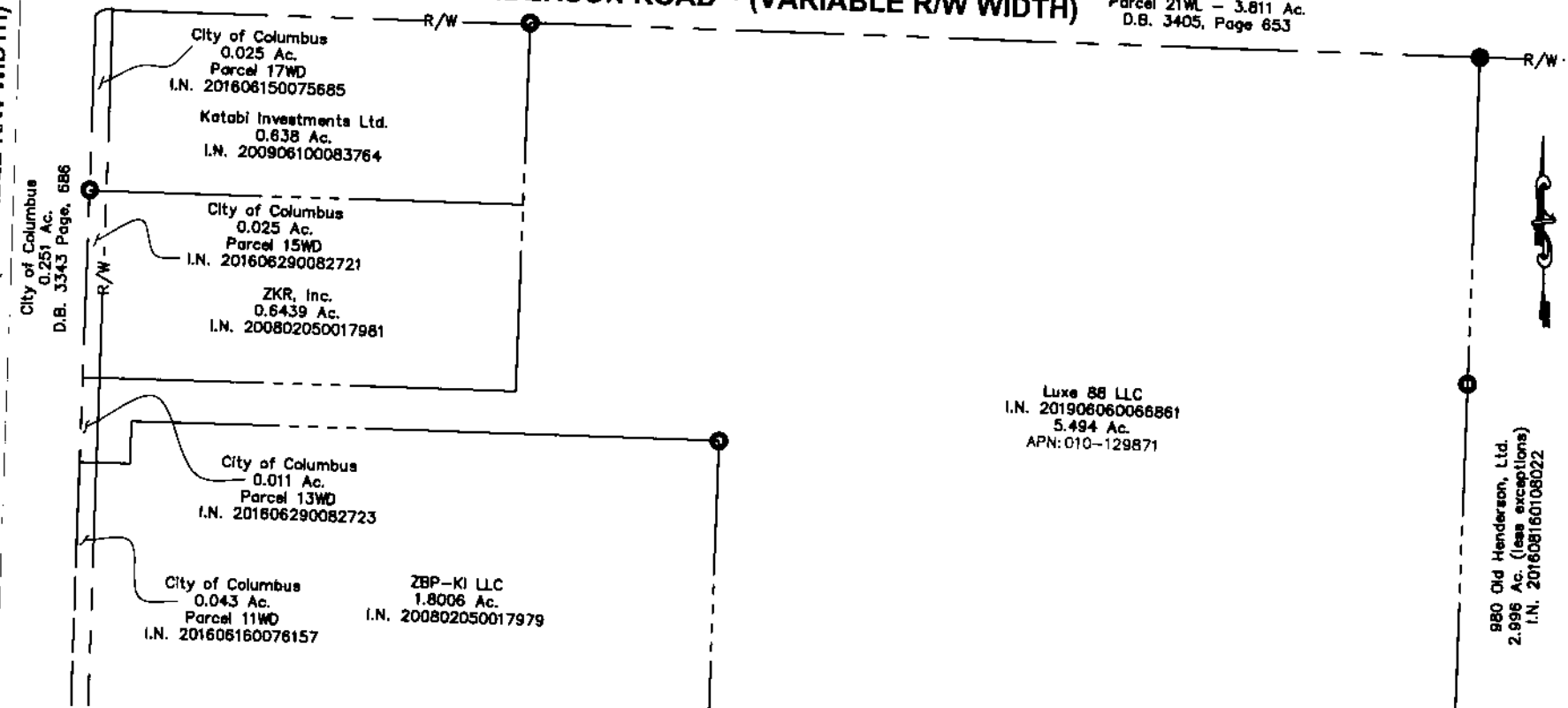


Douglas R. Hock 6/27/19
Douglas R. Hock, P.S. 7661 Date:

KENNY ROAD ~ (VARIABLE R/W WIDTH)

HENDERSON ROAD ~ (VARIABLE R/W WIDTH)

OLD HENDERSON ROAD ~ (VARIABLE R/W WIDTH)



LINE TABLE		
LINE	BEARING	DISTANCE
L1	S88°07'34"E	114.98'
L2	N73°32'01"E	40.00'
L3	S02°22'25"W	37.59'
L4	N88°07'35"W	152.84'
L5	N02°22'25"E	25.00'

This exhibit is based on existing Franklin County Auditor's and Recorder's records and an actual field survey performed by Advanced Civil Design in September 2018.

Bearings are based on the bearing of S 87° 39' 35" E for a portion of the southerly right-of-way line of Henderson Road and as established by using a G.P.S. Survey (Ohio State Plane Coordinate System, South Zone, NAD83, NSRS 2007).

DRAWN BY: DRB JOB NO.: 18-0142-65
 DATE: 06/27/2019 CHECKED BY: BCK

ADVANCED
CIVIL DESIGN
ENGINEERS SURVEYORS

422 Beecher Road
Gahanna, Ohio 43230
ph 614.428.7750
fax 614.428.7755

Z:\18-0142-65\DRAWINGS\PRODUCTION DRAWINGS\SURV\18-0142-65-0093 ac r. w drap revl.dwg Layout 1 Jun 27, 2019 4:16:33pm dblickham