

Boundary Exhibit ~ 10.077 Ac.

City of Columbus, Franklin County, Ohio
 Quarter Township 3, Township 1, Range 17,
 United States Military District

RECEIVED

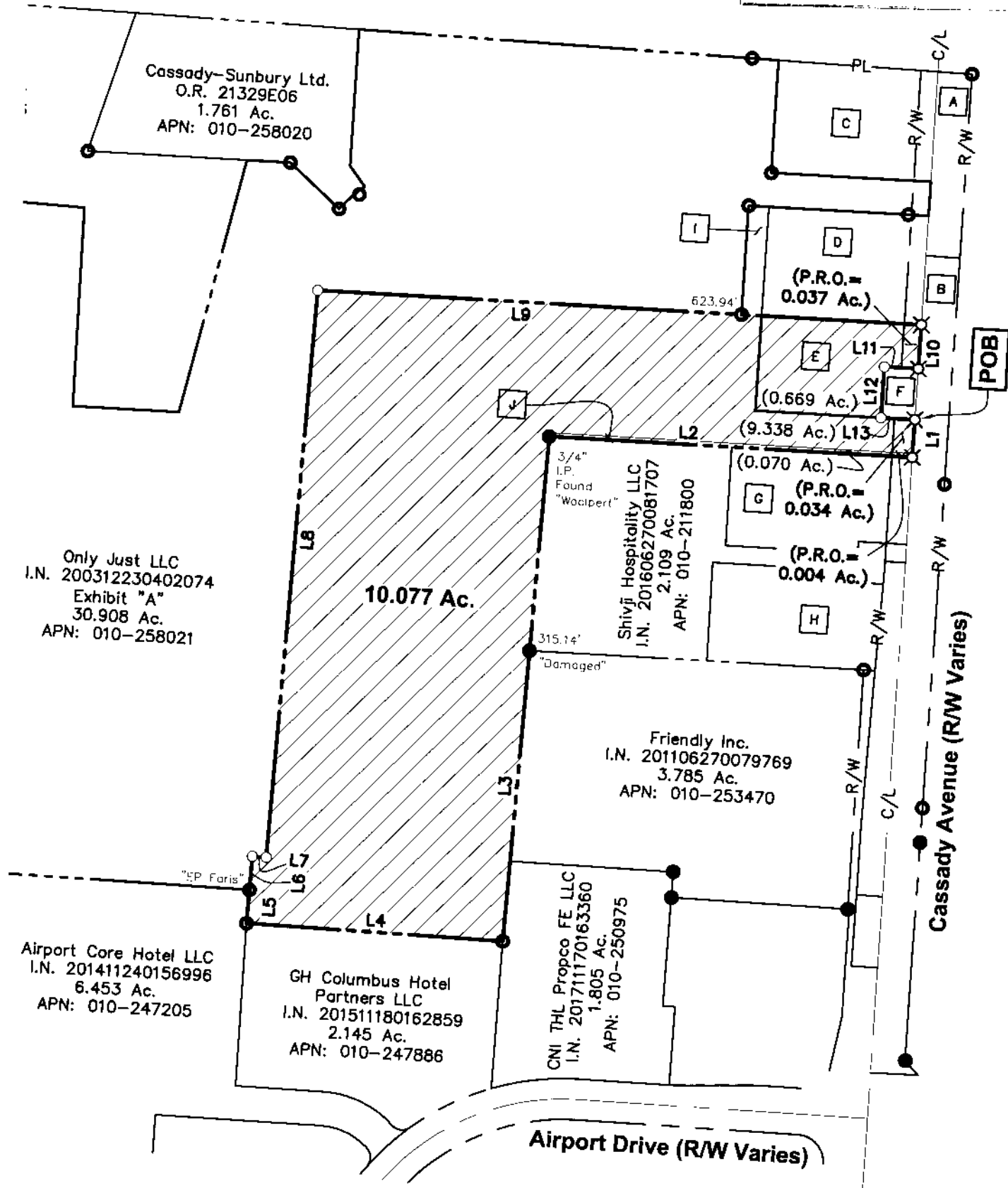
MAY 20 2019

FRANKLIN COUNTY ENGINEERS SURVEYORS

Legend

- Iron Rod Found
- Iron Pipe Found
- ✕ PK Nail Found
- ▲ RR Spike Found
- Iron Pin Set
- ✕ PK Nail Set
- △ RR Spike Set

- A** City of Columbus, Ohio
I.N. 200407150164249
0.310 Ac.
- B** City of Columbus, Ohio
I.N. 200407140163519
1.385 Ac.
- C** Only Just LLC
I.N. 200312230402074
0.890 Ac.
APN: 010-258018
- D** One More LLC
I.N. 200312230402066
0.863 Ac.
APN: 010-258017
- E** Only Just LLC
I.N. 200312230402074
0.669 Ac.
APN: 010-258019
- F** City of Columbus, Ohio
I.N. 200903100033148
0.086 Ac.
- G** Cassidy Retail Investors LLC
I.N. 201811080152814
0.854 Ac.
APN: 010-296192
- H** Shivji Hospitality LLC
I.N. 201606270081707
0.814 Ac.
APN: 010-296191
- I** Investment Land Holdings Inc.
I.N. 199903100060293
0.110 Ac.
- J** Only Just LLC
200312230402074
0.070 Ac.
APN: 010-220385

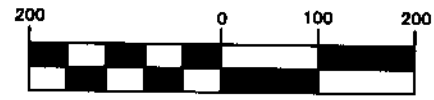


| LINE TABLE | | |
|------------|-------------|----------|
| LINE | BEARING | DISTANCE |
| L1 | S03°09'45"W | 55.70' |
| L2 | N87°20'19"W | 534.45' |
| L3 | S04°33'39"W | 744.53' |
| L4 | N86°35'17"W | 378.46' |
| L5 | N04°21'46"E | 49.50' |
| L6 | N04°12'51"E | 50.00' |
| L7 | S85°29'20"E | 20.37' |

| LINE TABLE | | |
|------------|-------------|----------|
| LINE | BEARING | DISTANCE |
| L8 | N04°31'13"E | 836.62' |
| L9 | S87°20'19"E | 888.94' |
| L10 | S03°09'45"W | 64.89' |
| L11 | N87°20'19"W | 50.00' |
| L12 | S03°09'45"W | 75.23' |
| L13 | S87°20'19"E | 50.00' |

| Acreage Breakdown | | |
|-------------------|----------------|-------------------|
| Auditor's # | Ac. per parcel | P.R.O. per parcel |
| APN: 010-258021 | 9.337 Ac. | 0.034 Ac. |
| APN: 010-258019 | 0.670 Ac. | 0.037 Ac. |
| APN: 010-220385 | 0.070 Ac. | 0.004 Ac. |
| Proposed Parcel | 10.077 Ac. | 0.075 Ac. |

GRAPHIC SCALE

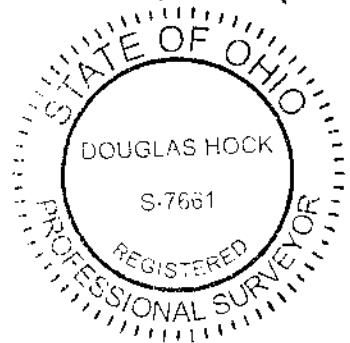


(IN FEET)
 1 inch = 200 ft.

This Survey is based on existing records from Franklin County, and from actual field survey in May of 2019.

All iron pins set are 5/8" diameter, 30" long rebar with plastic cap inscribed "Advanced 7661".

Bearings are based on the Ohio State Plane Coordinate System, South Zone, NAD83 (NSRS2007). Said bearings were derived from GPS observation.



ADVANCED CIVIL DESIGN, INC.

Douglas R. Hock
 Douglas R. Hock, P.S. 7661

5/20/19
 Date:

DRAWN BY: DRB JOB NO.: 17-0155-128
 DATE: 05/15/2019 CHECKED BY: BCK



422 Beecher Road
 Gahanna, Ohio 43230
 ph 614.428.7750
 fax 614.428.7755

Z:\17-0155-128\DWG\PRODUCTION DRAWINGS\SURVEY\17-0155-128 10.077 ac boundary.dwg Layout1 May 20, 2019 - 8:39:17am dbickham