



Evans, Mechwart, Hambleton & Tilton, Inc.
Engineers • Surveyors • Planners • Scientists
5500 New Albany Road, Columbus, OH 43054
Phone: 614.775.4500 Toll Free: 888.775.3648
emht.com

RIGHT OF WAY ACQUISITION

QUARTER TOWNSHIP 3, TOWNSHIP 2, RANGE 17

UNITED STATES MILITARY LANDS

CITY OF COLUMBUS, COUNTY OF FRANKLIN, STATE OF OHIO

Date: April 2, 2019

Scale: 1" = 60'

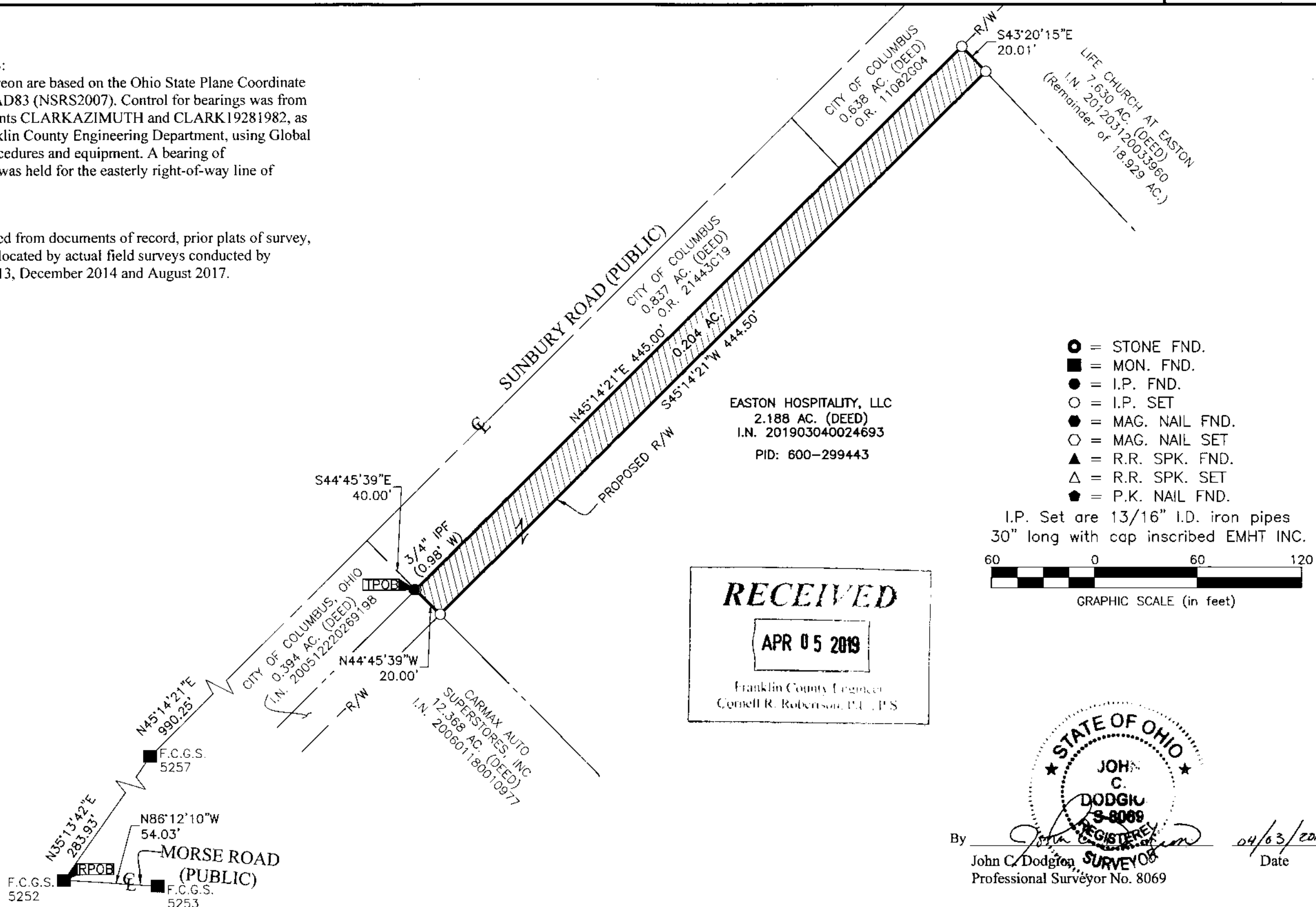
Job No: 2018-1438

BASIS OF BEARINGS:

The bearings shown hereon are based on the Ohio State Plane Coordinate System South Zone, NAD83 (NSRS2007). Control for bearings was from coordinates of monuments CLARKAZIMUTH and CLARK19281982, as established by the Franklin County Engineering Department, using Global Positioning System procedures and equipment. A bearing of North 45° 14' 21" East was held for the easterly right-of-way line of Sunbury Road.

SURVEY NOTE:

This survey was prepared from documents of record, prior plats of survey, and observed evidence located by actual field surveys conducted by EMH&T in January 2013, December 2014 and August 2017.



J:\2018\1438\DWG\04SHEETS\BOUNDARY\20181438-VS-BNDY-01.DWG plotted by DODGION, JOHN on 4/3/2019 10:42:23 AM last saved by DODGION, JOHN on 4/3/2019 10:40:22 AM Xrefs: