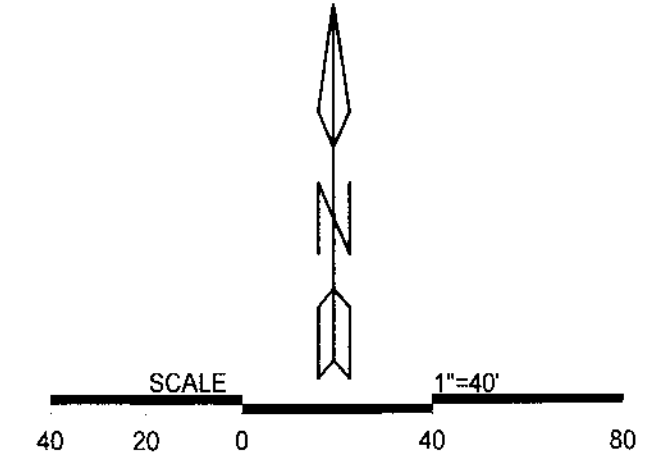
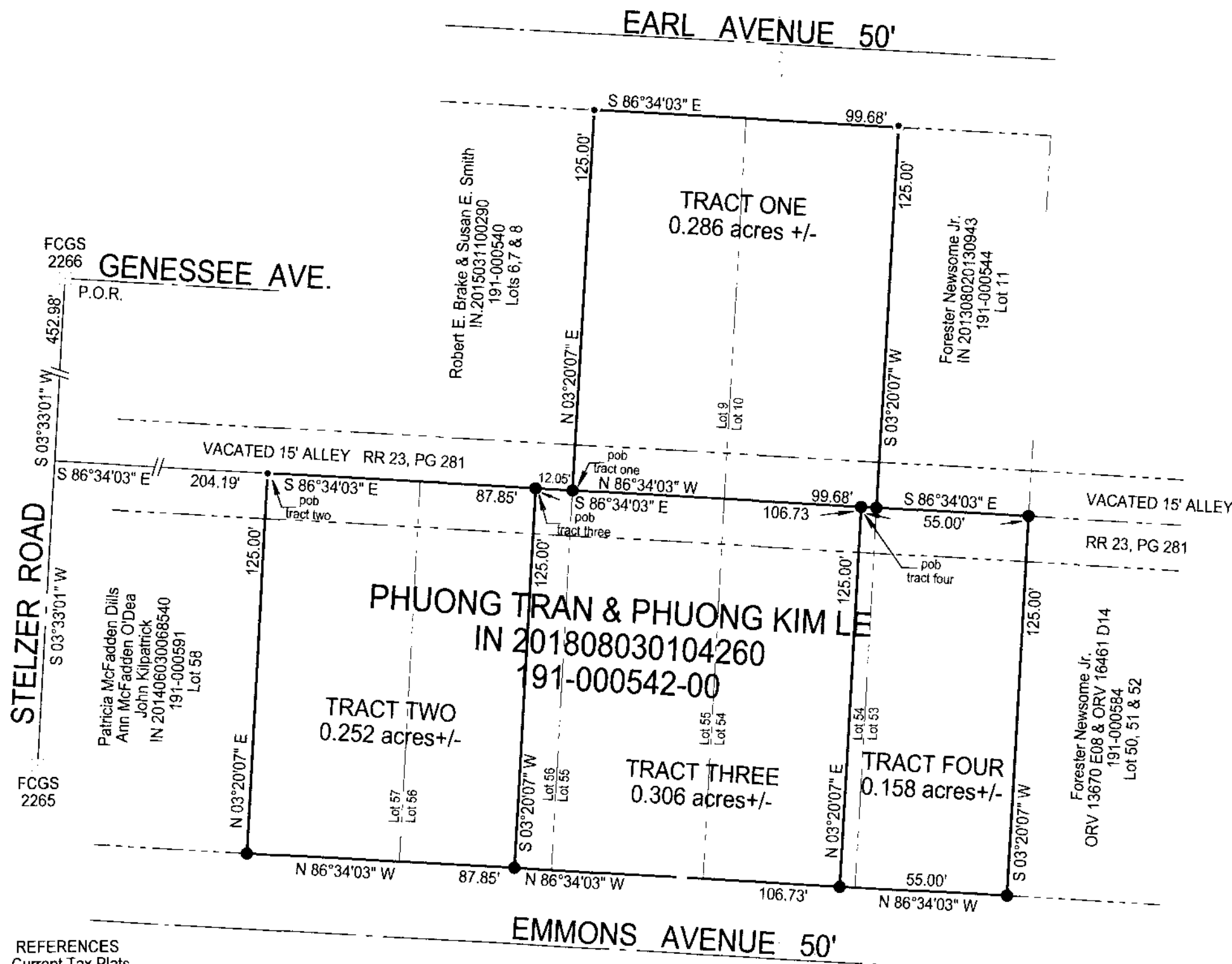


surveyed & platted by  
**POMEROY ASSOCIATES, Ltd.**  
 2550 Corporate Drive, Suite 10  
 Columbus, Ohio 43231  
 614-885-2498

SITUATED IN THE STATE OF OHIO, COUNTY OF FRANKLIN, TOWNSHIP OF MIFFLIN,  
 QUARTER TOWNSHIP 4, TOWNSHIP-1N, RANGE-17W, UNITED STATES MILITARY LANDS,

BEING A DIVISION OF LOTS 9, 10, 53, 54, 55, 56 AND 57 OF  
 BLOCK "F" OF LEONARD PARK AS RECORDED IN PB. 18, PG.18.

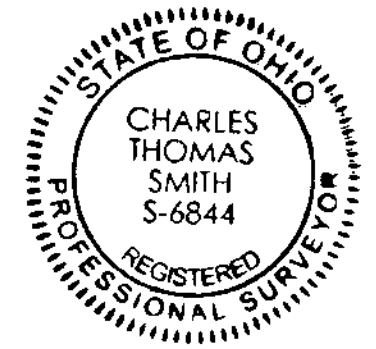
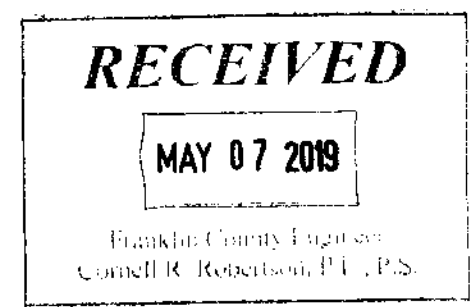
5-4-B



**LEGEND**

- 5/8" X 30" iron pin w/ 1 1/4" plastic ID cap inscribed "Pomeroy & Assoc." set.
- 5/8" iron pin w/ plastic ID cap inscribed "S-8018" existing.
- concrete monument, Franklin County, FCGS

**NOTES:**  
 1. BEARINGS WERE DERIVED FROM THE CENTERLINE OF STELZER ROAD AS RUNNING S03° 33' 01" W.  
 2. ALL DOCUMENT REFERENCES ARE TO THE RECORDS OF FRANKLIN COUNTY UNLESS OTHERWISE STATED.



**REFERENCES**  
 Current Tax Plats  
 Previous surveys  
 Deeds: as noted  
 Aerial Photographs  
 U.S.G.S. Topo Maps  
 Plat Book 18, Pg. 18

**FLOOD ZONE "X"**  
 FRANKLIN COUNTY 390167  
 39049C0193K  
 6/17/08

Plat prepared from an actual survey made under my direct supervision on the 18th day of December, 2018 by,

*C. Thomas Smith* 5-3-19  
 C. Thomas Smith Ohio Professional Surveyor No. 6844