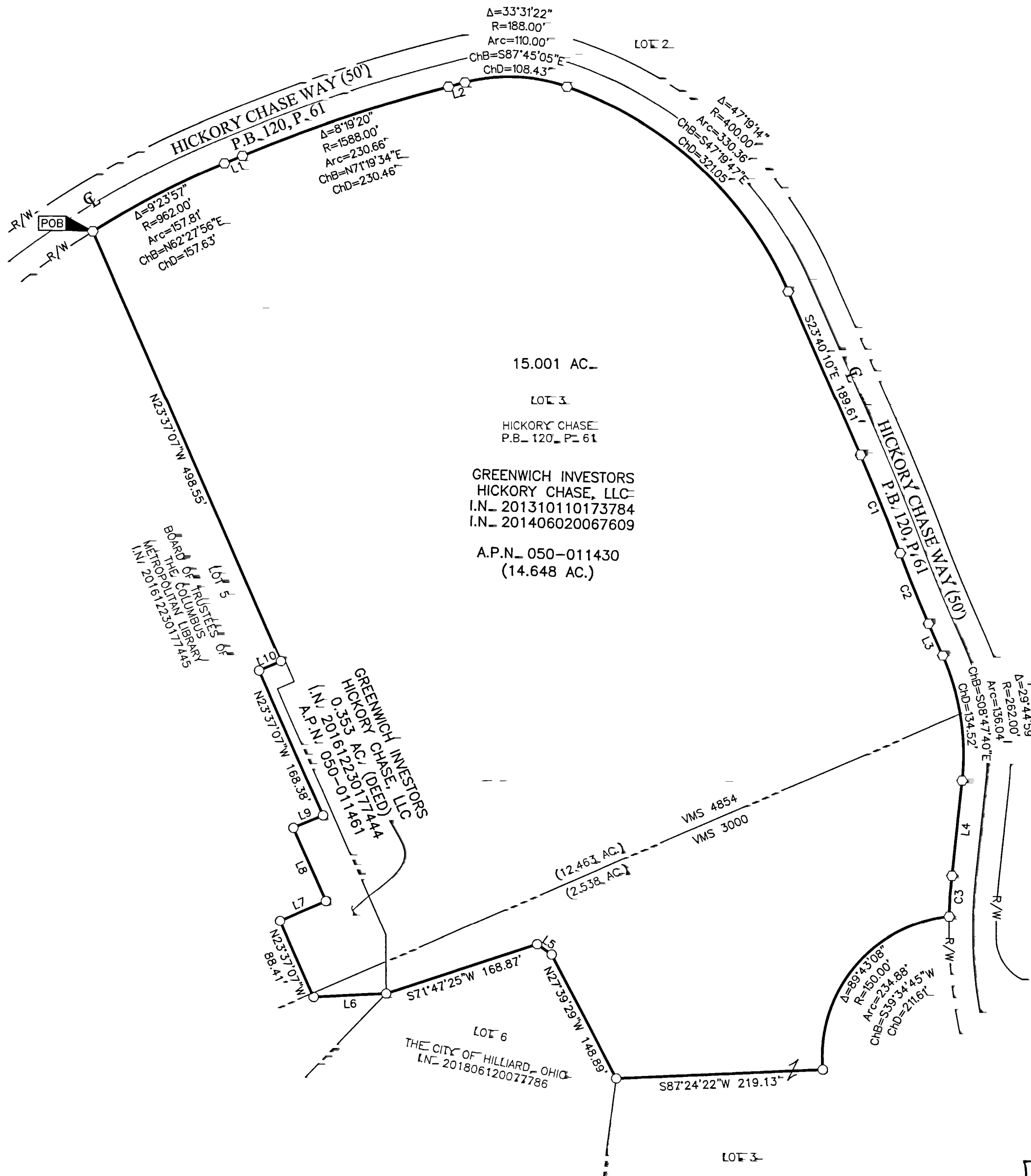


SURVEY OF ACREAGE PARCEL

VIRGINIA MILITARY SURVEY NOS. 3000 & 4854
CITY OF HILLIARD, COUNTY OF FRANKLIN, STATE OF OHIO



15.001 AC.
LOT 3
HICKORY CHASE
P.B. 120, P. 61
GREENWICH INVESTORS
HICKORY CHASE, LLC
I.N. 201310110173784
I.N. 201406020067609
A.P.N. 050-011430
(14.648 AC.)

RECEIVED
JUN 13 2019
Franklin County Engineer
Cornell R. Robertson, P.E., P.S.

BASIS OF BEARINGS=
The Bearings shown hereon are based on the Ohio State Plane Coordinate System, South Zone, as per NAD83 (1986 Adjustment). Control for bearings was from coordinates of monuments FCGS 0005 RESET and FCGS 0006, having a bearing of North 23° 37' 07" West, established by the Franklin County Engineering Department, using Global Positioning System procedures and equipment.

CURVE	DELTA	RADIUS	ARC	CH. BEARING	CH. DIST.
C1	3°15'41"	1975.00'	112.42'	S22°02'19"E	112.40'
C2	3°15'41"	1420.99'	80.88'	S22°02'19"E	80.87'
C3	4°38'32"	538.00'	43.59'	S03°45'34"W	43.58'

SURVEY NOTE=
This survey was prepared using documents of record, prior plats of survey, and observed evidence located by an actual field survey completed in April 2014 and June 2019.

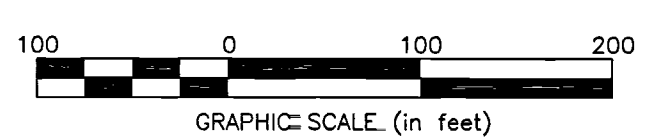
LINE	BEARING	DISTANCE
L1	N67°09'54"E	20.75'
L2	N75°29'15"E	17.97'
L3	S23°40'10"E	37.38'
L4	S06°04'50"W	102.29'
L5	N54°48'37"W	18.95'
L6	S87°08'15"W	76.84'
L7	N66°22'53"E	52.70'
L8	N23°30'59"W	85.24'
L9	N67°03'37"E	33.75'
L10	N66°23'03"E	25.33'



By *Heather L. King* 6/13/19
Heather L. King
Professional Surveyor No. 8307

- = STONE FND.
- = MON. FND.
- = I.P. FND.
- = I.P. SET
- = MAG. NAIL FND.
- = MAG. NAIL SET
- ▲ = R.R. SPK. FND.
- △ = R.R. SPK. SET
- = P.K. NAIL FND.

I.P. Set are 13/16" I.D. iron pipes 30" long with cap inscribed EMHT INC.



<p>Evans, Mechwart, Hambleton & Tilton, Inc. Engineers • Surveyors • Planners • Scientists 5500 New Albany Road, Columbus, OH 43054 Phone: 614.775.4500 Toll Free: 888.775.3648 emht.com</p>	Date= June 11, 2019	
	Scale= 1" = 100'	
	Job No= 2019-0600	
	Sheet= 1 of 1	
REVISIONS		
MARK	DATE	DESCRIPTION