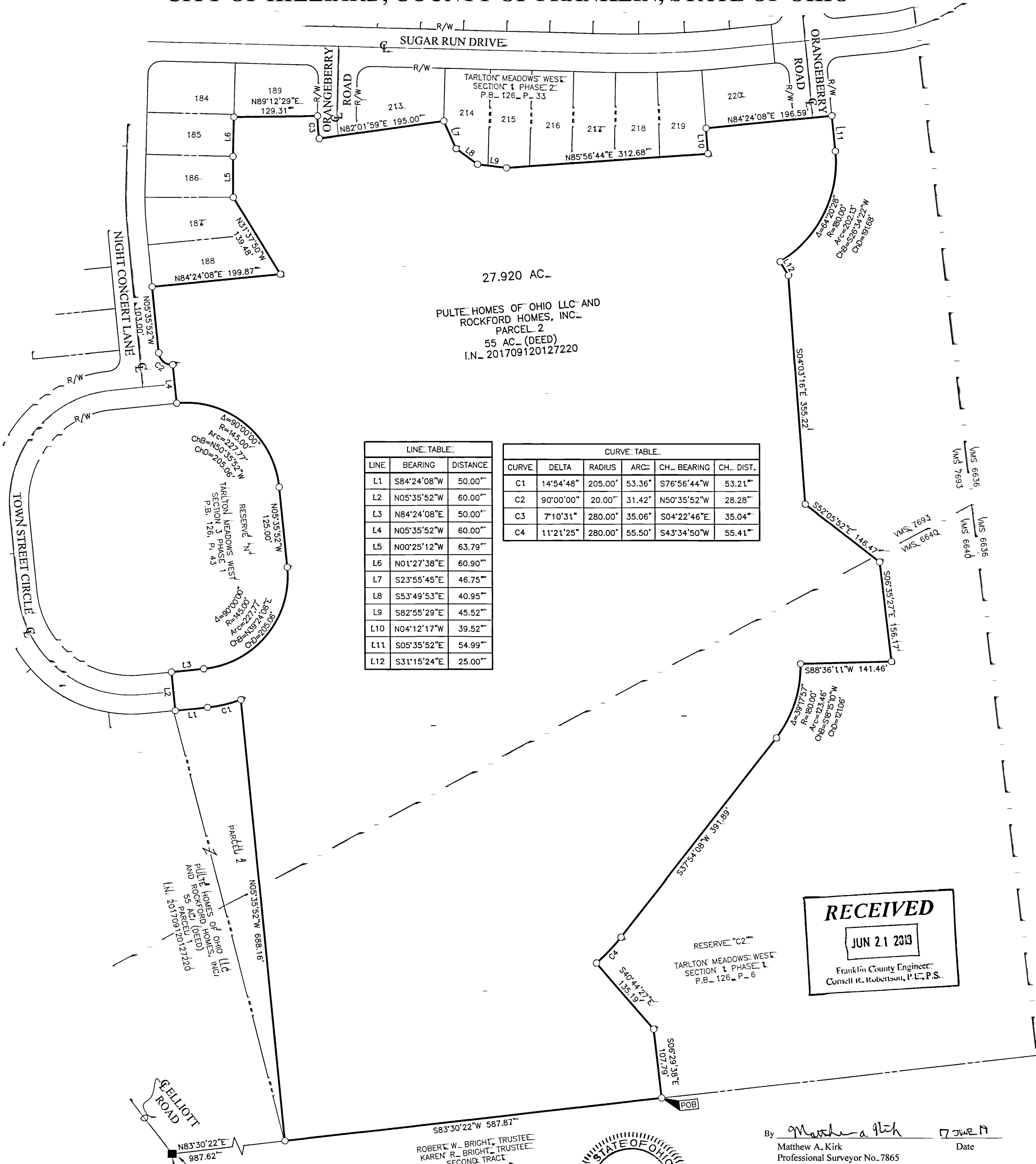


SURVEY OF ACREAGE PARCEL

VIRGINIA MILITARY SURVEY NUMBERS 7693 AND 6640

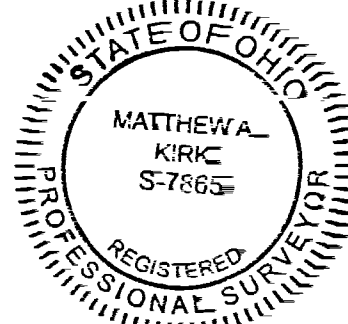
CITY OF HILLIARD, COUNTY OF FRANKLIN, STATE OF OHIO



LINE	BEARING	DISTANCE
L1	S84°24'08"W	50.00
L2	N05°35'52"W	60.00
L3	N84°24'08"E	50.00
L4	N05°35'52"W	60.00
L5	N00°25'12"W	63.79
L6	N01°27'38"E	60.90
L7	S23°55'45"E	46.75
L8	S53°49'53"E	40.95
L9	S82°55'29"E	45.52
L10	N04°12'17"W	39.52
L11	S05°35'52"E	54.99
L12	S31°15'24"E	25.00

CURVE	DELTA	RADIUS	ARC	CH. BEARING	CH. DIST.
C1	14°54'48"	205.00'	53.36'	S76°56'44"W	53.21
C2	90°00'00"	20.00'	31.42'	N50°35'52"W	28.28
C3	7°10'31"	280.00'	35.06'	S04°22'46"E	35.04
C4	11°21'25"	280.00'	55.50'	S43°34'50"W	55.41

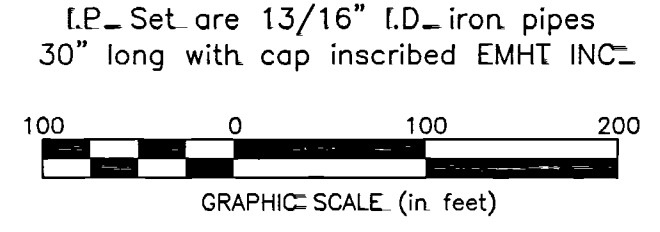
RECEIVED
 JUN 21 2019
 Franklin County Engineer
 Cornell K. Robertson, P.E., P.S.



By Matthew A. Kirk 17 June 19
 Matthew A. Kirk Date
 Professional Surveyor No. 7865

EMHT Evans, Mechwart, Hambleton & Tilton, Inc. Engineers • Surveyors • Planners • Scientists 5500 New Albany Road, Columbus, OH 43054 Phone: 614.775.4500 Toll Free: 888.775.3648 emht.com		Date= June 17, 2019
Scale= 1" = 100'		Job No= 2018-1517
Sheet= 1 of 1		
REVISIONS		
MARK	DATE	DESCRIPTION

- = STONE FND.
- = MON. FND.
- = I.P. FND.
- = I.P. SET
- = MAG. NAIL FND.
- = MAG. NAIL SET
- ▲ = R.R. SPK. FND.
- △ = R.R. SPK. SET
- = P.K. NAIL FND.



BASIS OF BEARINGS=
 The bearings shown hereon are based on the Ohio State Plane Coordinate System, South Zone, NAD83 (2011). Control for bearings was from coordinates of monuments FCGS 6645 and FCGS 6662 RESET, having a bearing of North 83° 32' 47" East between said monuments, established by the Franklin County Engineering Department, using Global Positioning System procedures and equipment.

SURVEY NOTE=
 This survey was prepared using documents of record, prior plats of survey, and observed evidence located by an actual field survey.

J:\2018\17\DMV\ASHEETS\BOUNDARY\20181517-VS-BNDY-02.DWG plotted by YOUSSEF, SHERRI on 6/17/2019 9:39:54 AM last saved by YOUSSEF on 6/17/2019 9:06:15 AM
 Xref: 20171184-VS-PAT-SEC1-PR1.DWG & 20171184-VS-PAT-SEC1-PR2.DWG & 20171184-VS-PAT-SEC1-PR3.DWG & 20171184-VS-PAT-SEC1-PR4.DWG & 20171184-VS-PAT-SEC1-PR5.DWG & 20171184-VS-PAT-SEC1-PR6.DWG & 20171184-VS-PAT-SEC1-PR7.DWG & 20171184-VS-PAT-SEC1-PR8.DWG & 20171184-VS-PAT-SEC1-PR9.DWG & 20171184-VS-PAT-SEC1-PR10.DWG & 20171184-VS-PAT-SEC1-PR11.DWG & 20171184-VS-PAT-SEC1-PR12.DWG & 20171184-VS-PAT-SEC1-PR13.DWG & 20171184-VS-PAT-SEC1-PR14.DWG & 20171184-VS-PAT-SEC1-PR15.DWG & 20171184-VS-PAT-SEC1-PR16.DWG & 20171184-VS-PAT-SEC1-PR17.DWG & 20171184-VS-PAT-SEC1-PR18.DWG & 20171184-VS-PAT-SEC1-PR19.DWG & 20171184-VS-PAT-SEC1-PR20.DWG & 20171184-VS-PAT-SEC1-PR21.DWG & 20171184-VS-PAT-SEC1-PR22.DWG & 20171184-VS-PAT-SEC1-PR23.DWG & 20171184-VS-PAT-SEC1-PR24.DWG & 20171184-VS-PAT-SEC1-PR25.DWG & 20171184-VS-PAT-SEC1-PR26.DWG & 20171184-VS-PAT-SEC1-PR27.DWG & 20171184-VS-PAT-SEC1-PR28.DWG & 20171184-VS-PAT-SEC1-PR29.DWG & 20171184-VS-PAT-SEC1-PR30.DWG & 20171184-VS-PAT-SEC1-PR31.DWG & 20171184-VS-PAT-SEC1-PR32.DWG & 20171184-VS-PAT-SEC1-PR33.DWG & 20171184-VS-PAT-SEC1-PR34.DWG & 20171184-VS-PAT-SEC1-PR35.DWG & 20171184-VS-PAT-SEC1-PR36.DWG & 20171184-VS-PAT-SEC1-PR37.DWG & 20171184-VS-PAT-SEC1-PR38.DWG & 20171184-VS-PAT-SEC1-PR39.DWG & 20171184-VS-PAT-SEC1-PR40.DWG & 20171184-VS-PAT-SEC1-PR41.DWG & 20171184-VS-PAT-SEC1-PR42.DWG & 20171184-VS-PAT-SEC1-PR43.DWG & 20171184-VS-PAT-SEC1-PR44.DWG & 20171184-VS-PAT-SEC1-PR45.DWG & 20171184-VS-PAT-SEC1-PR46.DWG & 20171184-VS-PAT-SEC1-PR47.DWG & 20171184-VS-PAT-SEC1-PR48.DWG & 20171184-VS-PAT-SEC1-PR49.DWG & 20171184-VS-PAT-SEC1-PR50.DWG & 20171184-VS-PAT-SEC1-PR51.DWG & 20171184-VS-PAT-SEC1-PR52.DWG & 20171184-VS-PAT-SEC1-PR53.DWG & 20171184-VS-PAT-SEC1-PR54.DWG & 20171184-VS-PAT-SEC1-PR55.DWG & 20171184-VS-PAT-SEC1-PR56.DWG & 20171184-VS-PAT-SEC1-PR57.DWG & 20171184-VS-PAT-SEC1-PR58.DWG & 20171184-VS-PAT-SEC1-PR59.DWG & 20171184-VS-PAT-SEC1-PR60.DWG & 20171184-VS-PAT-SEC1-PR61.DWG & 20171184-VS-PAT-SEC1-PR62.DWG & 20171184-VS-PAT-SEC1-PR63.DWG & 20171184-VS-PAT-SEC1-PR64.DWG & 20171184-VS-PAT-SEC1-PR65.DWG & 20171184-VS-PAT-SEC1-PR66.DWG & 20171184-VS-PAT-SEC1-PR67.DWG & 20171184-VS-PAT-SEC1-PR68.DWG & 20171184-VS-PAT-SEC1-PR69.DWG & 20171184-VS-PAT-SEC1-PR70.DWG & 20171184-VS-PAT-SEC1-PR71.DWG & 20171184-VS-PAT-SEC1-PR72.DWG & 20171184-VS-PAT-SEC1-PR73.DWG & 20171184-VS-PAT-SEC1-PR74.DWG & 20171184-VS-PAT-SEC1-PR75.DWG & 20171184-VS-PAT-SEC1-PR76.DWG & 20171184-VS-PAT-SEC1-PR77.DWG & 20171184-VS-PAT-SEC1-PR78.DWG & 20171184-VS-PAT-SEC1-PR79.DWG & 20171184-VS-PAT-SEC1-PR80.DWG & 20171184-VS-PAT-SEC1-PR81.DWG & 20171184-VS-PAT-SEC1-PR82.DWG & 20171184-VS-PAT-SEC1-PR83.DWG & 20171184-VS-PAT-SEC1-PR84.DWG & 20171184-VS-PAT-SEC1-PR85.DWG & 20171184-VS-PAT-SEC1-PR86.DWG & 20171184-VS-PAT-SEC1-PR87.DWG & 20171184-VS-PAT-SEC1-PR88.DWG & 20171184-VS-PAT-SEC1-PR89.DWG & 20171184-VS-PAT-SEC1-PR90.DWG & 20171184-VS-PAT-SEC1-PR91.DWG & 20171184-VS-PAT-SEC1-PR92.DWG & 20171184-VS-PAT-SEC1-PR93.DWG & 20171184-VS-PAT-SEC1-PR94.DWG & 20171184-VS-PAT-SEC1-PR95.DWG & 20171184-VS-PAT-SEC1-PR96.DWG & 20171184-VS-PAT-SEC1-PR97.DWG & 20171184-VS-PAT-SEC1-PR98.DWG & 20171184-VS-PAT-SEC1-PR99.DWG & 20171184-VS-PAT-SEC1-PR100.DWG