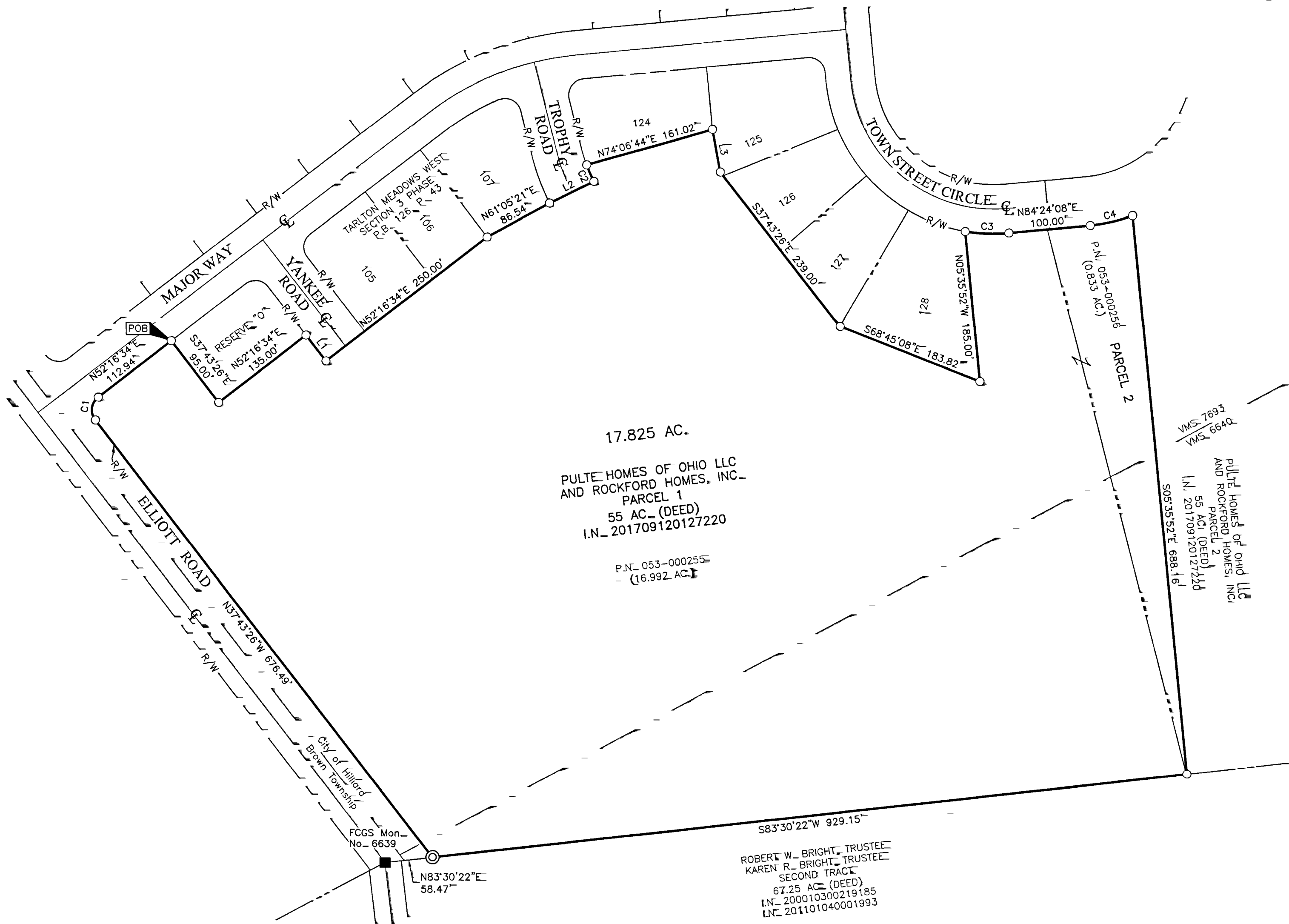


# SURVEY OF ACREAGE PARCEL

VIRGINIA MILITARY SURVEY NUMBERS 7693 AND 6640

CITY OF HILLIARD, COUNTY OF FRANKLIN, STATE OF OHIO



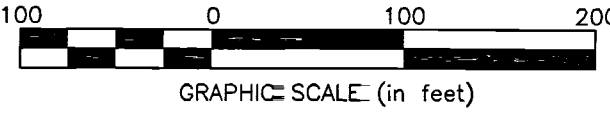
**RECEIVED**  
 JUN 21 2019  
 Franklin County Engineer  
 Cornell K. Robertson, P.E., P.S.

LINE TABLE		
LINE	BEARING	DISTANCE
L1	S37°43'26"E	40.00'
L2	N63°40'29"E	60.00'
L3	S10°36'23"E	53.25'

CURVE TABLE					
CURVE	DELTA	RADIUS	ARC	CH. BEARING	CH. DIST.
C1	90°00'00"	20.00'	31.42'	N07°16'34"E	28.28'
C2	5°46'19"	220.00'	22.16'	N23°26'22"W	22.15'
C3	15°03'12"	205.00'	53.86'	S88°04'16"E	53.70'
C4	14°54'48"	205.00'	53.36'	N76°56'44"E	53.21'

- = STONE FND.
- = MON. FND.
- = I.P. FND.
- = I.P. SET
- = MAG. NAIL FND.
- = MAG. NAIL SET
- ▲ = R.R. SPK. FND.
- △ = R.R. SPK. SET
- = P.K. NAIL FND.
- = PERM. MRKR. SET

I.P. Set are 13/16" I.D. iron pipes 30" long with cap stamped EMHT INC. Permanent Markers set are one-inch solid iron pins with aluminum cap stamped EMHT INC.



**BASIS OF BEARINGS=**  
 The bearings shown hereon are based on the Ohio State Plane Coordinate System, South Zone, NAD83 (2011). Control for bearings was from coordinates of monuments FCGS 6645 and FCGS 6662 RESET, having a bearing of North 83° 32' 47" East between said monuments, established by the Franklin County Engineering Department, using Global Positioning System procedures and equipment.

**SURVEY NOTE=**  
 This survey was prepared using documents of record, prior plats of survey, and observed evidence located by an actual field survey.



By Matthew A. Kirk 17 June 19  
 Matthew A. Kirk Date  
 Professional Surveyor No. 7865

Evans, Mechwart, Hambleton & Tillon, Inc. Engineers • Surveyors • Planners • Scientists 5500 New Albany Road, Columbus, OH 43054 Phone: 614.775.4500 Toll Free: 888.775.3648 emht.com	Date= June 17, 2019	
	Scale= 1" = 100'	
	Job No= 2018-1517	
	Sheet= 1 of 1	
REVISIONS		
MARK	DATE	DESCRIPTION