

WATERFORD DRIVE
 N8°48'22"W 30.00'

BERTHA L. KARRER
 1.75 Ac.
 DB 3662, PG 139

LOWER STREET
 A.K.A. RIVERVIEW ST.
 EASEMENT
 L Ex R/W
 194.49'
 175'
 175'
 N9°40'02"W 32.00'

THOMAS A. McDOWELL
 0.125 Ac
 PG 615
 25' DB 2954,
 N80°22'38"E 123.30'

VACATED PORTION
 OF LOWER STREET
 CITY OF DUBLIN
 ORDINANCE 39-81

514°17'13"E
 27.90'



WEST EDGE OF WATER
 (4/09/90)

SHORT STREET (32')
 N80°22'38"E 432.24'

HIGH STREET (66')

THOMAS A. McDOWELL
 6.52 Ac. (DEED)
 6.483 Ac. (SURVEY)
 D.B. 2385 PG. 97
 D.B. 2395 PG. 672

510°34'47"W
 25.69'

SCIOTO RIVER

SURVEY OF 6.483 Ac. TRACT
 VIRGINIA MILITARY SURVEY No. 2542
 CITY OF DUBLIN, FRANKLIN COUNTY,
 OHIO

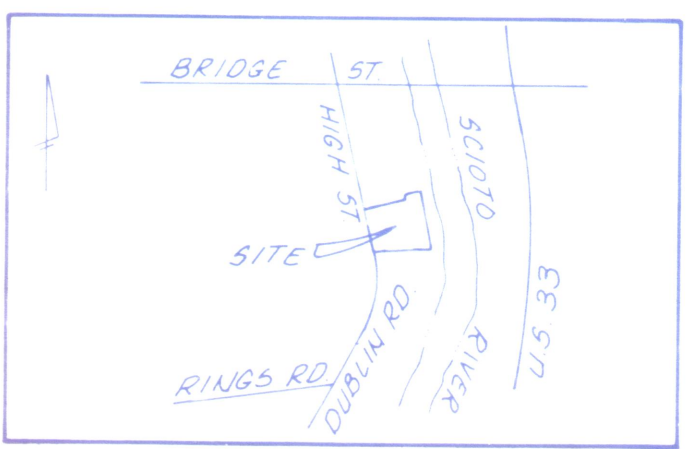
SCALE 1" = 50' MAY, 1990

WOOLPERT CONSULTANTS
 J. T. Hawk
 JACOB T. HAWK
 OHIO REGISTERED SURVEYOR No. 7038



N83°29'30"W 578.95'

CITY OF COLUMBUS,
 OHIO
 17.44 Ac
 DB 314, PG 628



DUBLIN ROAD

VILLAGE OF DUBLIN
 0.522 Ac. 424
 PG. 424
 D.B. 3406

Ex R/W

Ex R/W

33'

417.80'

Spike (Bar)

Ex R/W

N8°48'22"W 30.00'

214.87'

Ex R/W

N8°48'22"W

16'

16'

33'

1 1/2" I.P. (Fd)

3/4" I.P. (Fd)

40'

103.07'

58.46'

59°04'15"E

510°33'00"E

74.00'

91.03'

159°02'07"E

119.72'

59°21'22"E

114.63'

512°14'28"E

91.03'

512°14'28"E

114.63'

510°34'47"W

25.69'

57°52'02"E

101.03'

59°04'15"E

58.46'

510°33'00"E

74.00'

91.03'

159°02'07"E

119.72'

59°21'22"E

114.63'

512°14'28"E

114.63'

510°34'47"W

25.69'

57°52'02"E

101.03'

59°04'15"E

58.46'

510°33'00"E

74.00'

91.03'

159°02'07"E

119.72'

59°21'22"E

114.63'

512°14'28"E

114.63'

510°34'47"W

25.69'

57°52'02"E

101.03'

59°04'15"E

58.46'

510°33'00"E

74.00'

91.03'

159°02'07"E

119.72'

59°21'22"E

114.63'

512°14'28"E

114.63'

510°34'47"W

25.69'

57°52'02"E

101.03'

59°04'15"E

58.46'

510°33'00"E

74.00'

91.03'

159°02'07"E

119.72'

59°21'22"E

114.63'

512°14'28"E

114.63'

510°34'47"W

25.69'

57°52'02"E

101.03'

59°04'15"E

58.46'

510°33'00"E

74.00'

91.03'

159°02'07"E

119.72'

59°21'22"E

114.63'

512°14'28"E

114.63'

510°34'47"W

25.69'

57°52'02"E

101.03'

59°04'15"E

58.46'

510°33'00"E

74.00'

91.03'

159°02'07"E

119.72'

59°21'22"E

114.63'

512°14'28"E

114.63'

510°34'47"W

25.69'

57°52'02"E

101.03'

59°04'15"E

58.46'

510°33'00"E

74.00'

91.03'

159°02'07"E

119.72'

59°21'22"E

114.63'

512°14'28"E

114.63'

510°34'47"W

25.69'

57°52'02"E

101.03'

59°04'15"E

58.46'

510°33'00"E

74.00'

91.03'

159°02'07"E

119.72'

59°21'22"E

114.63'

512°14'28"E

114.63'

510°34'47"W

25.69'

57°52'02"E

101.03'

59°04'15"E

58.46'

510°33'00"E

74.00'

91.03'

159°02'07"E

119.72'

59°21'22"E

114.63'

512°14'28"E

114.63'

510°34'47"W

25.69'

57°52'02"E

101.03'

59°04'15"E

58.46'

510°33'00"E

74.00'

91.03'

159°02'07"E

119.72'

59°21'22"E

114.63'

512°14'28"E

114.63'

510°34'47"W

25.69'

57°52'02"E

101.03'

59°04'15"E

58.46'

510°33'00"E

74.00'

91.03'

159°02'07"E

119.72'

59°21'22"E

114.63'

512°14'28"E

114.63'

510°34'47"W

25.69'

57°52'02"E

101.03'

59°04'15"E

58.46'

510°33'00"E

74.00'

91.03'

159°02'07"E

119.72'

59°21'22"E

114.63'

512°14'28"E

114.63'

510°34'47"W

25.69'

57°52'02"E

101.03'

59°04'15"E

58.46'

510°33'00"E

74.00'

91.03'

159°02'07"E

119.72'

59°21'22"E

114.63'

512°14'28"E

114.63'

510°34'47"W

25.69'

57°52'02"E

101.03'

59°04'15"E

58.46'

510°33'00"E

74.00'