

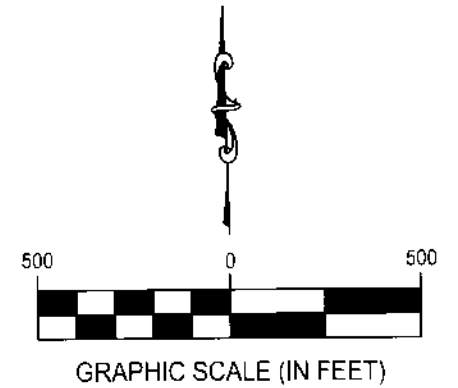
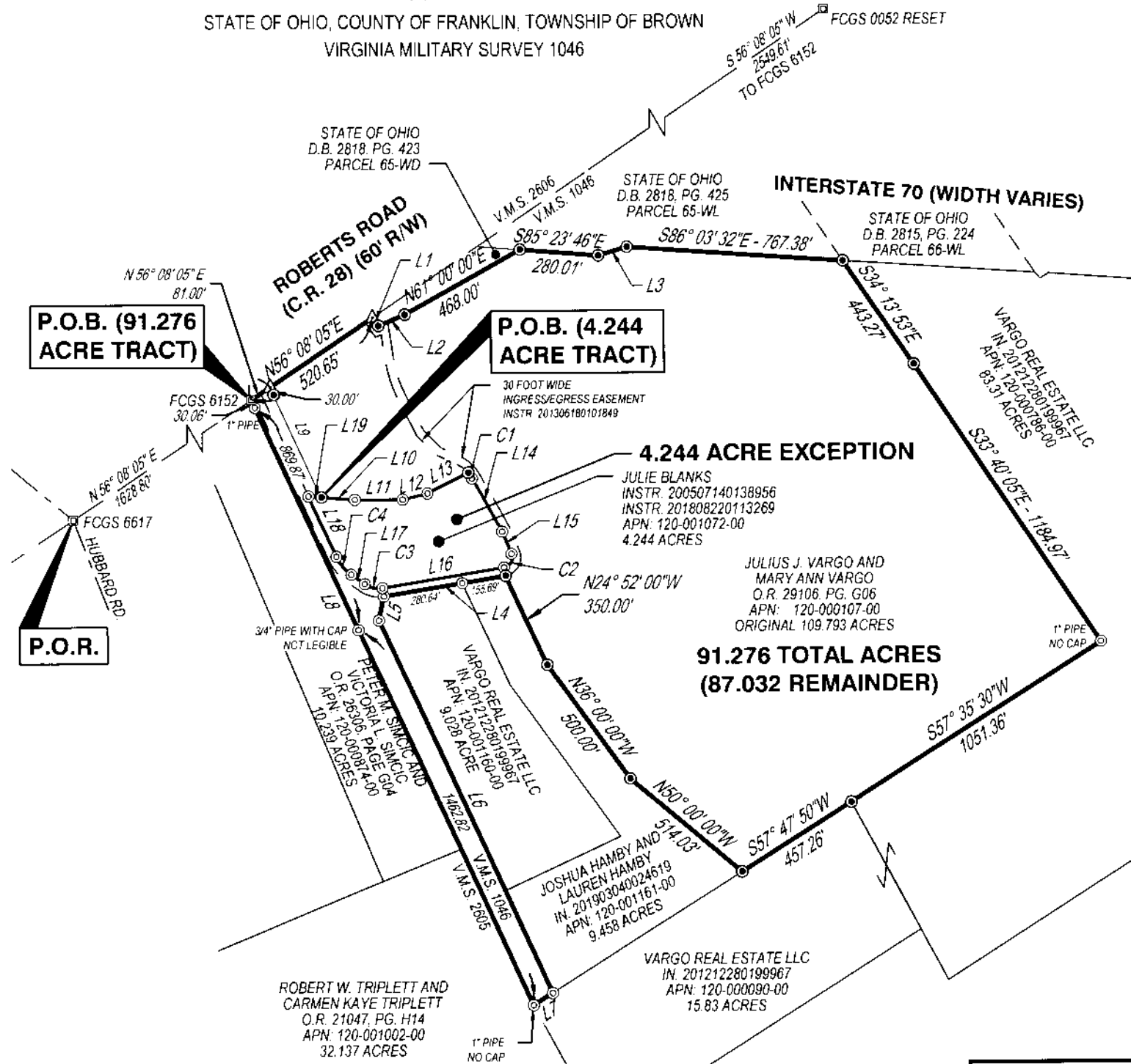
**SURVEY OF ACREAGE PARCEL
87.032 ACRES**

STATE OF OHIO, COUNTY OF FRANKLIN, TOWNSHIP OF BROWN
VIRGINIA MILITARY SURVEY 1046

Line Table			Line Table		
Line #	Bearing	Distance	Line #	Bearing	Distance
L1	S33° 51' 52"E	35.00'	L5	S11° 42' 26"W	87.79'
L2	N67° 26' 44"E	101.98'	L6	S24° 52' 00"E	1452.75'
L3	N73° 38' 12"E	106.63'	L7	S57° 47' 50"W	80.66'
L4	S80° 36' 30"W	436.33'	L8	N24° 52' 00"W	2362.76'

Line Table			Line Table		
Line #	Bearing	Distance	Line #	Bearing	Distance
L9	S24° 52' 00"E	429.81'	L15	S22° 52' 46"E	85.28'
L10	S85° 30' 00"E	118.63'	L16	S80° 36' 30"W	436.29'
L11	N89° 55' 16"E	170.08'	L17	N54° 43' 27"W	58.16'
L12	N76° 16' 00"E	90.00'	L18	N24° 43' 06"W	235.70'
L13	N63° 23' 00"E	161.96'	L19	S85° 30' 00"E	45.77'
L14	S29° 09' 24"E	216.74'			

Curve table				
Curve	Radius	Arc Length	Chord	Delta Angle
C1	120.00'	24.40'	S34° 58' 55"E - 24.36'	11° 39' 01"
C2	35.00'	63.22'	S28° 51' 51"W - 54.97'	103° 29' 15"
C3	85.00'	66.27'	N77° 03' 28"W - 64.60'	44° 40' 04"
C4	160.00'	83.79'	N39° 43' 17"W - 82.84'	30° 00' 21"



RECEIVED
MAY 15 2019
Franklin County Recorder
Cynthia R. Roberts, P.L.P.S.

BASIS OF BEARING:
THE BEARINGS SHOWN ON THIS SURVEY ARE BASED ON A BEARING OF N56°08'05" E FOR THE CENTERLINE OF ROBERTS ROAD AS DETERMINED BY GPS OBSERVATION, BASED ON NAD 83 (2011), OHIO STATE PLANE SOUTH ZONE AND POST PROCESSED USING AN OPUS SOLUTION.



Jeffrey A. Miller 5-15-19
JEFFREY A. MILLER, OHIO PS NO 7211
jeff.miller@cesoinc.com

SURVEY OF ACREAGE PARCEL	
JULIUS J. VARGO AND MARY ANN VARGO	
V.M.S. 1046	
BROWN TOWNSHIP	FRANKLIN COUNTY, OHIO
SCALE: 1" = 500'	DATE: MAY 2019
DESIGN:	JOB NO.: 755689
DRAWN: JEK	SHEET NO.: 1 OF 1
CHECKED: JAM	

