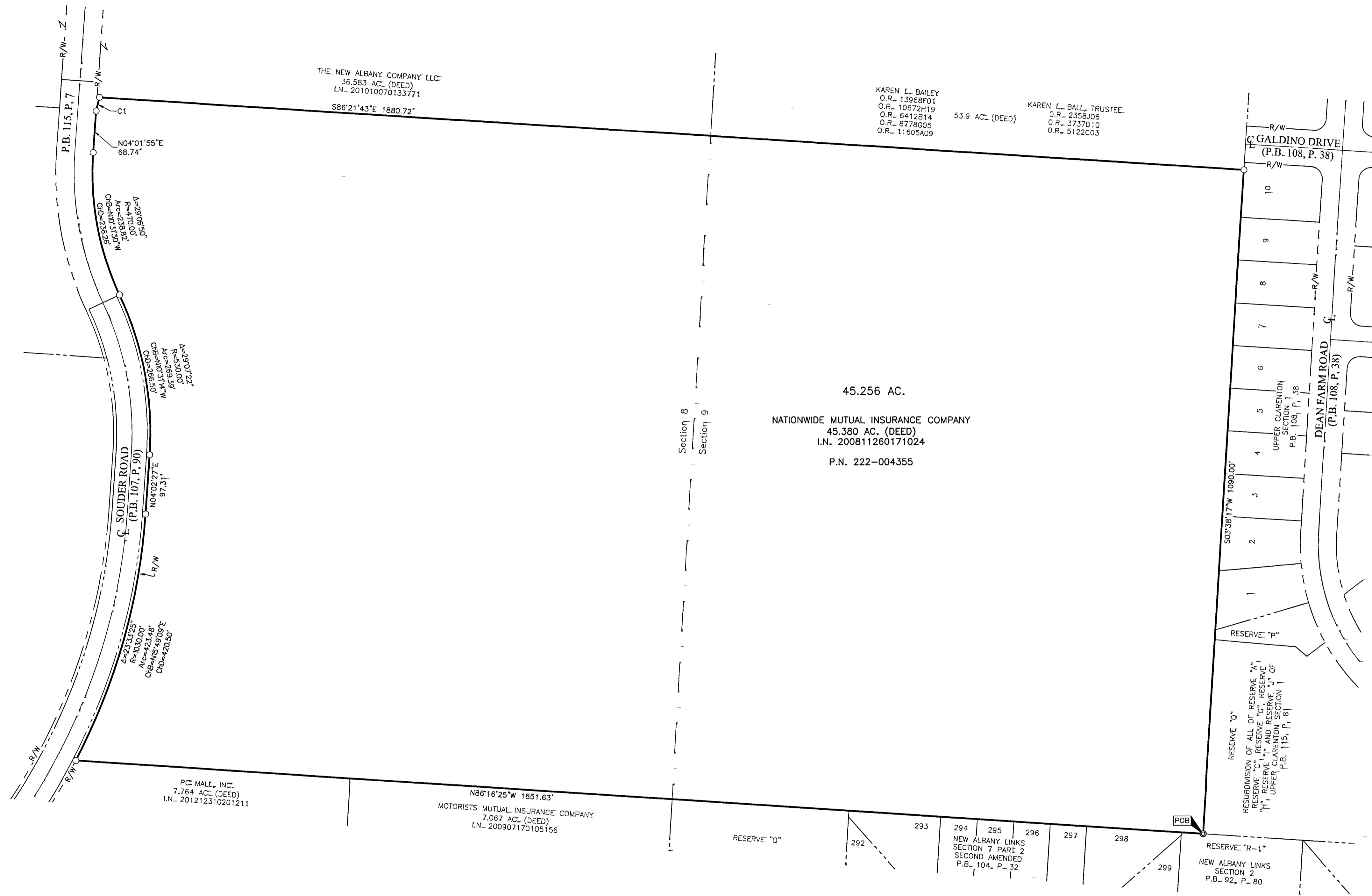


# SURVEY OF ACREAGE PARCEL

## SECTIONS 8 AND 9, QUARTER TOWNSHIP 1, TOWNSHIP 2, RANGE 16

### UNITED STATES MILITARY LANDS

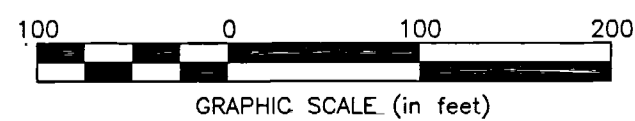
### CITY OF NEW ALBANY, COUNTY OF FRANKLIN, STATE OF OHIO



**RECEIVED**  
MAY 06 2019  
Franklin County Engineer  
Cunliff K. Kubatson, P.E., P.S.

- = STONE FND.
- = MON. FND.
- = I.P. FND.
- = I.P. SET
- = MAG. NAIL FND.
- = MAG. NAIL SET
- ▲ = R.R. SPK. FND.
- △ = R.R. SPK. SET
- = P.K. NAIL FND.
- = PERM. MRKR. SET

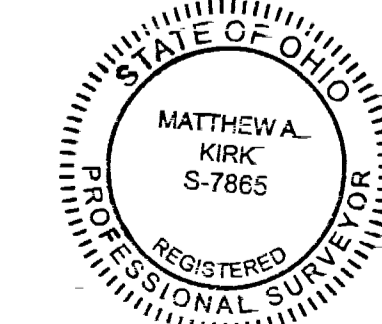
I.P. Set are 13/16" I.D. iron pipes 30" long with cap stamped EMHT INC. Permanent Markers set are one-inch solid iron pins with aluminum cap stamped EMHT INC.



**SURVEY NOTE:-**  
This survey was prepared using documents of record, prior plats of survey, and observed evidence located by an actual field survey in March 2019.

**BASIS OF BEARINGS:-**  
The bearings shown hereon are based on the Ohio State Plane Coordinate System, South Zone, NAD83 (1986 Adjustment). Control for bearings was from coordinates of monuments FRANK 80 and FRANK 180, having a bearing of North 85° 57' 24" West, as established by the Franklin County Engineering Department using Global Positioning System procedures and equipment.

| CURVE TABLE |          |         |        |             |           |
|-------------|----------|---------|--------|-------------|-----------|
| CURVE       | DELTA    | RADIUS  | ARC    | CH. BEARING | CH. DIST. |
| C1          | 2°45'58" | 475.00' | 22.93' | N13°44'08"E | 22.93'    |



By Matthew A. Kirk 3 May 19  
Matthew A. Kirk Professional Surveyor No. 7865 Date

|                   |                  |
|-------------------|------------------|
| Date: May 3, 2019 |                  |
| Scale: 1" = 100'  |                  |
| Job No: 2019-0260 |                  |
| Sheets: 1 of 1    |                  |
| REVISIONS         |                  |
| MARK              | DATE DESCRIPTION |
|                   |                  |
|                   |                  |
|                   |                  |