

J-1-C



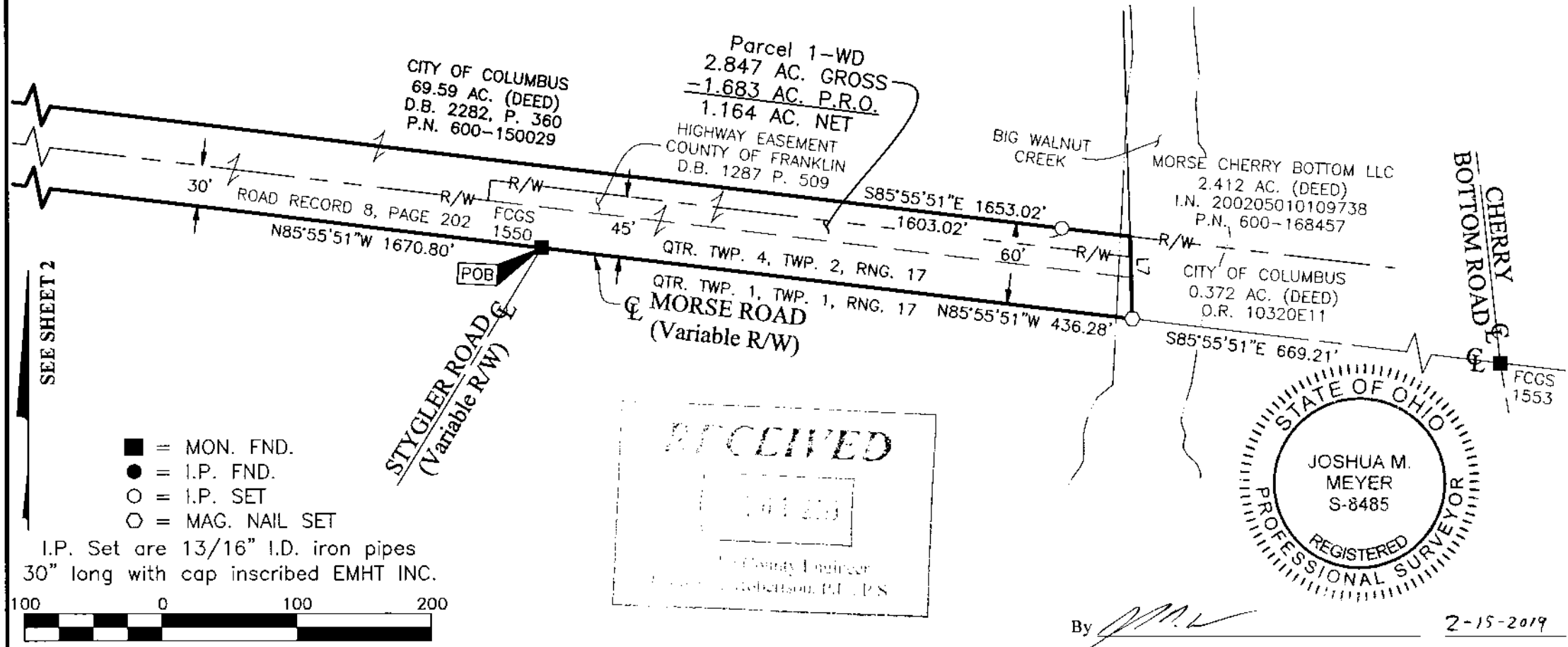
Evans, Mechwart, Hambleton & Tilton, Inc.
Engineers • Surveyors • Planners • Scientists
5500 New Albany Road, Columbus, OH 43054
Phone: 614.775.4500 Toll Free: 888.775.3648
emht.com

SURVEY OF ACREAGE PARCEL

QUARTER TOWNSHIP 4, TOWNSHIP 2, RANGE 17
UNITED STATES MILITARY LANDS
CITY OF COLUMBUS, COUNTY OF FRANKLIN, STATE OF OHIO

Date: February 15, 2019
Scale: 1" = 100'
Job No: 2018-0126

SHEET 1 OF 3

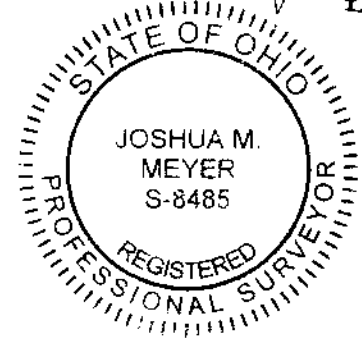


- = MON. FND.
- = I.P. FND.
- = I.P. SET
- = MAG. NAIL SET

I.P. Set are 13/16" I.D. iron pipes
30" long with cap inscribed EMHT INC.



GRAPHIC SCALE (in feet)



By *J.M.M.*
Joshua M. Meyer
Professional Surveyor No. 8485

2-15-2019
Date

J-1-C



Evans, Mechwart, Hambleton & Tilton, Inc.
Engineers • Surveyors • Planners • Scientists
5500 New Albany Road, Columbus, OH 43054
Phone: 614.775.4500 Toll Free: 888.775.3648
emht.com

SURVEY OF ACREAGE PARCEL

QUARTER TOWNSHIP 4, TOWNSHIP 2, RANGE 17

UNITED STATES MILITARY LANDS

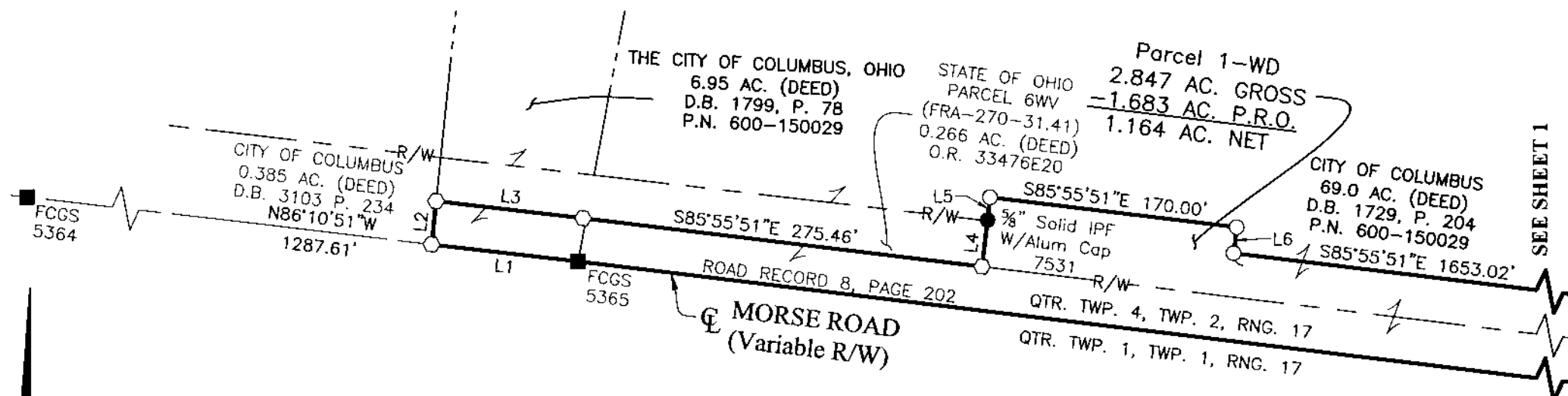
CITY OF COLUMBUS, COUNTY OF FRANKLIN, STATE OF OHIO

Date: February 15, 2019

Scale: 1" = 100'

Job No: 2018-0126

SHEET 2 OF 3

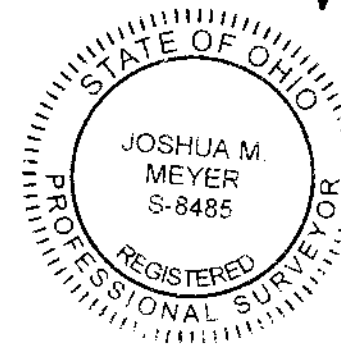
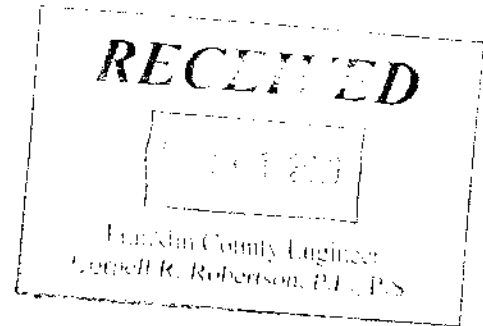


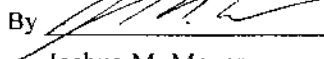
- = MON. FND.
- = I.P. FND.
- = I.P. SET
- = MAG. NAIL SET

I.P. Set are 13/16" I.D. iron pipes
30" long with cap inscribed EMHT INC.



GRAPHIC SCALE (in feet)



By 
 Joshua M. Meyer
 Professional Surveyor No. 8485

2-15-2019
 Date

J-1-C



Evans, Mechwart, Hambleton & Tilton, Inc.
Engineers • Surveyors • Planners • Scientists
5500 New Albany Road, Columbus, OH 43054
Phone: 614.775.4500 Toll Free: 888.775.3648

emht.com

SURVEY OF ACREAGE PARCEL

QUARTER TOWNSHIP 4, TOWNSHIP 2, RANGE 17

UNITED STATES MILITARY LANDS

CITY OF COLUMBUS, COUNTY OF FRANKLIN, STATE OF OHIO

Date: February 15, 2019

Scale: 1" = 100'

Job No: 2018-0126

SHEET 3 OF 3

LINE TABLE		
LINE	BEARING	DISTANCE
L1	N86°10'51"W	101.08'
L2	N03°15'07"E	30.00'
L3	S86°10'51"E	101.44'
L4	N03°43'54"E	31.75'
L5	N03°44'09"E	16.25'
L6	S04°04'09"W	18.00'
L7	S04°24'53"E	60.66'

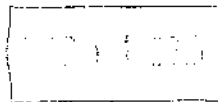
BASIS OF BEARINGS:

The Bearings shown hereon are based on the Ohio State Plane Coordinate System South Zone as per NAD83 (NSRS2007). Said bearings originated from a field traverse which was tied (referenced) to said coordinate system by GPS observations and observations of selected Franklin County Engineering Department monuments CLARKAZIMUTH and CLARK19281982. The portion of the centerline of Morse Road, having a bearing of South 86° 10' 51" East, and monumented as shown hereon, is designated the "basis of bearing" for this survey.

SURVEY NOTE:

This survey was prepared using documents of record, prior plats of survey, and observed evidence located by an actual field survey.

RECEIVED



Franklin County Engineer
Cecil R. Robertson, P.E., P.S.