



Evans, Mechwart, Hambleton & Tilton, Inc.  
 Engineers • Surveyors • Planners • Scientists  
 5500 New Albany Road, Columbus, OH 43054  
 Phone: 614.775.4500 Toll Free: 888.775.3648

emht.com

# SURVEY OF ACREAGE PARCEL

QUARTER TOWNSHIP 4, TOWNSHIP 1, RANGE 16

UNITED STATES MILITARY LANDS

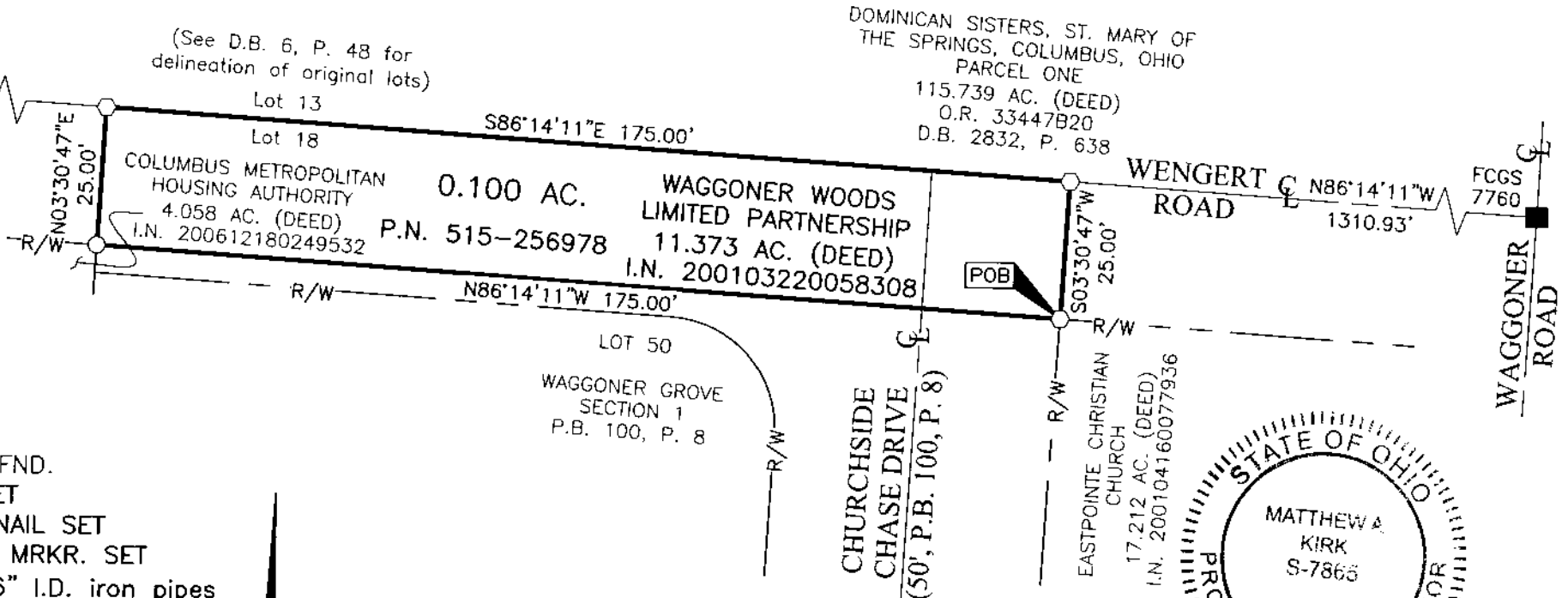
CITY OF COLUMBUS, COUNTY OF FRANKLIN, STATE OF OHIO

Date: March 20, 2019

Scale: 1" = 30'

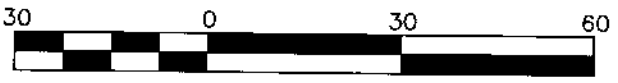
Job No: 2019-0266

**SURVEY NOTE:**  
 This survey was prepared using documents of record, prior plats of survey, and observed evidence located by an actual field survey.



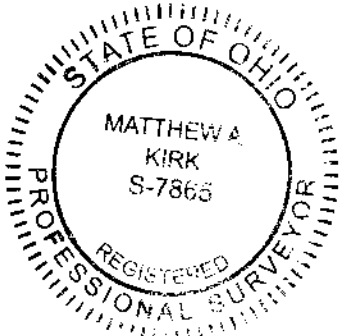
- = MON. FND.
- = I.P. SET
- = MAG. NAIL SET
- ⊙ = PERM. MRKR. SET

I.P. Set are 13/16" I.D. iron pipes 30" long with cap stamped EMHT INC.  
 Permanent Markers set are one-inch solid iron pins with aluminum cap stamped EMHT INC.



GRAPHIC SCALE (in feet)

**BASIS OF BEARINGS:**  
 The bearings shown hereon are based on the Ohio State Plane Coordinate System, South Zone, NAD83. Control for bearings was from coordinates of monuments 7760 and 7776, having a bearing of South 86° 14' 11" East between said monuments, as established by the Franklin County Engineering Department.



By Matthew A. Kirk 20 MARCH 19  
 Matthew A. Kirk Date  
 Professional Surveyor No. 7865

J:\20190266\DWG\04SHEETS\BOUNDARY\20190266-VS-BNDY-01.DWG plotted by KIRK, MATTHEW on 3/20/2019 1:23:47 PM last saved by MKIRK on 3/20/2019 1:23:36 PM  
 Xrefs: