



Evans, Mechwart, Hambleton & Tilton, Inc.  
 Engineers • Surveyors • Planners • Scientists  
 5500 New Albany Road, Columbus, OH 43054  
 Phone: 614.775.4500 Toll Free: 888.775.3648  
 emht.com

# SURVEY OF ACREAGE PARCEL

QUARTER TOWNSHIP 1 & 2, TOWNSHIP 1, RANGE 17

UNITED STATES MILITARY LANDS

CITY OF COLUMBUS, COUNTY OF FRANKLIN, STATE OF OHIO

Date: March 8, 2019

Scale: 1" = 50'

Job No: 2018-0126

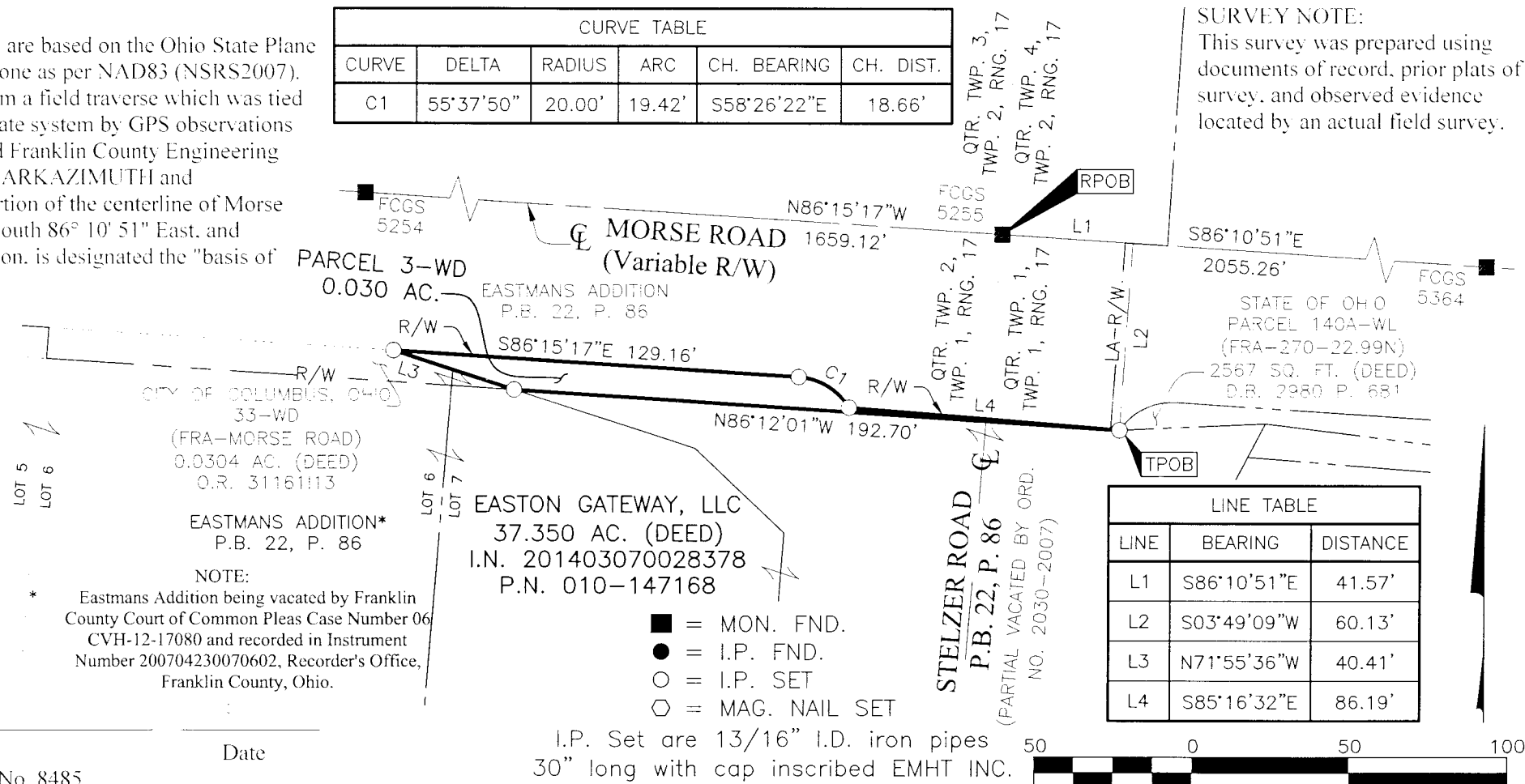
### BASIS OF BEARINGS:

The Bearings shown hereon are based on the Ohio State Plane Coordinate System South Zone as per NAD83 (NSRS2007). Said bearings originated from a field traverse which was tied (referenced) to said coordinate system by GPS observations and observations of selected Franklin County Engineering Department monuments CLARKAZIMUTH and CLARK19281982. The portion of the centerline of Morse Road, having a bearing of South 86° 10' 51" East, and monumented as shown hereon, is designated the "basis of bearing" for this survey.

CURVE TABLE					
CURVE	DELTA	RADIUS	ARC	CH. BEARING	CH. DIST.
C1	55°37'50"	20.00'	19.42'	S58°26'22"E	18.66'

### SURVEY NOTE:

This survey was prepared using documents of record, prior plats of survey, and observed evidence located by an actual field survey.



LINE TABLE		
LINE	BEARING	DISTANCE
L1	S86°10'51"E	41.57'
L2	S03°49'09"W	60.13'
L3	N71°55'36"W	40.41'
L4	S85°16'32"E	86.19'

- = MON. FND.
- = I.P. FND.
- = I.P. SET
- ◇ = MAG. NAIL SET

I.P. Set are 13/16" I.D. iron pipes 30" long with cap inscribed EMHT INC.



By Joshua M. Meyer Date \_\_\_\_\_  
 Professional Surveyor No. 8485